

Notice of Meeting:

I hereby give notice that an ordinary Meeting of the Council will be held on:

Date: Tuesday 17 September 2019
Time: 9.30am
Meeting Room: Council Chamber
Venue: Municipal Building, Garden Place, Hamilton

Richard Briggs
Chief Executive

Council OPEN LATE AGENDA

(Item 27: Hamilton Gardens Management Plan- Deliberations Report)

Membership

Chairperson	Mayor A King
Deputy Chairperson	Deputy Mayor M Gallagher
Members	Cr M Bunting
	Cr J R Casson
	Cr S Henry
	Cr D Macpherson
	Cr G Mallett
	Cr A O'Leary
	Cr R Pascoe
	Cr P Southgate
	Cr G Taylor
	Cr L Tooman
	Cr R Hamilton

Quorum: A majority of members (including vacancies)

Meeting Frequency: Monthly – or as required

Becca Brooke
Governance Lead

12 September 2019

Telephone: 07 838 6427
Becca.Brooke@hcc.govt.nz
www.hamilton.govt.nz

ITEM	TABLE OF CONTENTS	PAGE
27	Hamilton Gardens Management Plan- Deliberations Report	3
28	Resolution to Exclude the Public	28

Council Report

Item 27

Committee: Council **Date:** 17 September 2019
Author: Lee-Ann Jordan **Authoriser:** Lance Vervoort
Position: Visitor Desination Manager **Position:** General Manager Community
Report Name: Hamilton Gardens Management Plan- Deliberations Report

Report Status	<i>Open</i>
----------------------	-------------

Purpose

1. To inform the Council on further information requested at the Regulatory and Hearings Committee on 21 August 2019.
2. To seek the Council's approval of the Draft Hamilton Gardens Management Plan subject to any changes considered and endorsed by Council, as the Final Management Plan.

Staff Recommendation

3. That the Council:
 - a) approves the Hamilton Gardens Management Plan subject to the Draft being updated for necessary changes of grammatical and editorial accuracy, and the inclusion of wording to reflect the following matters;
 - i. a concept to be developed between staff Waikato Tainui and Te Haa o te whenua o Kirikiriroa (THaWK) that will appropriately recognise the history and ongoing significance of the site for iwi and hapu;
 - ii. the protection and ownership of Maatauranga Maaori is clarified and acknowledged.
 - iii. recognition of areas and features of historical significance, including sites significant to iwi and hapu, will be referenced;
 - iv. the integration of appropriate levels of lighting, security cameras and other Crime Prevention by Environmental Design strategies within designs;
 - v. the strong consideration of accessibility needs for people with disabilities;
 - vi. the inclusion of a potential cultural hub within the Hamilton Gardens site in partnership with iwi and hapu;
 - b) delegates authority to the General Manager, Community, to execute the requested changes to the Draft Hamilton Gardens Management Plan as outlined in resolution a), and finalise the document on behalf of the Council;
 - c) notes that staff will work in partnership with Waikato Tainui and Te Haa o Te Whenua o Kirikiriroa to develop and deliver the projects and activities included in the Hamilton Gardens Management Plan that affect iwi and mana whenua; and
 - d) requests the Chief Executive prepare a report on Crown and Raupatu land in Council ownership and control for discussion by the Council by March 2020.

Executive Summary

4. On 19 February 2019 the Community, Services and Environment Committee approved the Draft Hamilton Gardens Management Plan 2019 (the Draft Plan) for public consultation. The consultation period was open from 8 April to 9 June 2019.
5. During a Regulatory and Hearings Committee meeting on 21 August 2019, the Committee Members requested further information which are addressed in the table below.
6. Having been through a consultation and hearings process, staff recommend that the Council approves the Draft Plan, subject to amendments recommended by staff and agreed to by the Council.
7. Because this is part of a statutory process, staff consider the matters in this report have low significance and that the recommendations comply with the Council's legal requirements.

Background

8. The Draft Hamilton Gardens Management Plan has been prepared to meet the requirements of the Reserves Act (1977).
9. The purpose of a reserve management plan is to define the strategies, objectives and policies for the development, operation, management and public use of a reserve. Management plans provide a Link between Government Legislation, wider Council plans and policies, and influence other planning and management processes.
10. On 19 February 2019 the Community, Services and Environment Committee approved the Draft Hamilton Gardens Management Plan 2019 (the Draft Plan) for public consultation.
11. In accordance with the Reserves Act 1977, the purpose of the consultation was to help the Council understand the attitudes of the community towards the overall direction of the Draft Plan.
12. The consultation period was open from 8 April 2019 to 9 June 2019. Consultation included face to face meeting with iwi partners and key stakeholders, and open days at the Hamilton Gardens. Draft Plans were available to view online, and hard copies were available at the main Council office, Hamilton Gardens Information Centre and Hamilton City Libraries.
13. Consultation documentation addressed three key issues in the Draft Plan; the proposed garden and visitor centre developments, changes to the parking layout, and the proposal to charge an entry fee to the enclosed gardens.
14. 191 submissions were received during the consultation period.
15. An analysis of written submissions is attached as Attachment 1. The full submissions received on the plan are available to read [here](#).

Discussion

16. Seven verbal submitters were heard at the Regulatory and Hearings Committee meeting on 21 August 2019.

17. Following verbal submissions staff were asked to provide further information by Committee Members on the following issues:

Issue Raised by Committee Members	Staff Response
Iwi and Mana Whenua Issues	
The protection of IP Maatauranga Maaori/ Maaori knowledge	Protection and ownership of Maatauranga Maaori to be clarified and acknowledged in the Draft Plan.
Raupatu Land	Staff are able to prepare a report on the status of crown land and Raupatu land for future discussion. Further direction will be sought from elected members regarding this.
The provision of a space for a cultural hub	The Draft Plan to include wording that ensures provision for a cultural hub in partnership with Waikato-Tainui regarding the suitability of a site within the Hamilton Gardens.
Recognition of significant sites for iwi and mana Whenua	Staff will work in partnership with Waikato Tainui and THAWK to develop a concept that will appropriately recognise the history and ongoing significance of the site for Iwi and Hapu. The commitment to a partnership approach through an iwi/hapu engagement panel to discuss and agree to projects; and regular discussions with this panel regarding activities and events at the Gardens that represent and reflect mana whenua tikanga, kawa and lore.
Heritage	
Recognition of Heritage areas	The Draft Plan to be updated to recognise and include references to areas of historical significance, including sites significant to Maaori. The District Plan is currently being reviewed to consider the addition of archaeologically significant areas in the Gardens.
Query about the potential for the relocation of the Stationmaster's house to Frankton	The Stationmaster's house was relocated to the Hamilton Gardens in 1984 from the site of the current refuse transfer station. The Council does not currently have a suitable site for the house to be transferred to where it would benefit from its current level of maintenance and security.

Areas of influence	
Protection of visual catchment and significant sites close to the Gardens	<p>Staff will identify 'areas of influence' outside of but proximate to the Gardens where any development should be considered for sympathetic development and/or connections (physical and symbolic) to the Gardens and to Maaori history and significance. These areas would include the Paa sites along the river and the Glenview Club site.</p> <p>While outside the scope of the Management Plan, staff will undertake a holistic approach when planning land developments in proximity to the Gardens.</p>
Arts and events	
Road noise may negatively affect events held on the proposed Governor's Green	<p>Earthworks have been carried out on the proposed site and staff are undertaking noise level assessment at the Governors' Green and other sites at the Gardens.</p> <p>The Draft Plan provides spaces for a range of large and small-scale performances and events.</p> <p>A map showing event and performance spaces across the proposed sites is included as Attachment 2.</p>
Safety and accessibility	
Safety and security at the Gardens	Include wording in the Draft Plan to ensure that appropriate levels of lighting, security cameras and other CPTED strategies will be integrated into designs.
How the Draft Plan meets the needs of people with disabilities	The Gardens currently hold Bronze Access and wording in the Draft Plan will be included to recognise the requirement to consider accessibility for people with disabilities.
Cycling and use of parking areas	
The provision of cycle parking in the plan	The Draft Plan accommodates parking for all modes of transport including dedicated cycle parking.
The parking configuration proposed in plan	<p>Staff have engaged engineers to undertake an assessment of the current parking area with respect to ground stability.</p> <p>A list options for alternate locations (including an analysis of those options) is included as Attachment 3 and 4.</p>

18. The Draft Plan has not been updated pending confirmation by Elected Members about the proposed changes sought.

Proposed changes to the Draft Plan

19. Changes proposed by staff are as follows:
- Proposed changes outlined in the table above
 - Changes on matters of fact and accuracy- e.g. changes to the date that the Stationmaster's House was built.
 - Minor editorial changes (changes to spelling, grammar etc)
 - Changes to wording to recognise the significance of the Gardens to local Maaori and Council's partnership with Waikato Tainui and THaWK
20. The Plan will be updated by the General Manager, Community, in accordance with Council's Delegations Policy.
21. If the recommendation is not approved at this time the Draft Hamilton Gardens Reserve Management Plan 2019 remains as a draft and the existing Operative Management Plan (2014) will remain in force.
22. If the Draft Plan is not adopted at a further time the proposed developments in the plan will not be able to progress.

Options

23. No other options are available for Council to consider as the Council will choose to adopt or not adopt the Plan.

Legal and Policy Considerations

24. Staff confirm that the staff recommendation complies with the Council's legal and policy requirements in accordance with the Reserves Act 1977.
25. There are no legal risks or implications if the Council chooses to adopt or not adopt the Draft Plan.

Financial considerations

26. The Draft Plan does not bind the Council to on-going funding. It provides direction for the operational management and future long-term planning processes for the Hamilton Gardens. Any significant projects or developments associated with the Management Plan will be subject to approval through the Long-Term Plan.
27. The costs of developing the plan (including staff time) was \$28,000 which includes \$12,700 for printing, displays etc, and \$15,000 of staff time.

Wellbeing Considerations

28. The purpose of Local Government changed on the 14 May 2019 to include promotion of the social, economic, environmental and cultural wellbeing of communities in the present and for the future ('the 4 wellbeings').
29. The subject matter of this report has been evaluated in terms of the 4 wellbeings during the process of developing this report as outlined below.
30. The recommendations set out in this report are consistent with that purpose.

Social

31. Hamilton Gardens contribute to the social wellbeing of Hamiltonians through providing a destination open space and visitor attraction. The Gardens are a place for communities to meet, and the themed gardens and children's playgrounds provide unique experiences for social interactions. Hamilton Gardens in a space that is inclusive to those with disabilities, and also provides an age friendly experience. The Draft Management Plan ensures that these social benefits are protected and enhanced, and Hamilton Gardens continues to be a premier location for social interaction in the city.

Economic

32. Hamilton Gardens is already acknowledged as a high quality and internationally recognised visitor destination. This provides clear economic benefits to the Hamilton community, as visitors are welcomed from around the world. The Management Plan looks to further enhance these economic impacts, by increasing the number of themed gardens and encouraging visitors to extend their visit. This is expected to have additional benefits to the hospitality industry and accommodation providers throughout the city.

Environmental

33. Hamilton Gardens is an important location for promoting environmental issues in the Waikato. Its location next to the Waikato River means that water quality issues within the river are key to visitor experiences. The Gardens are also home to a diverse range of plant and animal life and ensuring the ongoing health of these natural areas is an important component of the management plan.
34. Section 5.4 of the Draft Management Plan outlines the Hamilton Gardens' commitment to environmental sustainability, e.g., the Gardens are preparing to become carbon neutral by 2030.

Cultural

35. Hamilton Gardens is located on a significant site for local Maaori. Originally a Paa site, Hamilton Gardens also interacts closely with the Waikato River and Waikato-Tainui have a particular interest in ensuring the site reflects the values of local iwi. The Te Parapara Garden, Matariki celebrations and kumara planting are examples of activities that are currently undertaken at the Gardens.
36. The Management Plan has been discussed with Waikato-Tainui and THAWK, and ongoing discussions with Mana Whenua will be critical as projects are undertaken. Mana Whenua have been clear in their desire to see that the space reflects its full history and significance, so all visitors understand its importance and value, and that Hamilton Gardens is truly seen as a bi-cultural space.
37. Staff, Waikato Tainui and THaWK have committed to a partnership approach to these matters and will meet regularly to discuss and mutually agree on developments.
38. The Gardens are home to an array of arts and cultural activities. The annual Arts Festival in February and March will continue to be a critical part of promoting the Gardens to the public and visitors, and its role as the site of Citizenship ceremonies is expected to continue.

Risks

39. Given the high level of public support for the Gardens in general, there may be political risk in the case that the plan is not adopted.

40. Given the level of detail around proposed developments in the Draft Plan, the public may expect that all the projects are delivered as described in the Draft Plan, however all developments will be subject to detailed designs and costings.

Significance & Engagement Policy

Significance

41. Given the statutory requirement to consult, staff have not considered the key considerations under the Significance and Engagement Policy to assess the significance of the matter(s) in this report.

Engagement

42. Community views and preferences are already known to the Council through the submission process as described above.

Attachments

Attachment 1 - Draft Hamilton Gardens Management Plan- Summary of Submissions

Attachment 2 - Proposed Events or Performance Spaces at the Hamilton Gardens

Attachment 3 - Options analysis for car parking configurations 2

Attachment 4 - Options for parking configurations- Hamilton Gardens

Draft Hamilton Gardens Management Plan – Summary of Submissions

Introduction

This report provides a summary of the main themes and findings from the submissions received through public consultation on the Draft Hamilton Gardens Management Plan (Draft Plan).

Objectives of the consultation

In accordance with the Reserves Act 1977, The purpose of the consultation was to help the Council understand the attitudes of the community towards the overall direction of the Draft Plan before the Council considers its adoption.

Consultation documentation addressed three key issues in the Draft Plan: the proposed garden developments; changes to the parking layout; and the proposal to charge an entry fee to the enclosed gardens.

The submission form had four open ended questions which asked submitters:

1. What they thought about the long-term developments proposed in the Draft Plan (developing the site with new gardens and the arrival area and information centre).
2. Whether or not they supported the redevelopment of the carpark and Rhododendron Lawn as proposed in the Draft Plan.
3. Whether or not they supported the option to charge entry to the enclosed gardens for non-Hamilton residents.
4. Whether they had any other comments.

Consultation

The consultation period was from 8 April to 9 June 2019. Consultation included meetings with iwi partners and key stakeholders, and open days at the Hamilton Gardens. Draft Plans were available to view online, and hard copies were available at the main Council office, Hamilton Gardens Information Centre and Hamilton City Libraries.

During the consultation period the Council received a total of total of 191 submissions, including:

- 176 from individuals
- 15 organisations/groups.

Of these submitters staff were able to validate that 130 live in Hamilton.

The organisations/groups who provided submissions were:

- Te Whakakitenga o Waikato (Waikato-Tainui)
- The Friends of Hamilton Gardens
- The Hamilton Gardens Development Trust
- Ministry of Style limited (Hamilton gardens Café)
- Waibury Farms
- Tainui Waka Tourism Inc.
- Waikato Wedding Expo
- Hamilton & Waikato Tourism
- Community Development Trust
- Waikato Heritage Group
- Garden History Research Foundation
- Hamilton Gardens Arts Festival
- Northern Daffodil Club Inc
- The Waikato River Explorer
- Bike Waikato

Approach to analysis

Quantitative analysis of responses to the main questions in the consultation document was undertaken. Themes that emerged through the consultation have also been grouped and summarised. Issues raised through open comments have been summarised on page 8.

Executive Summary

Key conclusions from the consultation were that:

- The majority of submitters (72%) supported the direction of the Draft Plan, including the proposed new developments. 12% partially supported the direction of the Draft Plan, and 9% of submitters did not support the direction of the Draft Plan.
- A small majority of submitters (66%) supported the redevelopment of the carpark and Rhododendron Lawn as proposed in the Draft Plan and 21% disagreed. Eleven percent did not answer the question. 2% partially agreed.
- There was strong support from submitters to implement some kind of entry fee to the enclosed section of the gardens (75%) but no clear consensus about who should pay and how much should be charged.
- 47% of total submitters (Hamilton residents and Non-Hamilton residents) agreed there should be paid entry for non-Hamilton residents. 28% of submitters who were grouped as “other” supported charging an entry fee in principle but suggested alternatives; only

charging overseas tourists, giving concessions to Waikato people who live outside of Hamilton, or not charging the friends or family members of Hamilton residents.

- 20% of submitters disagreed with charging an entry fee and 5% didn't answer the question.

Submission Analysis

Waikato Tainui

The submission from Te Whakakitenga o Waikato (Waikato-Tainui) outlines in detail their position in relation to the development of the Draft Management Plan.

Key issues raised in their submission included:

- Questions about what steps had been taken to acknowledge and ensure the ongoing protection of a number of historic Maaori sites within the Hamilton Gardens
- the opportunity for the development of indigenous flora and fauna species
- the consideration of a joined-up approach to the development of the draft-plan that recognises mana whenua historical context
- Waikato Tainui's support for the development of a cultural hub on the Hamilton gardens site

Other Stakeholder groups

The submission from the **Friends of Hamilton Gardens** highlighted their support for the proposed developments in the Draft Plan, however they do not support charging entry until further investigations have been undertaken.

The Hamilton Gardens Development Trust fully supported all aspects of the Draft Plan

The Tainui Waka Tourism Ltd detailed a number of requests in their submission including:

- that Maaori cultural interests and viewpoints are taken into consideration with respect to the future development of the site, in particular the proposal to develop the HAKA event into a permanent cultural attraction
- Noted that beaches and low-lying areas around the Hamilton Gardens were important historical waka landing sites and proposed that riverbank areas be protected and enhanced as taunga waka (traditional waka landing sites)
- Asked for greater provision for Maaori cultural installations to be integrated throughout the Hamilton Gardens site to better reflect and acknowledge the pre-Hamilton Gardens story of this area and to provide added value for visitors to the Hamilton Gardens through the development of cultural tourism.

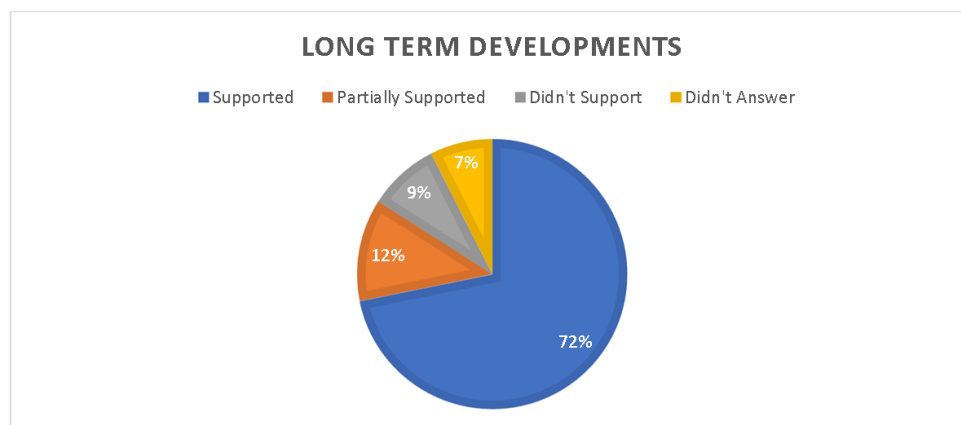
In addition to proposed developments the submission from **Hamilton and Waikato Tourism** supports the development of visitor event infrastructure, the inclusion of a space for the HAKA cultural attraction within the Gardens' site, an enhanced arrival area and improved access, and the importance of value-add experiences.

Question 1: Long-Term Developments

Submitters were asked what they thought about the long-term developments proposed in the Draft Plan - to develop the site with new gardens and the arrival area and information centre.

One hundred and thirty-five submitters (72%) supported the proposal, and twenty-three submitters (12%) partially supported the proposal. Sixteen submitters did not support the proposal.

Figure 1



Long Term Developments	Number
Supported	135
Partially Supported	23
Didn't Support	16
Didn't answer question	14

Comments about supporting, partially supporting or not supporting the plan included the need to preserve open spaces, concern about the number of new gardens, and whether maintenance on the current gardens will suffer as a result of the proposed developments. Comments by theme is shown below in table 1.

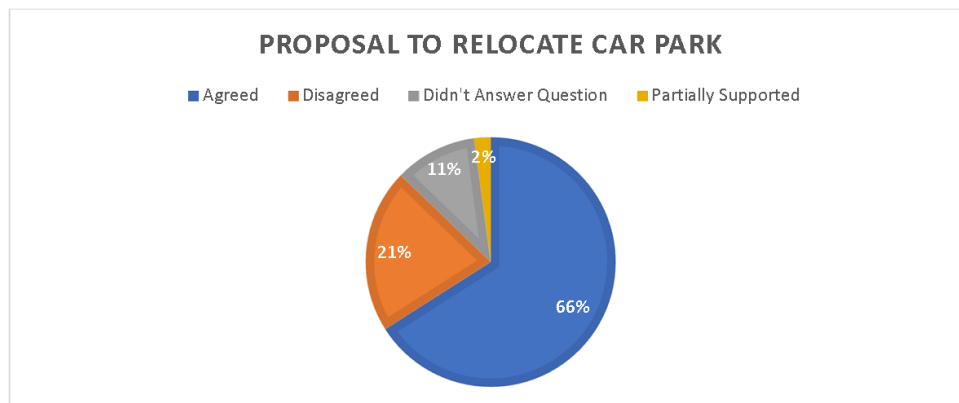
Table 1

Summary of Comments	Number
General support	127
Access to gardens should be improved	5
There should be limits to the amount of development/number of gardens	7
Maintenance on current gardens should not be overlooked	3
There should be greater levels of activation (i.e. events, commercial operations) in the gardens	3
Other facilities/tourist destinations in Hamilton could be developed	3
Concern with losing open space to developments	4

Question 2. Redevelopment of Carparks/Rhododendron Lawn

The majority of submitters supported the redevelopment of the carpark and Rhododendron Lawn as proposed in the Draft Plan. Figure 2 shows that one hundred and twenty-four submitters (66%) supported the redevelopment and forty (21%) disagreed. Twenty submitters did not answer the question.

Figure 2



Proposal to Relocate Carpark	Number
Agreed	124
Disagreed	40
Didn't Answer Question	20
Partially Supported	4

Comments by submitters are summarised in table 2 (below).

Table 2

Summary of comments	Number
It is a functional decision/it makes sense/ it's a good idea	63
Acceptable/OK/understand	14
Developments would improve traffic circulation, centralise parking	16
The Ghost Gum should be protected	8
The proposed developments would be a better use of space by the river	6
Governor's Green will be noisy	6
Disability access should be considered	5

Question 3. Paid Entry

Overall there was strong support for some kind of paid entry to the enclosed section of the gardens; figure 2 shows that 88 (47%) of total submitters (Hamilton residents and Non-Hamilton residents) agreed there should be paid entry for non-Hamilton residents and 38 (20%) disagreed. Fifty-two

submitters (28%) supported charging an entry fee in principle but suggested alternatives, such as only charging overseas tourists, giving concessions to Waikato people who live outside of Hamilton, or not charging the friends or family members of Hamilton residents. One submitter highlighted the need for a detailed investigation to be undertaken to determine costs and benefits to charging entry.

Figure 3

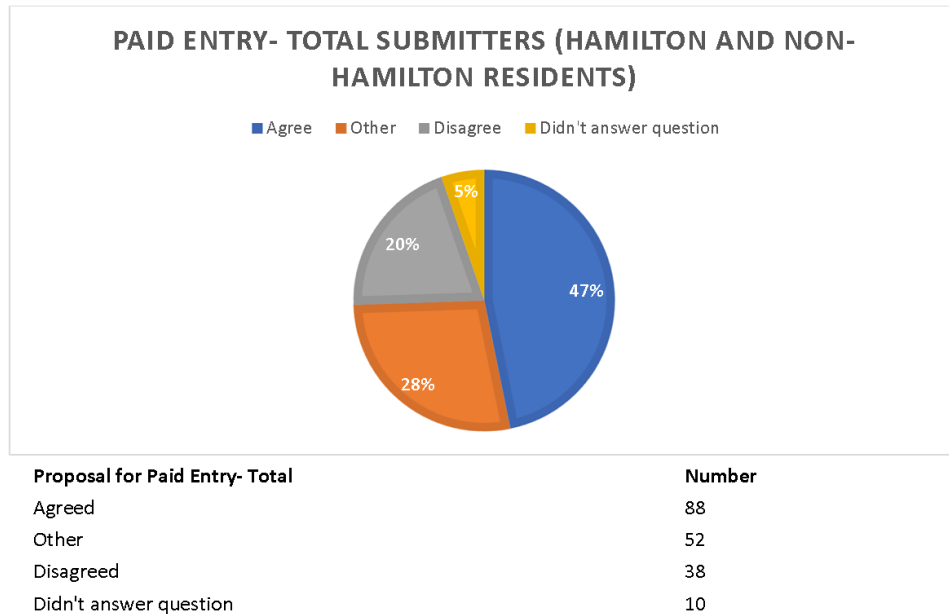


Table 2 shows comments that submitters made regarding paid entry. Twenty-six submitters commented that international tourists should have to pay even if New Zealanders don't, 23 submitters commented that an entry fee should not be so high to be prohibitive.

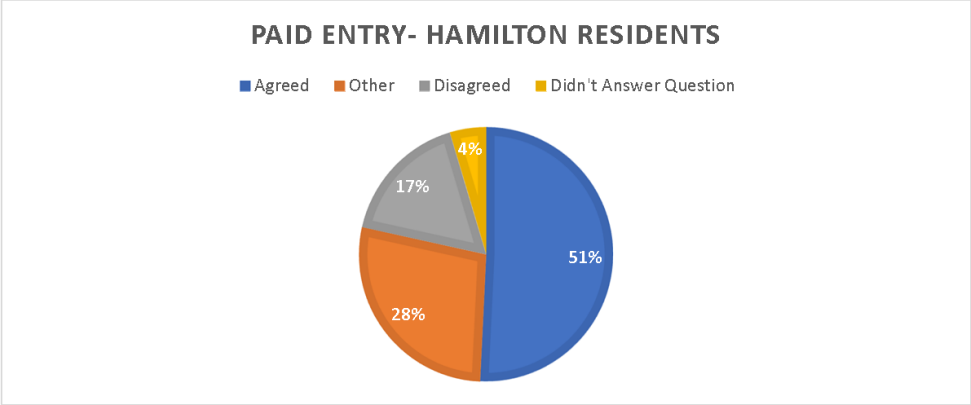
Table 3

Summary of comments	Number of submitters
International tourists/buses etc should pay	26
Entry fees should be low/not prohibitively expensive	23
An entry fee will help fund development and maintenance	15
An entry fee would be fair to Hamilton ratepayers	11
The gardens are worth it/comparisons with other paid entry gardens	11
Charging an entry fee may be bad for tourism	4
Revenue should be generated through activities- not an entry fee	5
An entry fee could help manage overcrowding	5

Figure 4 shows that Hamilton residents were slightly more supportive of the proposal to charge entry for non-Hamilton residents compared with the total group of submitters. Sixty-six (51%) submitters agreed that non-Hamilton residents should be charged entry, and twenty-two (17%)

disagreed. Thirty-six (28%) submitters agreed with charging in principle, but suggested alternatives, such as only charging international tourists.

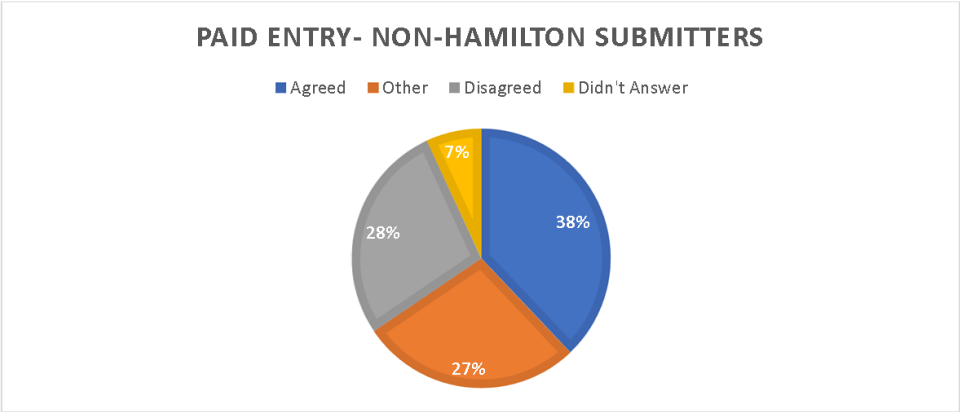
Figure 4



Proposal for Paid Entry- Hamilton Residents	Number
Agreed	66
Other	36
Disagreed	22
Didn't Answer Question	6

Non-Hamilton residents were less supportive of the proposal to charge entry to non-Hamilton residents compared with the other two groups. 38% (66) of Non-Hamilton residents agreed with the proposal, 28% (22) disagreed, and 27% (36) agreed with charging in principle but suggested alternatives.

Figure 5



Proposal for Paid Entry- Non-Hamilton Resident	Number
Agreed	22
Other	16
Disagreed	16
Didn't Answer	4

4. General Comments

One hundred and thirty-nine submitters made additional comments. Most submitters expressed support and enthusiasm for the Draft Plan

Table 4

General comments	Number of submitters
General support/enthusiasm for the proposed developments	53
That there should be small vehicles or other internal transport to assist people who have trouble getting around the gardens	4
There is already enough development	3
Concern that quality standards are upheld as developments progress	4

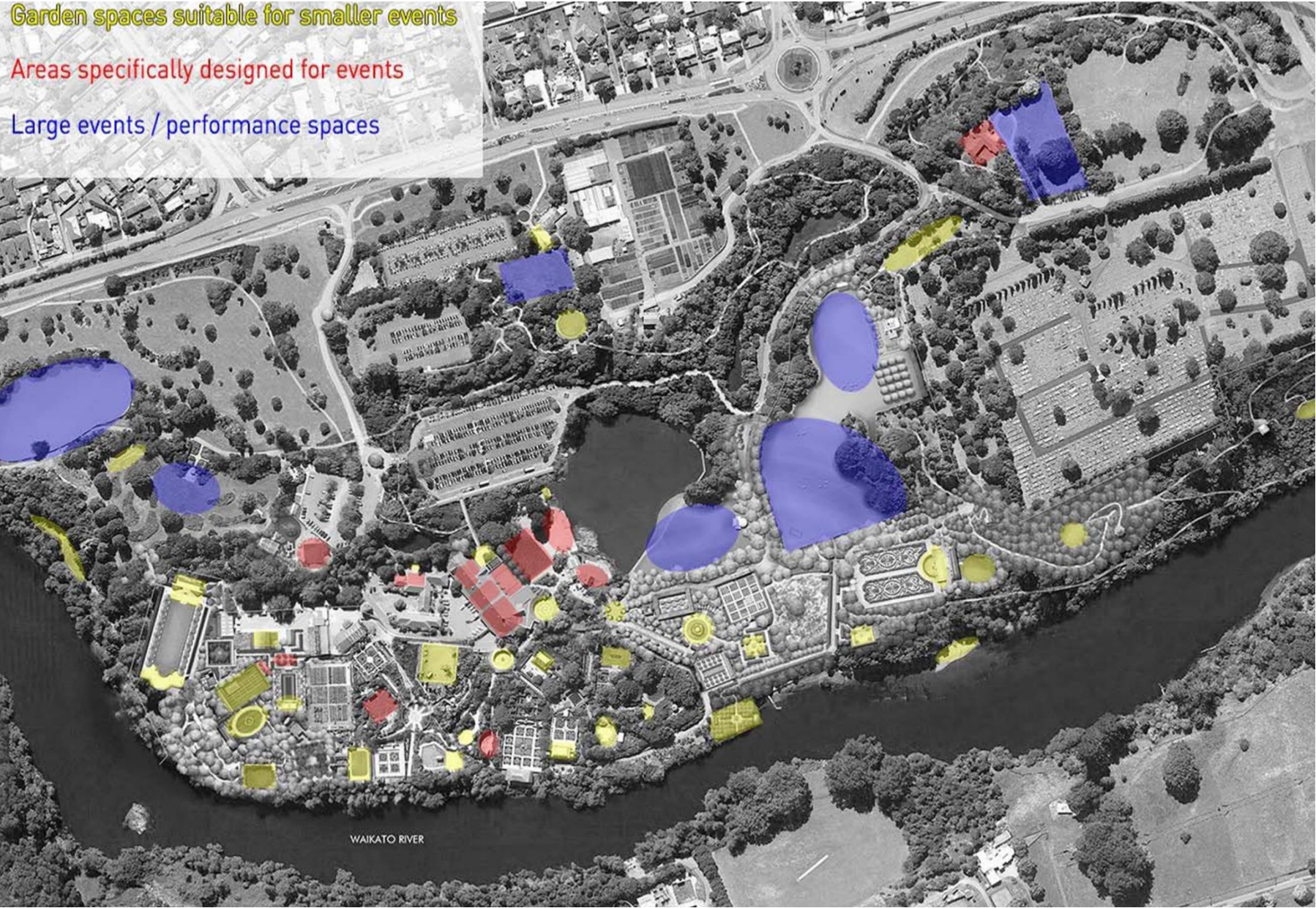
Other topics raised through the submission process

Potentially relevant issues raised through open comments:

- There should be greater levels of activation (i.e. events, commercial operations) in the gardens
- The potential environmental and engineering challenges associated with constructing a new road by the waterfall
- That new developments may limit casual recreation and limit public access to the Waikato River
- That the new gardens should not come at the expense of the existing gardens
- That the timing of the gardens needs to be carefully considered, and that paid entry should only come into operation once further developments are undertaken
- That partnerships with existing Hamilton Stakeholders should be considered through any planning (i.e. the Café)
- Charge for parking instead of an entry fee
- That it should be made clearer that the cemetery is not part of the Hamilton Gardens
- The importance of cycleways
- There should be more indigenous flora and fauna/indigenous flora and fauna should be protected
- That a heritage assessment to identify and protect existing aspects should be undertaken
- That the historic Stationmaster's House should be returned to Frankton

Misunderstandings

- Some submitters mistakenly thought the large Ghost Gum on the Rhododendron Lawn would be removed - however this tree is retained in planned developments
- Some submitters assumed that developments would produce a substantially larger number of car parks, however the plan only provides for approximately 40 extra car parks



Options for car parking configurations

Four options (including the option proposed in the Draft Hamilton Gardens Management) have been investigated. The four options have been assessed against sixteen criteria (below). The proposed options are illustrated in attachment 4.

Proposed and alternative parking configurations assessed against key criteria

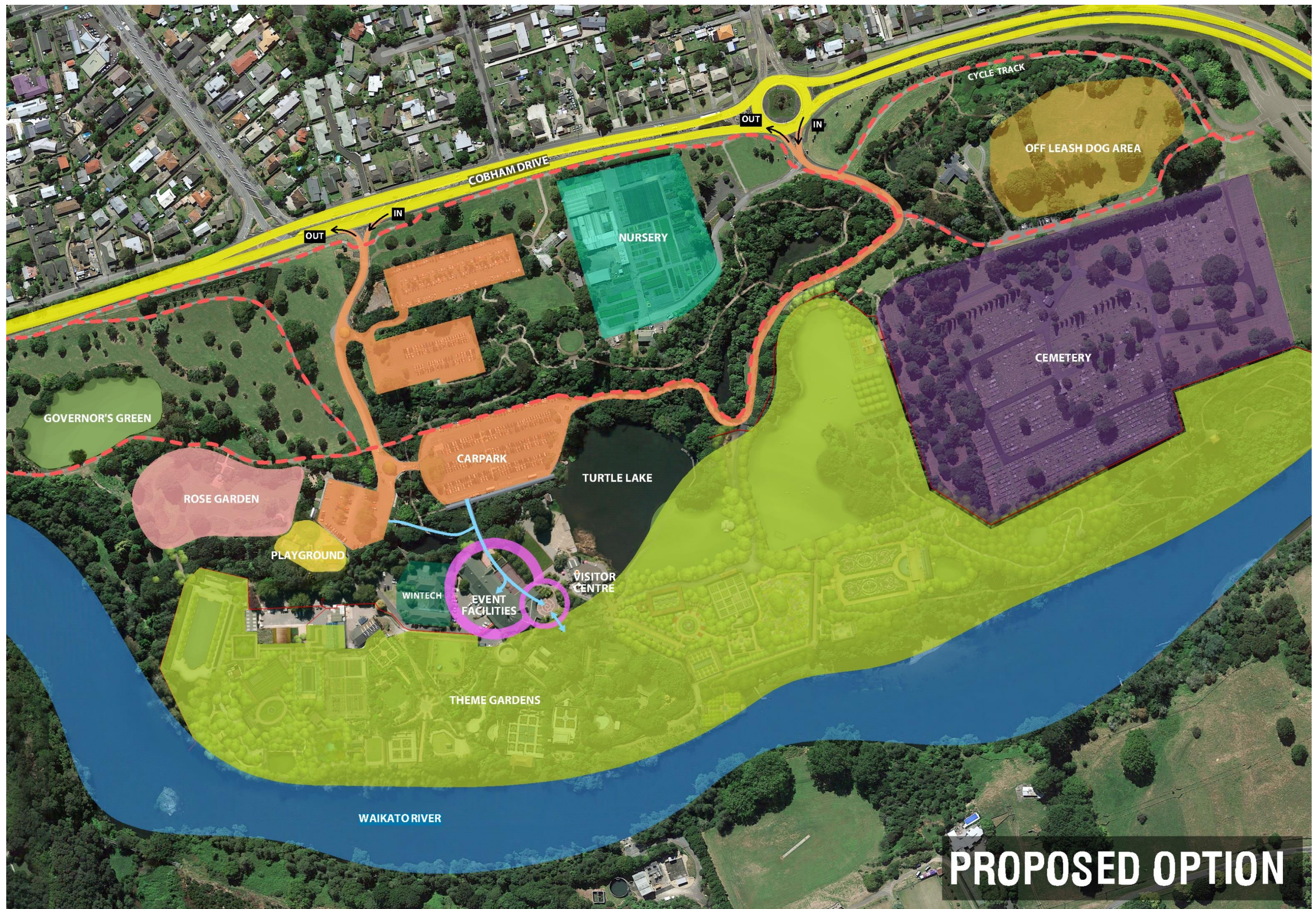
	Proposed Option	Alternative Option 1	Alternative Option 2	Alternative Option 3
All carpark are accessible from both entrances to make full use of the available spaces				
The themed gardens are grouped together and accessible through a single entrance				
An attractive entranceway is created into the Gardens				
Minimal distance between frequently used lower carpark and the theme gardens, café and event facilities				
Full advantage is taken of the attractive river frontage				
The Rhododendron Lawn is retained				
Bus and cycle access is improved				
Space is created to complete the garden collection				
Known heritage sites are avoided				
Security of carpark, visitors and assets is improved				
Nursery isn't reduced in size undermining its viability				
Destruction of major tree groups and existing gardens is avoided				
A single drop-off, bus park covered way and entrance into the gardens and event facilities				
Easy access back onto future state highway				
Disabled accessibility is improved between the upper and lower portions of the park				
The full Governor's Lawn area is still available for overflow parking				

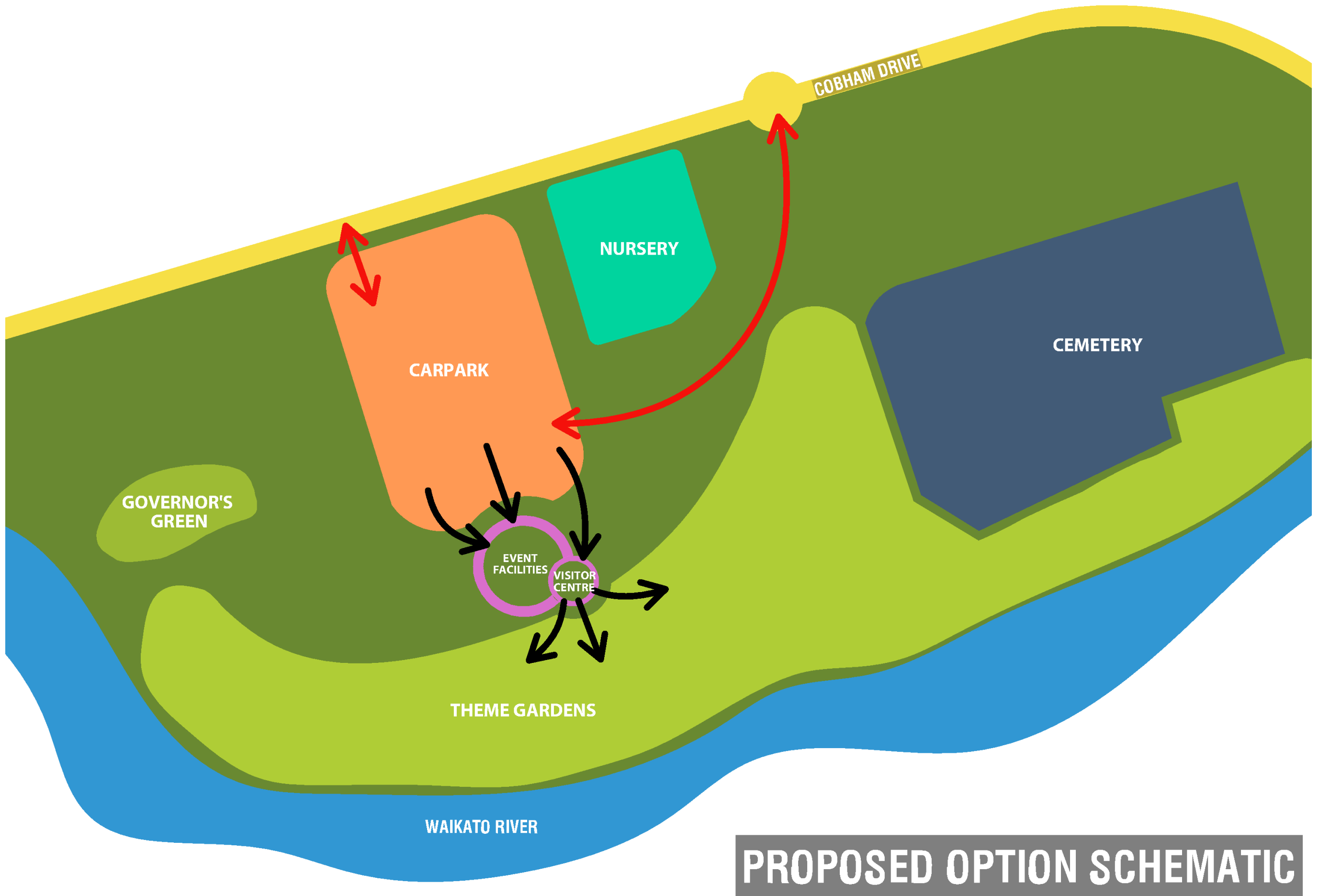
Meets criteria 











Resolution to Exclude the Public

Section 48, Local Government Official Information and Meetings Act 1987

The following motion is submitted for consideration:

That the public be excluded from the following parts of the proceedings of this meeting, namely consideration of the public excluded agenda.

The general subject of each matter to be considered while the public is excluded, the reason for passing this resolution in relation to each matter, and the specific grounds under section 48(1) of the Local Government Official Information and Meetings Act 1987 for the passing of this resolution follows.

General subject of each matter to be considered	Reasons for passing this resolution in relation to each matter	Ground(s) under section 48(1) for the passing of this resolution
C8. Hamilton Gardens Sponsorship Agreement) Good reason to withhold) information exists under) Section 7 Local Government) Official Information and) Meetings Act 1987)	Section 48(1)(a)

This resolution is made in reliance on section 48(1)(a) of the Local Government Official Information and Meetings Act 1987 and the particular interest or interests protected by Section 6 or Section 7 of that Act which would be prejudiced by the holding of the whole or relevant part of the proceedings of the meeting in public, as follows:

Item C8.	to enable Council to carry out negotiations	Section 7 (2) (i)
----------	---	-------------------