

26 March 2025

Time	Topic and Purpose	Presenter(s)	Format	Time allocated
9.30am	<b>FENZ Presentation on Risks / Pressures, etc.</b> The purpose of this session is to inform the Elected Members of the resourcing, risks, and pressures, that affect Fire and Emergency New Zealand that the Hamilton City Council could help with to make a real difference.	Matt Leonard (FENZ)	Open Briefing	60 Minutes
SESSION ENDS				



WHAKARATONGA IWI

**FIRE**  
**EMERGENCY**

NEW ZEALAND



---

# Fire and Emergency

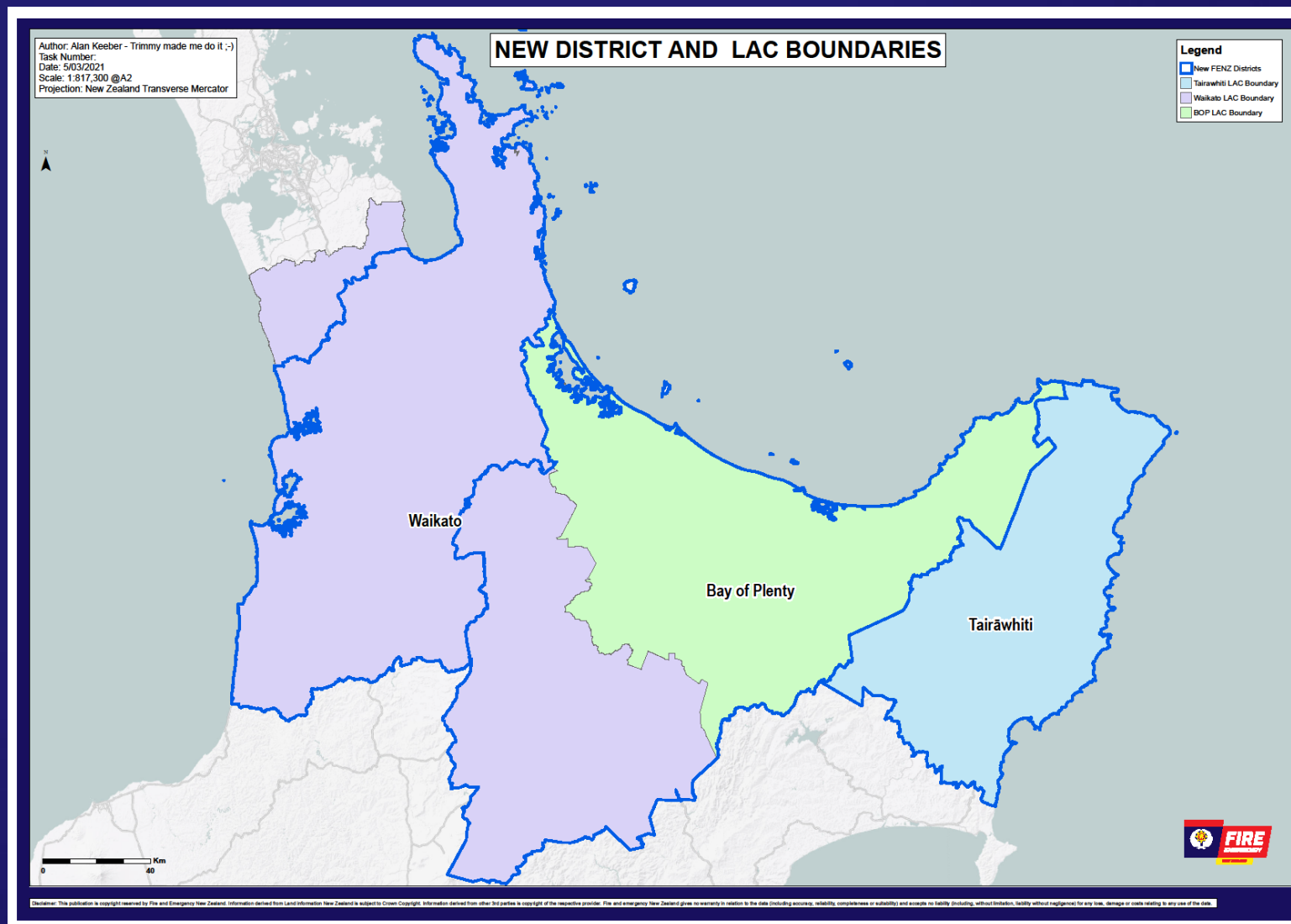
## NZ — HCC presentation



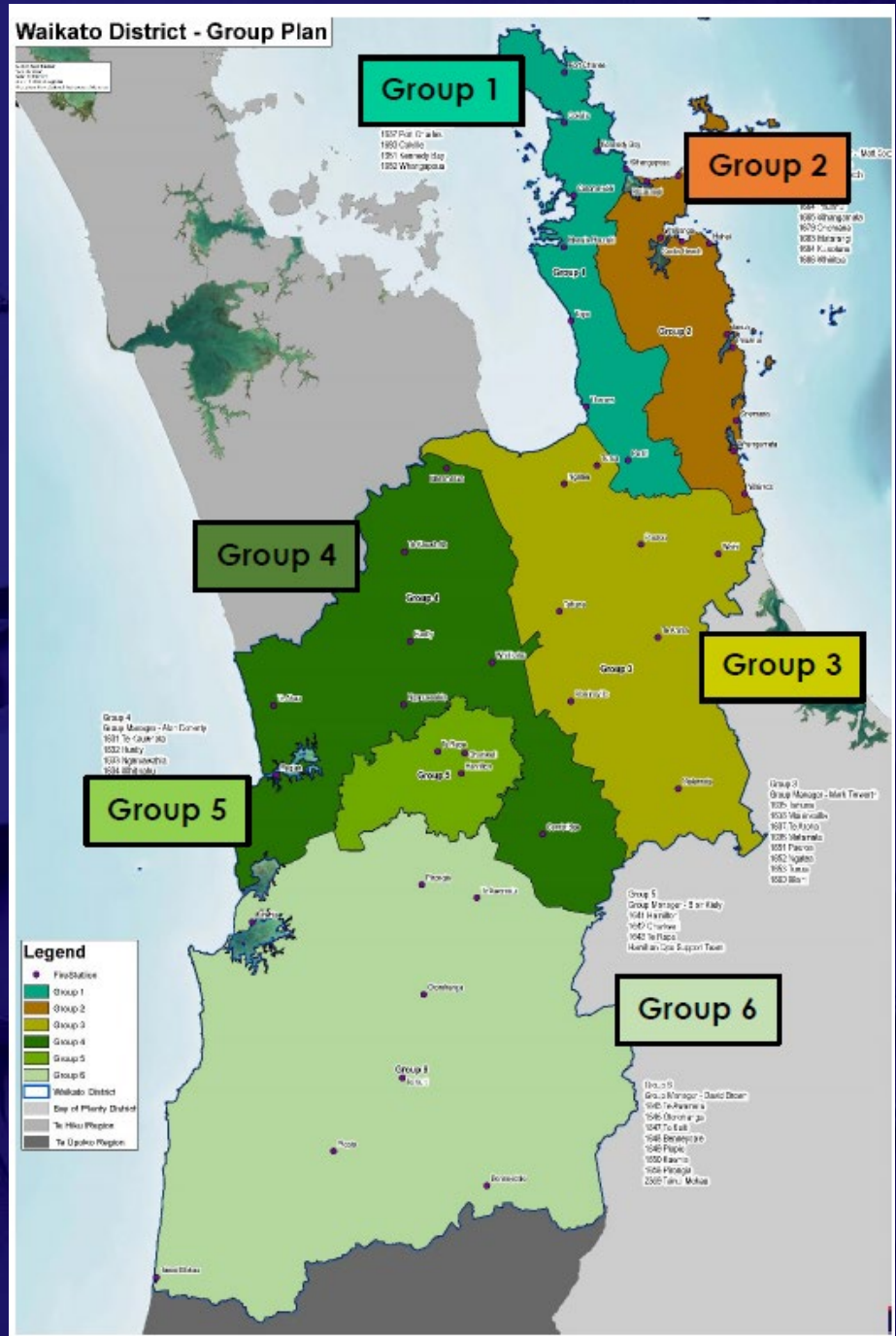
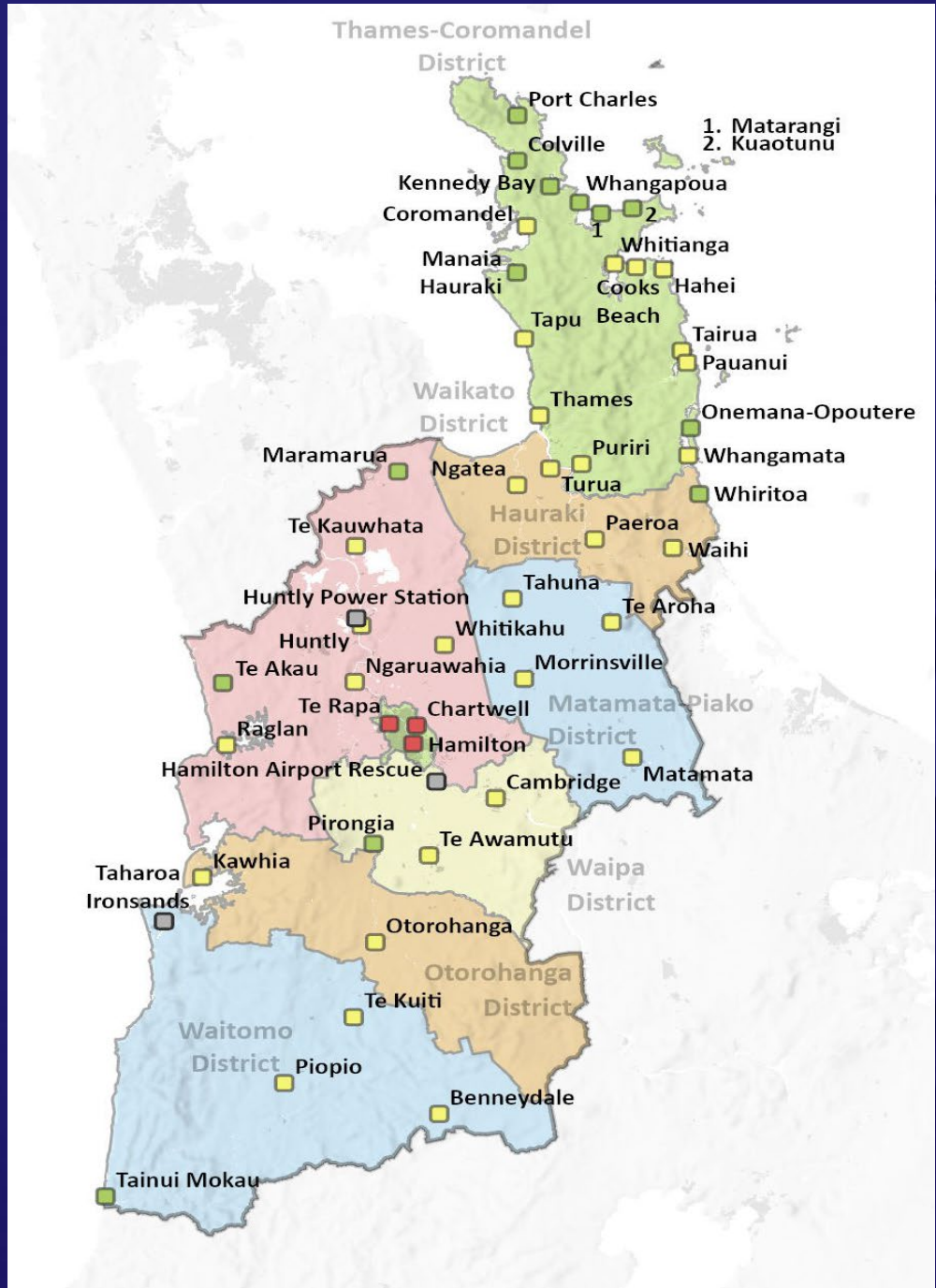
WHAKARATONGA IWI

**FIRE  
EMERGENCY**

NEW ZEALAND



fireandemergency.nz



fireandemergency.nz

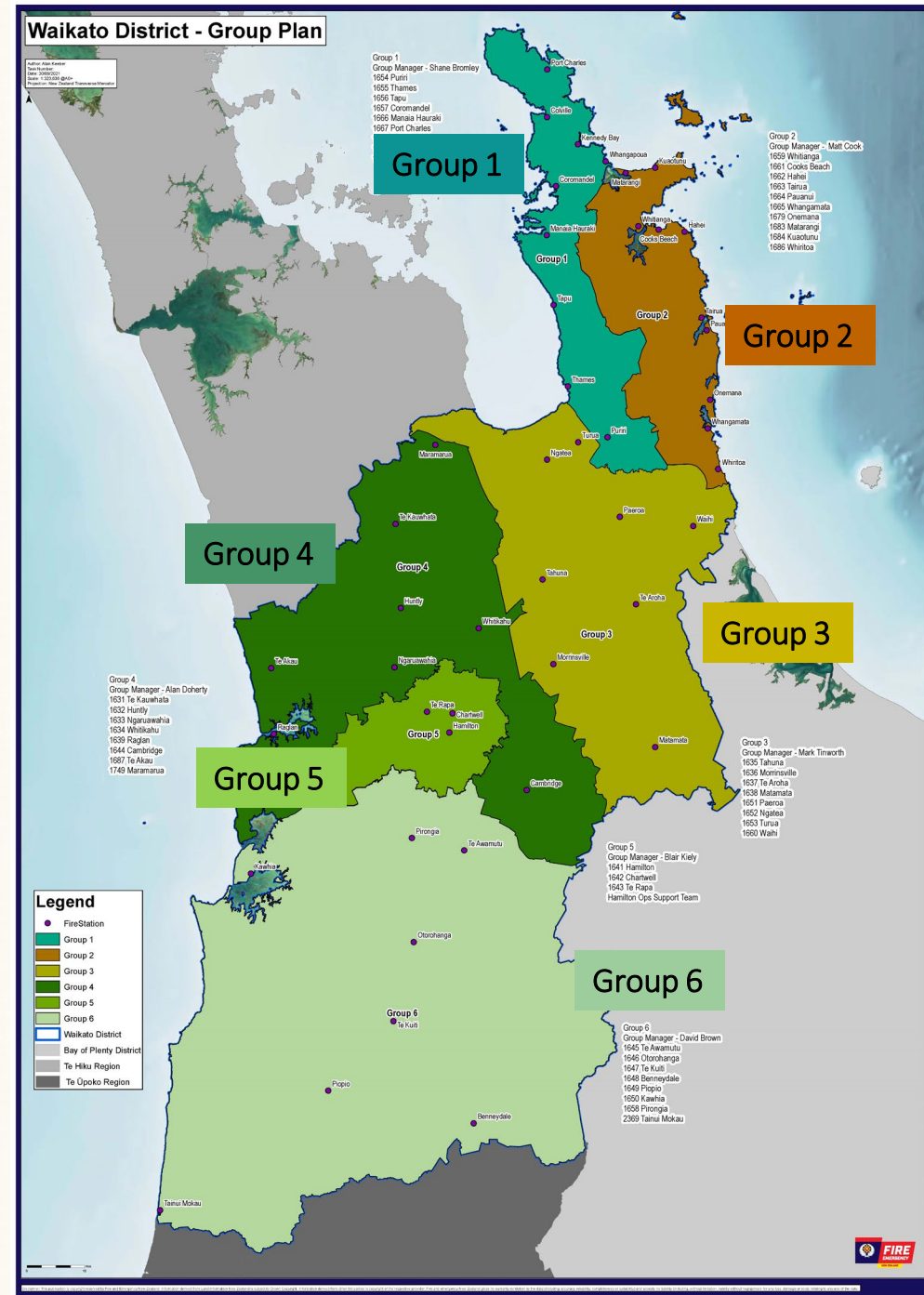


# Waikato Overview

- District Leadership Team – 6 Group Managers
- Community Risk Manager – RR (7) and CRR (3)
- 45 Brigades in Waikato District
- Hamilton brigade -3 Career stations (4 crews)
- 44 Volunteer Brigades

## Priorities

- Growth – in around Hamilton
- Career staffing – increase – Match growth of city
- Wildfire risk – preparedness + response
- Risk Reduction workload – reactive mode
- Volunteerism - impacts
- VSO workload – Brigade capability
- Travel times





**FIRE**  
**EMERGENCY**

NEW ZEALAND

# Key Risks and Issues for Hamilton

- Industrial and residential growth within the City
- Increase in response rates
- Staffing pressures
- How Hamilton supports the network - volunteerism
- Sudden onset disasters - preparedness





**FIRE**  
**EMERGENCY**

NEW ZEALAND

# District Managers Priorities

- SH&W
- SPE performance
- Leadership development
- Volunteerism
- Response Capability
- Partnerships and relationships

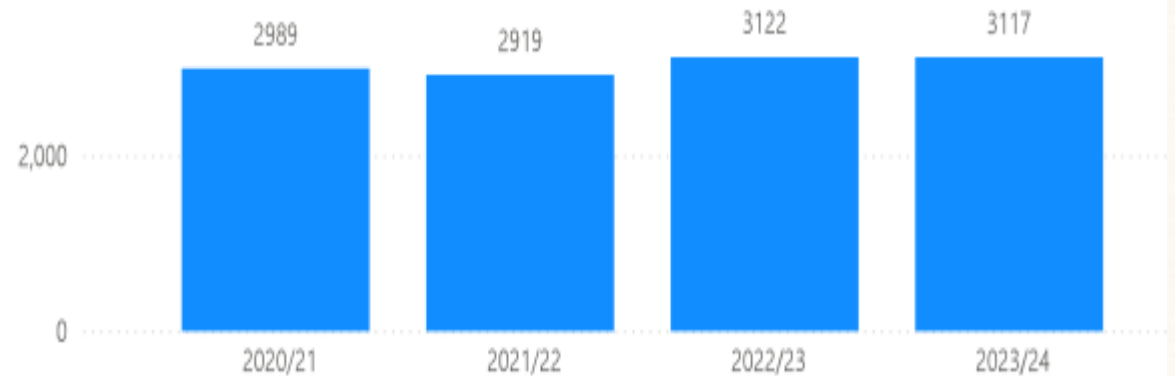
# Increased incident response rate – District

- Hamilton Station has increased by 24%
- Chartwell Station has increased by 31%
- Te Rapa Station has increased by 41%

Average number of incidents per week is now 60, compared with 44 in 2017/18.

8.5 incidents per day compared with 6.3

Total calls for Hamilton City Stations



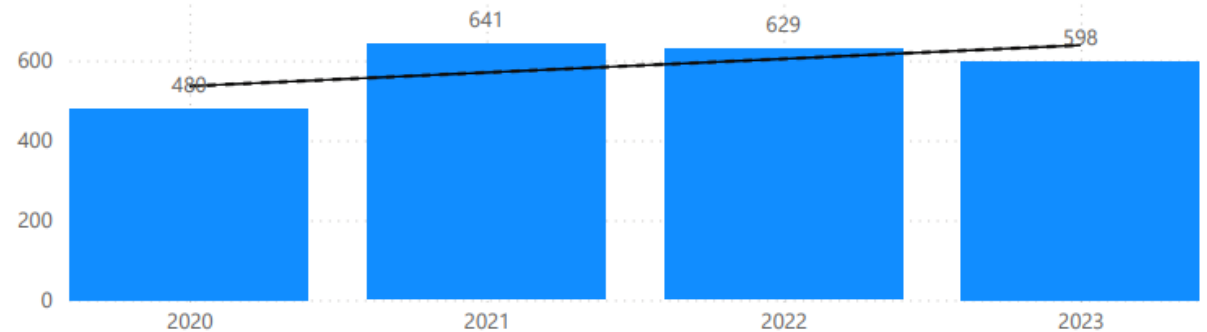


# Concurrent calls

The number of concurrent calls is increasing which is further compounding the issues being experienced around the Hamilton City stations.

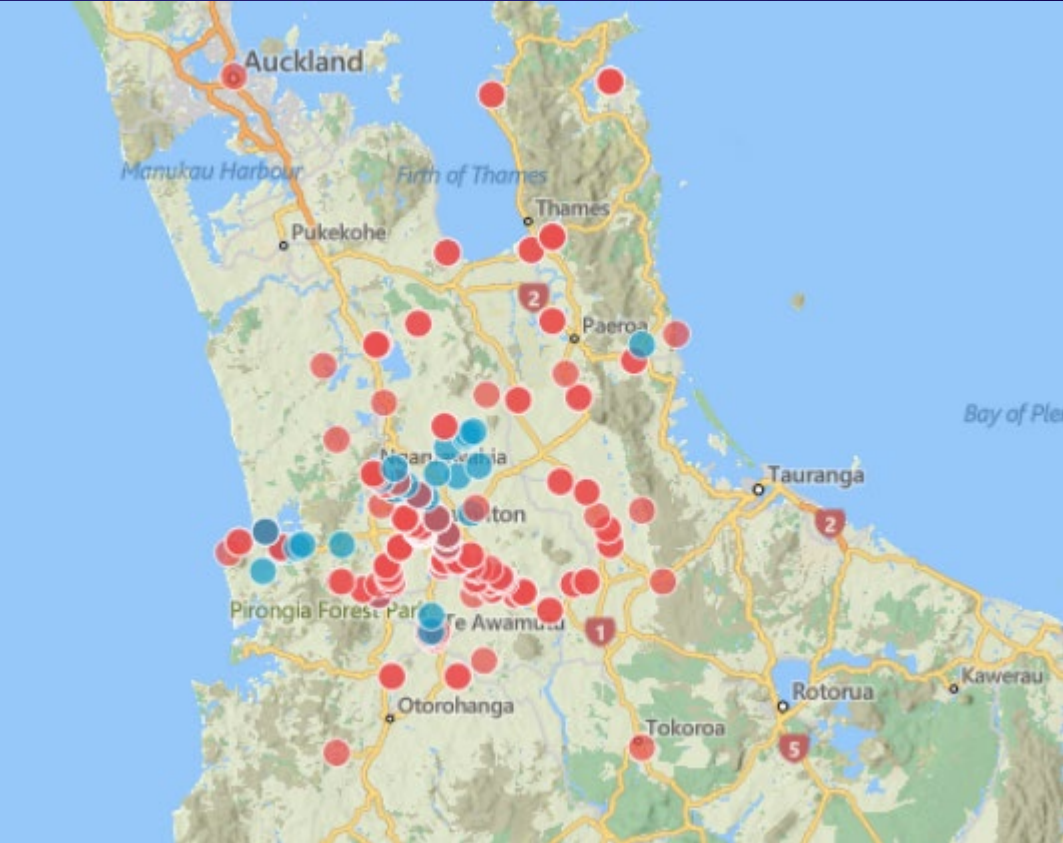
This number has doubled over the last 5 years from an average of 0.8 per day to 1.5 per day.

Concurrent Calls for Hamilton city stations

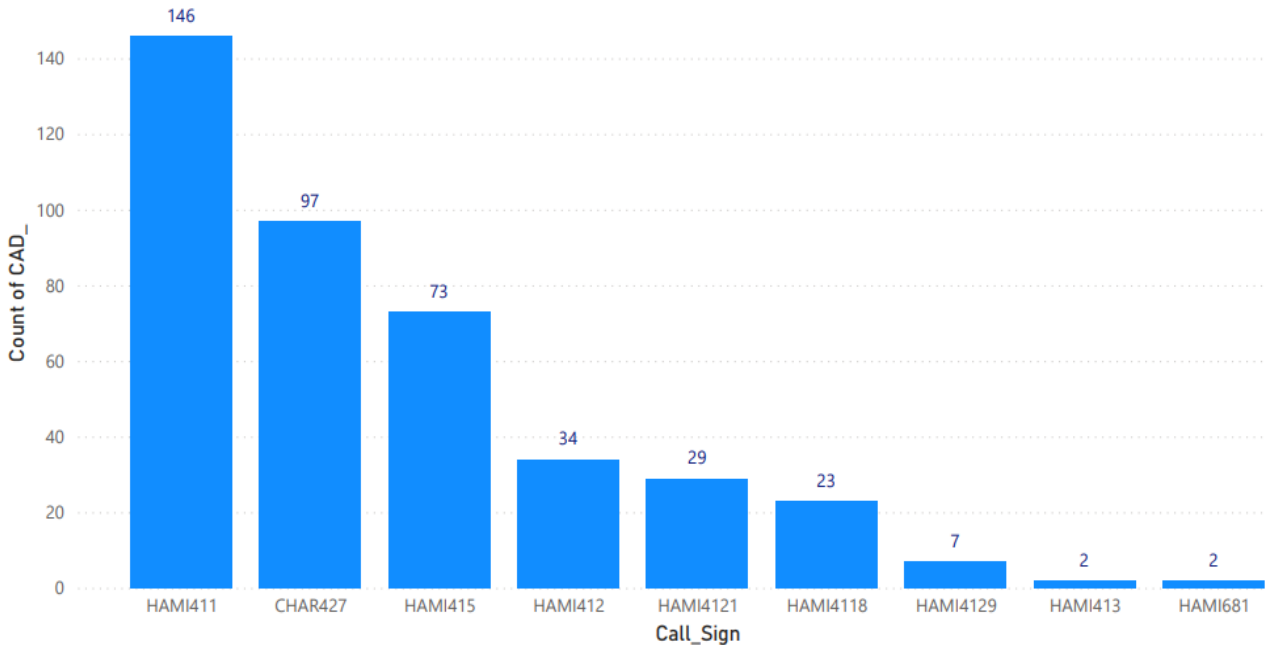


# Support for district

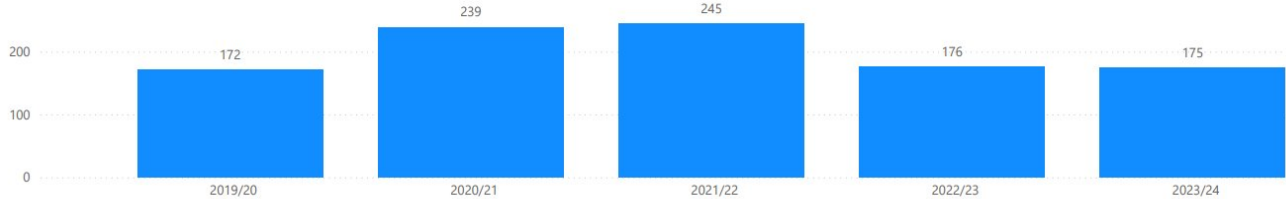
## Cross crewing of appliances



Hamilton City Callsigns in responses outside FRA



Volunteer responses into Hamilton City Station Zones





*“Delivering for Aotearoa New Zealand.... includes work that contributes to reducing the risk of fire, promoting, monitoring and enforcing fire safety regulations, improving our response capability....”*

Fire & Emergency NZ - Statement of Performance Expectations 24/25 p.4

---

# Risk Reduction - Built Environment

## Today's Challenges and Tomorrow's Risks



---

# Firefighter Safety

## Key challenge:

- Risk Reduction's ability to influence some building designs to ensure firefighting can be undertaken safely.

## Key Risk:

- Modern buildings with minimal consideration for design impede our efforts during the building design and approval stages, thereby increasing the risk to firefighters during internal firefighting operations.

**Firefighter safety = Community safety**

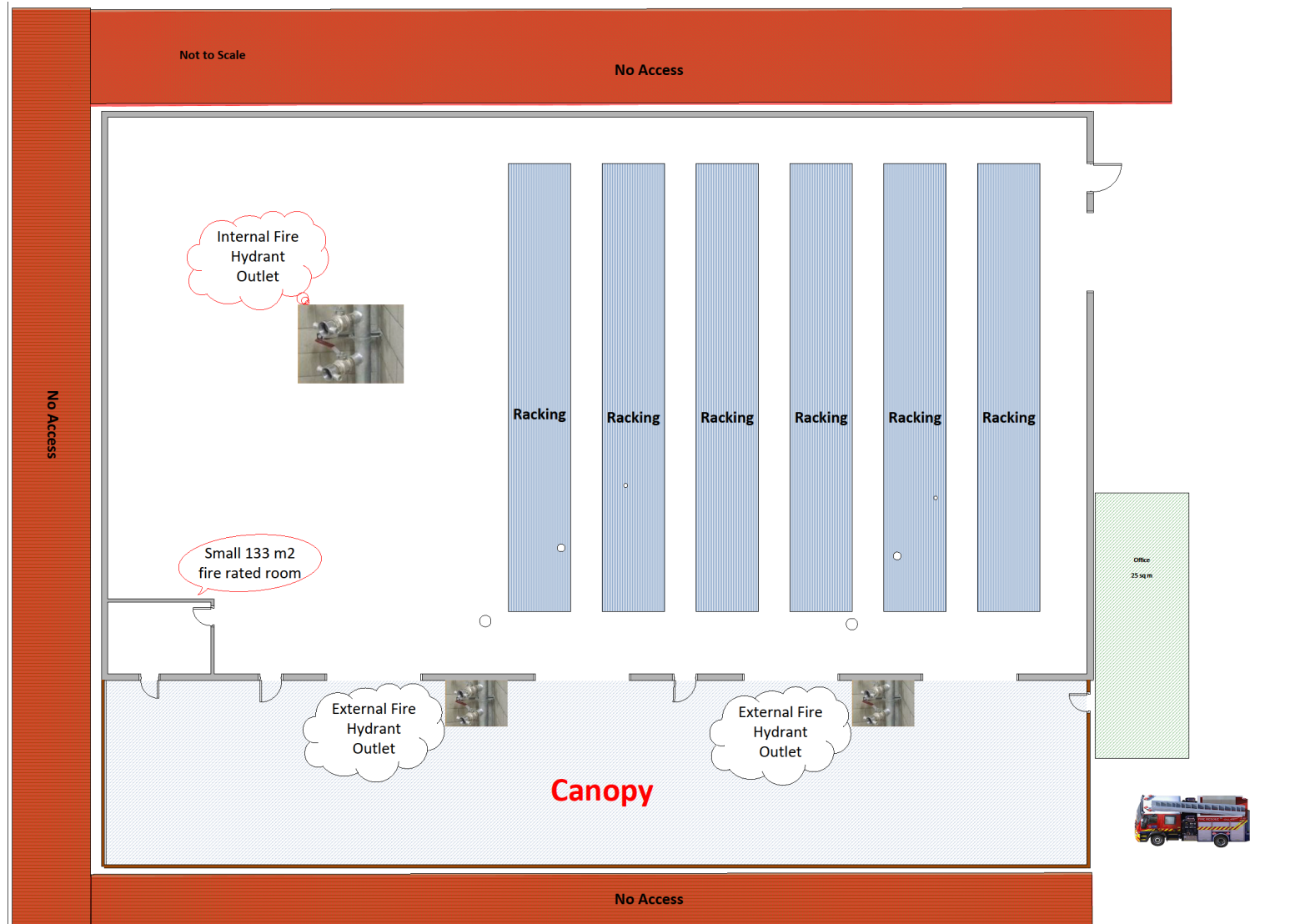
---

# Firefighter Safety

Risk Reduction's ability to impact on firefighter safety is hindered by:

- Inability to influence some building designs
- Attitudes of designers/consultants
- Fire and Emergency NZ ability to challenge the current legislation
- Rate of change vs frontline awareness

# Case Study – *Typical Building Example*



**All new building work should comply with Section 17 of the Building Act:**

- **achieved 3 ways**
- acceptable solutions (prescribed) (C/AS2) or
- verification method with design scenarios (C/VM2).
- alternative solution



---

# Firefighting Water Supplies

- Not part of the Building Consent process.
- Insufficient firefighting water to undertake safe or effective firefighting.

