

Time	Topic and Purpose	Presenter(s)	Format	Time allocated
11.45am	Waikato Regional Council (WRC) Collaboration on climate in future The purpose of the session is to inform Members of the content of the WRC Climate Roadmap and invite Q&A as well as gather feedback on what's most relevant and of interest for increased collaboration in future, in particular to share expertise effectively and reduce any potential duplication of work.	Cr Jennifer Nickel (WRC)	Open Briefing	60 Minutes
SESSION ENDS				

Presentation to Hamilton City Council

Council collaboration opportunities feedback workshop

28 August 2024

waikatoregion.govt.nz



Ngā aronga nui Our strategic priorities



Wai
Water



Rerenga rauropi, tiakitanga taiao
Biodiversity and biosecurity



Takutai moana
Coastal and marine



Hanganga tauwhiro
Sustainable development and infrastructure

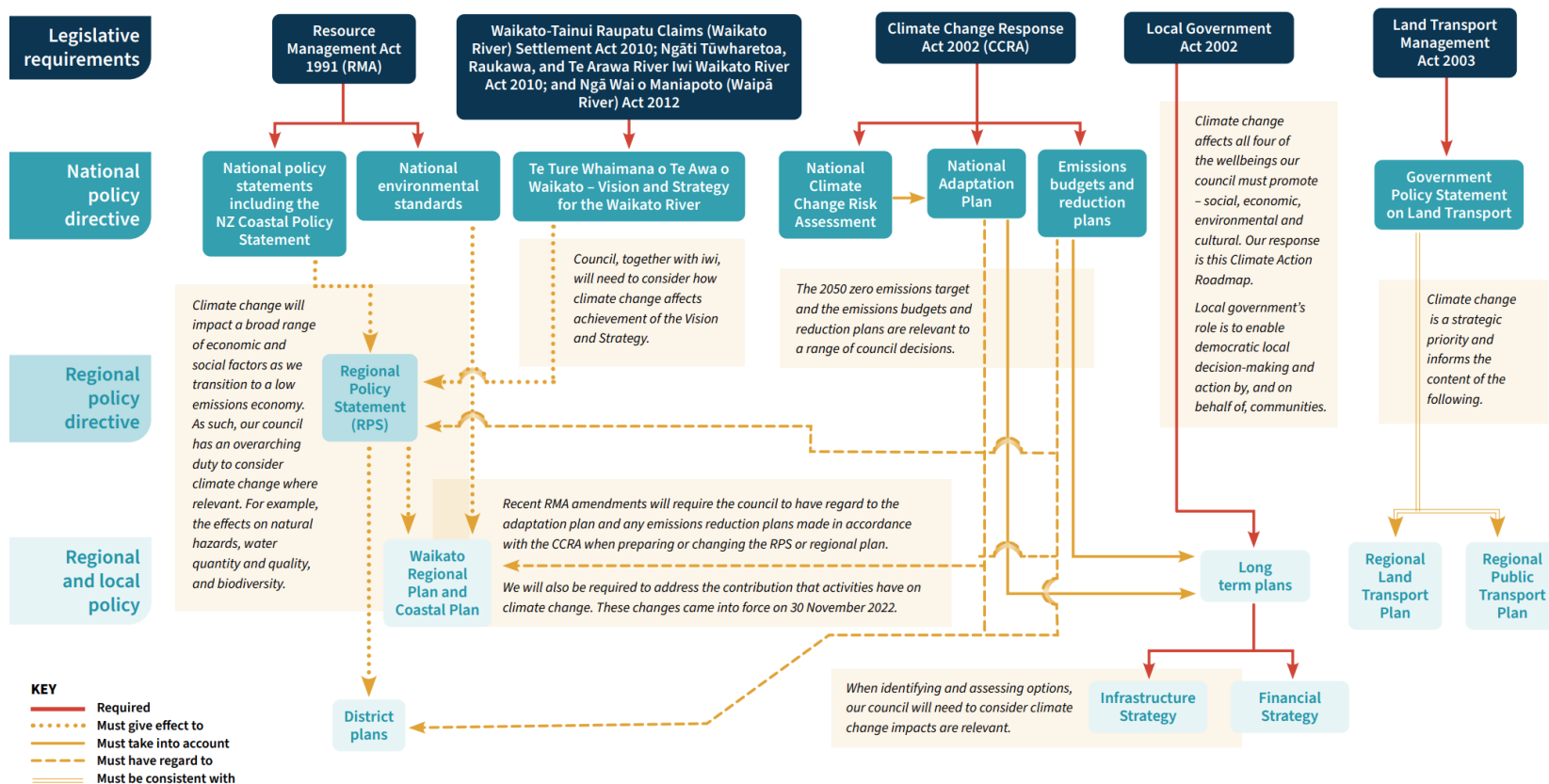


Hononga hapori
Community connections



Whakaheke tukunga
Transition to a low emissions economy

Legislation guiding climate response



Council directions

- Strategic Direction 2023-2025
- Climate implications in all council decision-making
- Climate Action Roadmap
- Climate Change Response Position Statement

Governance and implementation

- Climate Action Committee
- Risk management
- CE KPIs
- Climate Action Roadmap Advisory Group (cross org staff group)
- Climate Action Work Plan

Climate Action Committee activity summary

Speaker examples

- **Kelly Forster** - He Waka Eke Noa – national primary sector climate action partnership and discussion on the work programme and opportunities for collaboration.
- **Paul Winton** – consultant - introduction of the Transport 2030 tool to assist with quantifying the carbon effects of options to reduce transport emissions.
- **David Hall** – AUT - new approaches to financing biodiversity restoration and climate action.
- **Belinda Storey** – consultant - financing mechanisms for coastal retreat/climate leases.
- **Richard Hobbs** - Transpower - renewable energy projects and opportunities for the Waikato region.
- **Lachlan Rule** – MBIE - Just Transitions Unit supporting business and communities during transition to low emissions economy.
- **Mike Jebson and Jane Davidson** - Ministry of Primary Industries - presentation on water availability and security issues for the food and fibre sector and rural communities.

Topic examples

- Development of the council's corporate emissions reduction plan to 2050.
- Inclusion of climate as a strategic priority in 10-year strategy, aligned to UN's Sustainable Development Goals.
- Three yearly update to the Waikato's regional greenhouse gas inventory - identified priority areas for action: agriculture, planting opportunities, transport, transition to renewables.
- Discussion about 'blue carbon' stocks in the Waikato region looking at the current and future issues threatening blue carbon generation and opportunities for management and improved carbon accounting.
- Approval of the approach to incorporating Mātauranga into the Climate Action Roadmap using the Mātauranga Māori project management toolkit.
- Climate Change Investment Strategy.
- Reports on series of stakeholder workshops for transition to a low emissions economy and risk assessments/adaptation.
-and more

waikatoregion.govt.nz

Waikato
REGIONAL COUNCIL
Te Kaunihera ā Rohe o Waikato

Data and evaluate impacts

MITIGATION



Low carbon economy

Reducing carbon emissions and building community resilience will be considerations in all policies, plans and services.

Scientific data and mātauranga Māori will guide all decision making on mitigation and adaptation.

ADAPTATION



Resilient communities



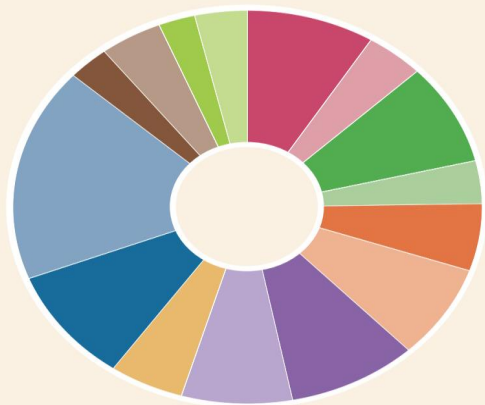
Summary of projected climate changes for the Waikato region

- Warmer. Increased drought.
- Increased rainfall intensity.
- Increasing sea levels. Increased storm surge.
- Increased westerly winds (winter and spring). Increased north easterly winds (late summer and autumn).
- Increased tropical cyclones.






Waikato region emissions

Structure of the Waikato economy
(value added by industry) ²²

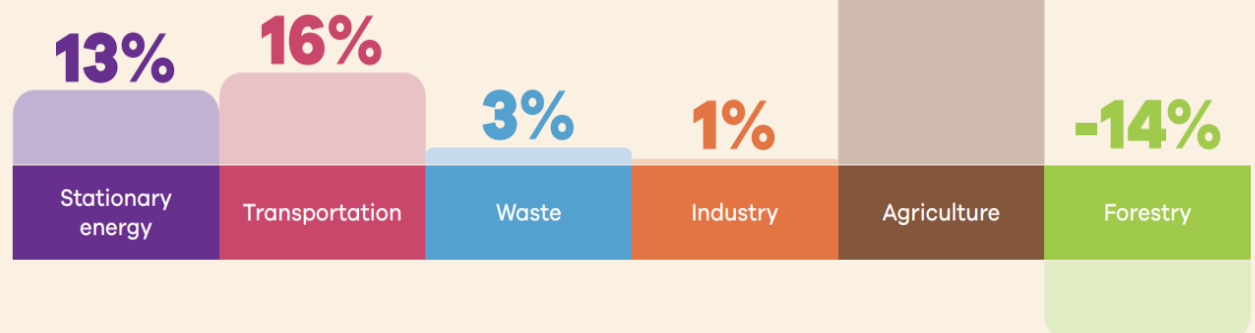


- Agriculture
- Other primary
- Primary manufacturing
- Other manufacturing
- Utilities
- Construction
- Wholesale and retail
- Healthcare and social assistance
- Education and training
- Other services
- Property related services
- Distribution
- Information media, telecoms etc
- Financial and insurance services
- Public admin and safety

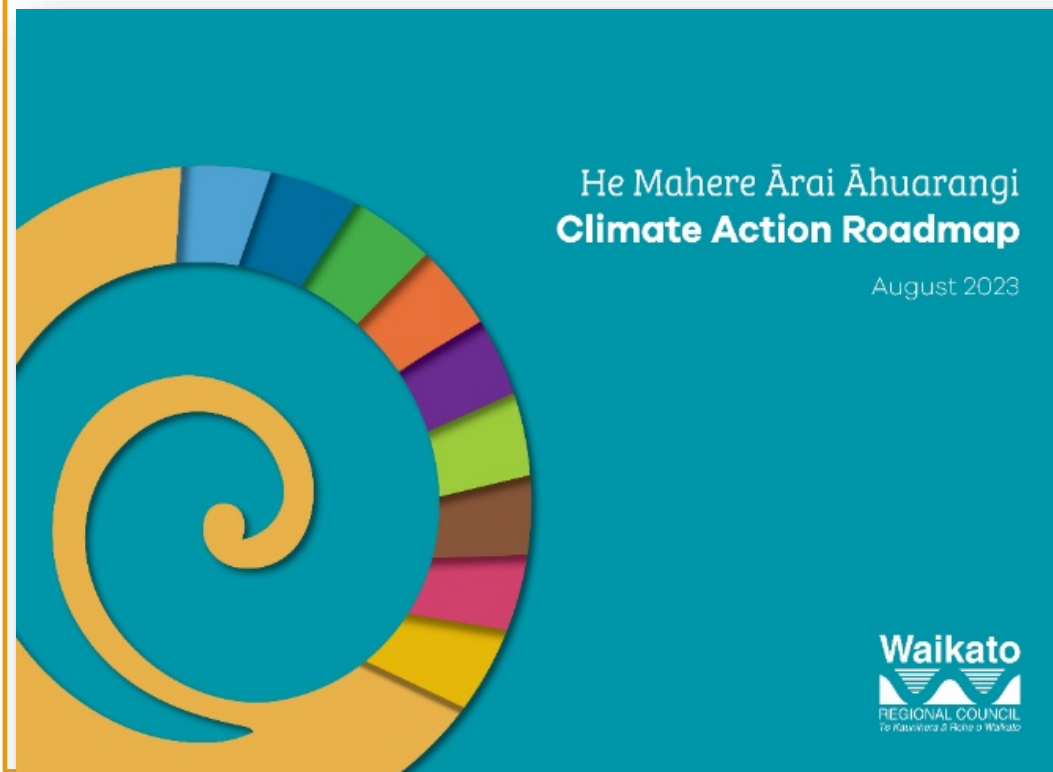
Waikato emissions in 2021/22

	Gross emissions	12,023,719t CO ₂ e
	Less forestry	-1,749,712t CO ₂ e
	Net emissions	10,274,006t CO ₂ e

Note: Due to rounding, numbers presented may not add up precisely to the totals provided.



Climate Action Roadmap



.....what it is

- Evidence-based document
- Integrates climate change responses across all council activities
- Provides guidance and direction for staff on how to integrate climate change into council activities and inform work programme planning and delivery
- Iwi and stakeholders can see our general direction of travel and how we might work together
- Guides investment decision-making for our Long Term Plan 2024-2034

Ngā ara o te mahere **Roadmap pathways**

Wai
Water

Te takutai me te moana
Coastal and marine

Rerenga rauropi, tiakitanga taiao
Biodiversity and biosecurity

Kia aumangea te rohe
Regional resilience

Te pūngao me te ahumahi
Energy and industry

Te whakatupu ngāhere me te whakatō tupu
Afforestation and planting

Ahuwhenua me te whenua haumako
Agriculture and soils

Te hanga tāone me te tūnukutanga
Urban form and transport

Ngā puna pūtea mā te hāpori
Community funding and investment



Water

Goals for success

- Increase regional water security through a multi-stakeholder plan to ensure wellbeing and resilience within defined environmental limits for the next 30 years.
- Put the health of our region's waterbodies and freshwater ecosystems first when making decisions, giving effect to Te Mana o Te Wai and Te Mana o te Awa.
- Leverage our investment in catchment and river restoration work through funding partnerships and community actions, contributing to long term water quality improvements.



Coastal and marine

Goals for success

- Adopt a ki uta ki tai – mountains to sea – approach to consider coastal ecosystems as sensitive receiving environments.
- Work with communities, iwi and hapū to carry out integrated coastal and catchment management planning and restoration activities to protect and enhance coastal and marine ecosystems.
- Partner with communities and iwi and hapū to deliver a future-focused coastal plan



Biodiversity and biosecurity

Goals for success

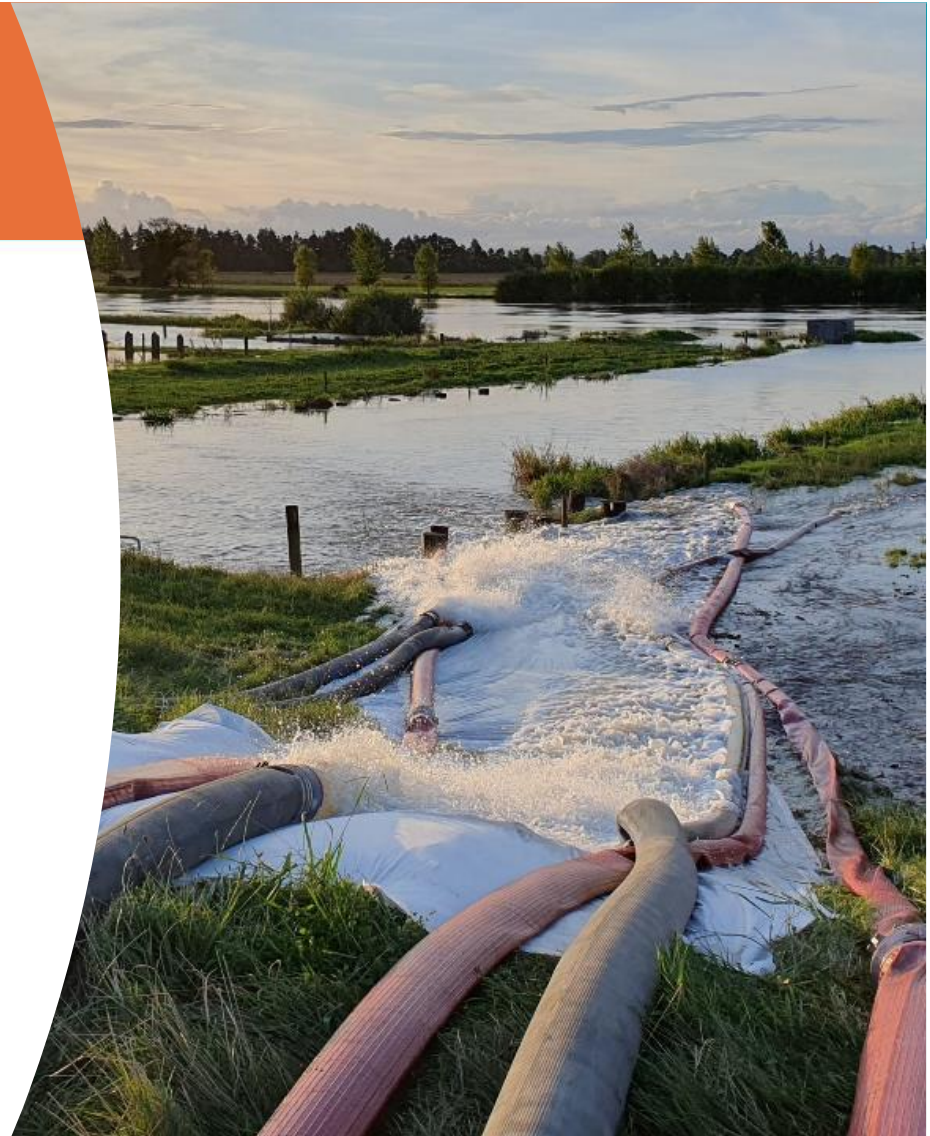
- Work with partner agencies to have an agreed region-wide biodiversity accord in place.
- Progress a prioritised strategic pathway for our region that protects and restores biodiversity out to 2050 and beyond.
- Work with others to protect ecosystems, human health and economic activities through effective pest management.
- Support and empower people to protect and restore the natural environment and taonga species by integrating their efforts with councils and other agencies.



Regional resilience

Goals for success

- Engage communities, iwi and hapū in the development of a sustainable flood management and land drainage infrastructure strategy that considers land uses, working with nature and funding



Energy and industry

Goals for success

- Work with iwi partners and stakeholders to agree options and equitable pathways to help guide industries and communities to reduce use of fossil fuels and increase energy efficiency in our transition to a resilient, low emissions economy.
- Deliver an updated regional energy strategy and facilitate an increase in access to and use of renewable energy.
- Achieve year on year progress toward reducing the council's own corporate emissions, including through our supply chain, consistent with New Zealand's target for net zero greenhouse gas emissions by 2050



Afforestation and habitat restoration

- Promote awareness of the climate risks and landscape and farm-scale transformational changes to land use that will be needed in our region to respond to climate change and supporting land users to adapt.
- Review and update zone and catchment plans with a climate lens to address the key issues identified in this roadmap.
- Incentivise afforestation and planting programmes in priority catchments through targeted rates and in partnership with the Ministry of Primary Industries, Waikato River Authority, Department of Conservation and others. Priority will increasingly be given to native afforestation and planting programmes.
- Investigate opportunities for the council to make use of a voluntary carbon market or incentivise additional planting as a result of such a market.



Agriculture and soils

Goals for success

- Enable the Waikato region's farmers to be national leaders in the adoption of climate smart practices and technologies by aligning our farmer education and support services with those of industry bodies and central government.
- Engage with land users and iwi and hapū in the development of a sustainable flood management and land drainage infrastructure strategy for a changing climate that considers land uses, working with nature and funding



Urban form and transport

Goals for success

- Lead and encourage land-use decisions that shape sustainable, resilient transport networks to ensure communities have affordable access to services, amenities and social life.
- Improve safe, accessible and affordable low emissions passenger transport options for our communities, with a particular focus on frequency and reliability.
- Advocate for infrastructure and investment decisions that support greater climate resilience and a rapid transition to a low carbon freight and distribution network through the upper North Island.



Community funding and investment

- Follow the Principles of Responsible Investment, which embody an internationally accepted framework for investors to manage ESG issues in a manner consistent with improving long-term investment returns
- Continue to work with the council's strategic investment advisor to ensure fund investment processes and practices reflect good industry practice and remain current with emerging opportunities.
- Monitor central government's work to consider whether to extend the application of mandatory climate-related disclosures to ensure our climate reporting and disclosure practices will meet foreseeable future requirements.



Roadmap progress update

- Provide an update on progress against delivery of the roadmap quarterly.
- For the October 2023 to January 2024 period:
 - 109 commitments:
 - 67 are in progress,
 - 13 are in planning,
 - 16 are not started yet,
 - 5 are awaiting central government direction,
 - 1 is completed, and
 - 7 are awaiting updates
 - Interconnectivity
- Link to the Roadmap – [Climate Action Roadmap](#)
- For the February to April 2024 period:
 - 109 commitments:
 - 70 are in progress,
 - 13 are in planning,
 - 14 are not started yet,
 - 7 are awaiting central government direction,
 - 4 is completed, and
 - 1 are awaiting updates

Te Āki Tūroa | Nature+

- Framework using nature-based solutions to offset hard-to-reduce GHG emissions
- Focus on planting native trees and shrubs on council land, provide habitat for native birds, improve water quality and resilience to climate change
- Target to achieve WRC net carbon emissions neutrality by 2050
- Generate carbon credits and, in time, biodiversity credits.



Example planting plan

- Planting up to 9.6 per cent of the council's 2507 hectares of suitable land in native species (between 140 and 240 ha) will achieve carbon neutrality for corporate & public transport services.
 - At comparable/less cost than buying credits
 - Multiple benefits.
- Further, ability to partner with others to address and reduce other indirect sources of emissions, including from drainage infrastructure and supply chain.



CONNECT
WITH
US



@ourwaikato



ourwaikato



/Waikatoregion



waikatoregion.govt.nz

Presentation to Hamilton City Council

Council collaboration opportunities feedback workshop

28 August 2024

waikatoregion.govt.nz



Ngā aronga nui Our strategic priorities



Wai
Water



Rerenga rauropi, tiakitanga taiao
Biodiversity and biosecurity



Takutai moana
Coastal and marine



Hanganga tauwhiro
Sustainable development and infrastructure

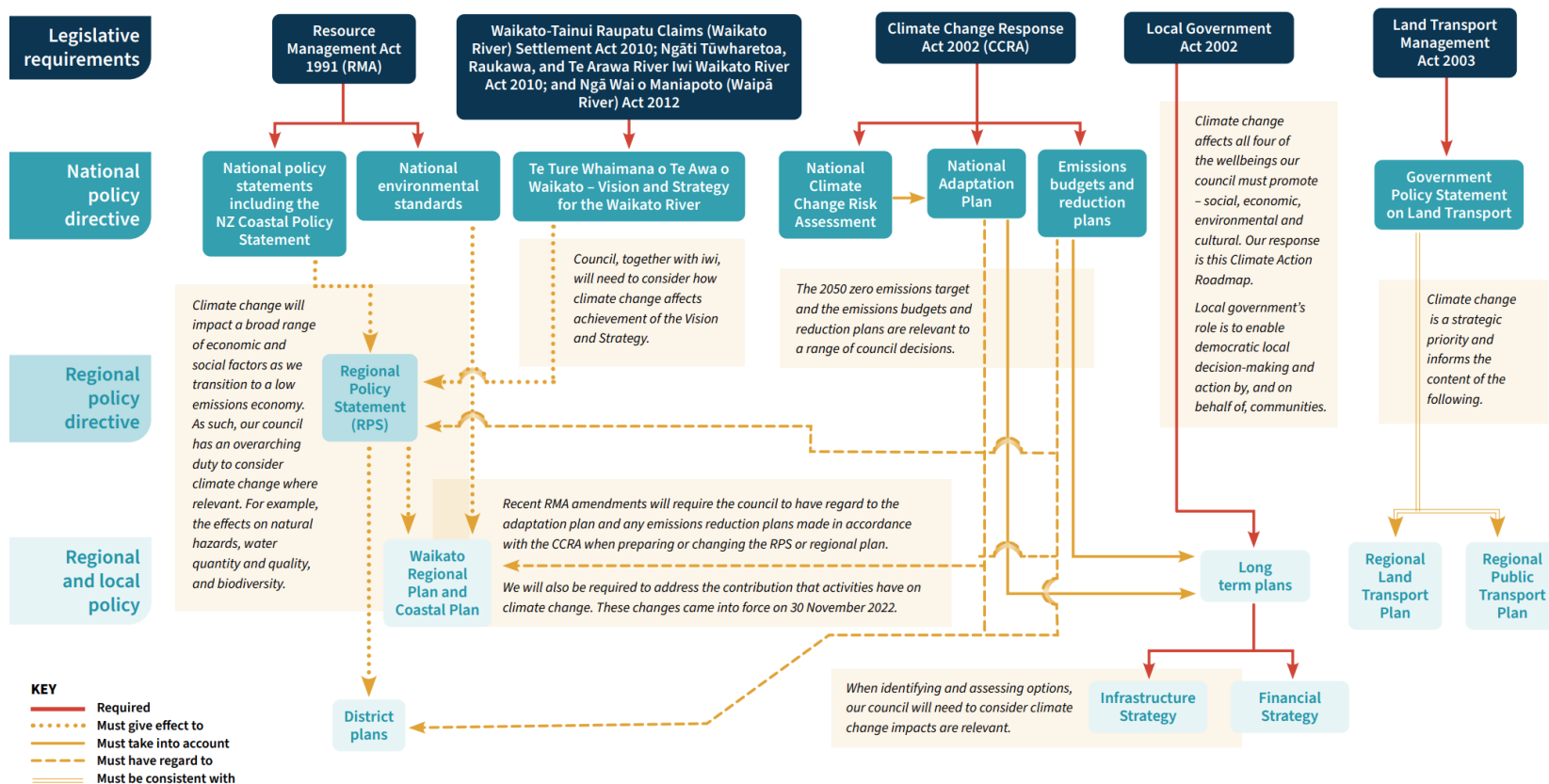


Hononga hapori
Community connections



Whakaheke tukunga
Transition to a low emissions economy

Legislation guiding climate response



Council directions

- Strategic Direction 2023-2025
- Climate implications in all council decision-making
- Climate Action Roadmap
- Climate Change Response Position Statement

Governance and implementation

- Climate Action Committee
- Risk management
- CE KPIs
- Climate Action Roadmap Advisory Group (cross org staff group)
- Climate Action Work Plan

Climate Action Committee activity summary

Speaker examples

- **Kelly Forster** - He Waka Eke Noa – national primary sector climate action partnership and discussion on the work programme and opportunities for collaboration.
- **Paul Winton** – consultant - introduction of the Transport 2030 tool to assist with quantifying the carbon effects of options to reduce transport emissions.
- **David Hall** – AUT - new approaches to financing biodiversity restoration and climate action.
- **Belinda Storey** – consultant - financing mechanisms for coastal retreat/climate leases.
- **Richard Hobbs** - Transpower - renewable energy projects and opportunities for the Waikato region.
- **Lachlan Rule** – MBIE - Just Transitions Unit supporting business and communities during transition to low emissions economy.
- **Mike Jebson and Jane Davidson** - Ministry of Primary Industries - presentation on water availability and security issues for the food and fibre sector and rural communities.

Topic examples

- Development of the council's corporate emissions reduction plan to 2050.
- Inclusion of climate as a strategic priority in 10-year strategy, aligned to UN's Sustainable Development Goals.
- Three yearly update to the Waikato's regional greenhouse gas inventory - identified priority areas for action: agriculture, planting opportunities, transport, transition to renewables.
- Discussion about 'blue carbon' stocks in the Waikato region looking at the current and future issues threatening blue carbon generation and opportunities for management and improved carbon accounting.
- Approval of the approach to incorporating Mātauranga into the Climate Action Roadmap using the Mātauranga Māori project management toolkit.
- Climate Change Investment Strategy.
- Reports on series of stakeholder workshops for transition to a low emissions economy and risk assessments/adaptation.
-and more

waikatoregion.govt.nz

Waikato
REGIONAL COUNCIL
Te Kaunihera ā Rohe o Waikato

Data and evaluate impacts

MITIGATION



Low carbon economy

Reducing carbon emissions and building community resilience will be considerations in all policies, plans and services.

Scientific data and mātauranga Māori will guide all decision making on mitigation and adaptation.

ADAPTATION



Resilient communities



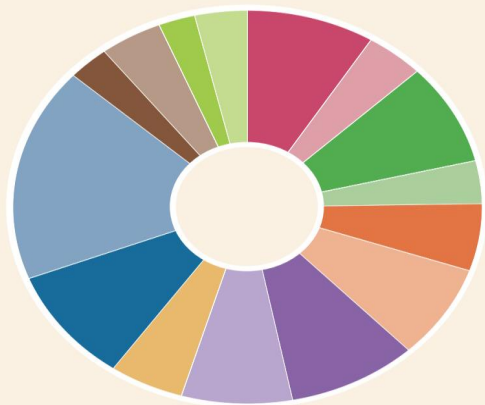
Summary of projected climate changes for the Waikato region

- Warmer. Increased drought.
- Increased rainfall intensity.
- Increasing sea levels. Increased storm surge.
- Increased westerly winds (winter and spring). Increased north easterly winds (late summer and autumn).
- Increased tropical cyclones.






Waikato region emissions

Structure of the Waikato economy
(value added by industry) ²²

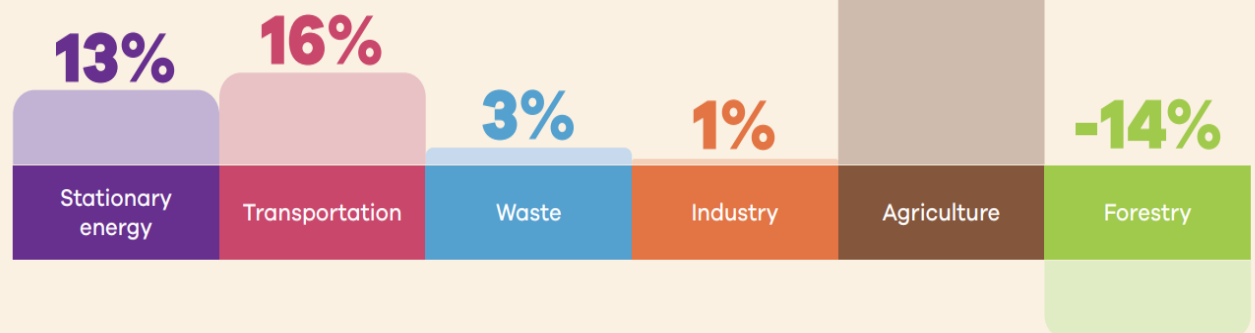


- Agriculture
- Other primary
- Primary manufacturing
- Other manufacturing
- Utilities
- Construction
- Wholesale and retail
- Healthcare and social assistance
- Education and training
- Other services
- Property related services
- Distribution
- Information media, telecoms etc
- Financial and insurance services
- Public admin and safety

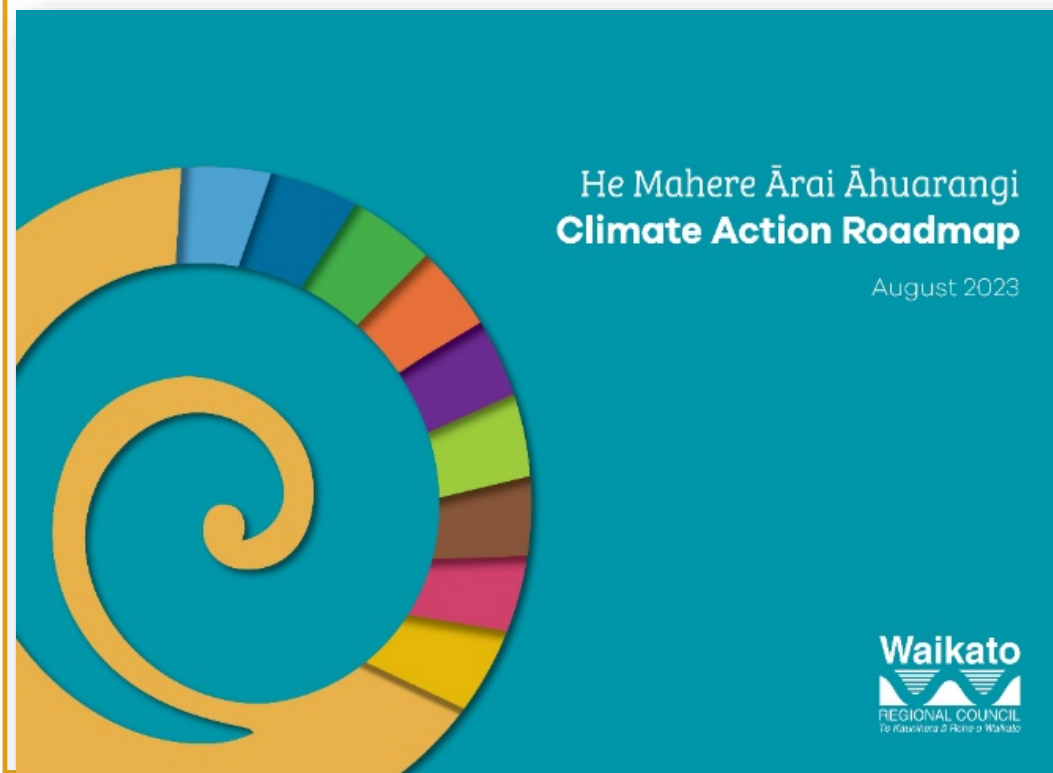
Waikato emissions in 2021/22

	Gross emissions	12,023,719t CO ₂ e
	Less forestry	-1,749,712t CO ₂ e
	Net emissions	10,274,006t CO ₂ e

Note: Due to rounding, numbers presented may not add up precisely to the totals provided.



Climate Action Roadmap



.....what it is

- Evidence-based document
- Integrates climate change responses across all council activities
- Provides guidance and direction for staff on how to integrate climate change into council activities and inform work programme planning and delivery
- Iwi and stakeholders can see our general direction of travel and how we might work together
- Guides investment decision-making for our Long Term Plan 2024-2034

Ngā ara o te mahere **Roadmap pathways**

Wai
Water

Te takutai me te moana
Coastal and marine

Rerenga rauropi, tiakitanga taiao
Biodiversity and biosecurity

Kia aumangea te rohe
Regional resilience

Te pūngao me te ahumahi
Energy and industry

Te whakatupu ngāhere me te whakatō tupu
Afforestation and planting

Ahuwhenua me te whenua haumako
Agriculture and soils

Te hanga tāone me te tūnukutanga
Urban form and transport

Ngā puna pūtea mā te hāpori
Community funding and investment



Water

Goals for success

- Increase regional water security through a multi-stakeholder plan to ensure wellbeing and resilience within defined environmental limits for the next 30 years.
- Put the health of our region's waterbodies and freshwater ecosystems first when making decisions, giving effect to Te Mana o Te Wai and Te Mana o te Awa.
- Leverage our investment in catchment and river restoration work through funding partnerships and community actions, contributing to long term water quality improvements.



Coastal and marine

Goals for success

- Adopt a ki uta ki tai – mountains to sea – approach to consider coastal ecosystems as sensitive receiving environments.
- Work with communities, iwi and hapū to carry out integrated coastal and catchment management planning and restoration activities to protect and enhance coastal and marine ecosystems.
- Partner with communities and iwi and hapū to deliver a future-focused coastal plan



Biodiversity and biosecurity

Goals for success

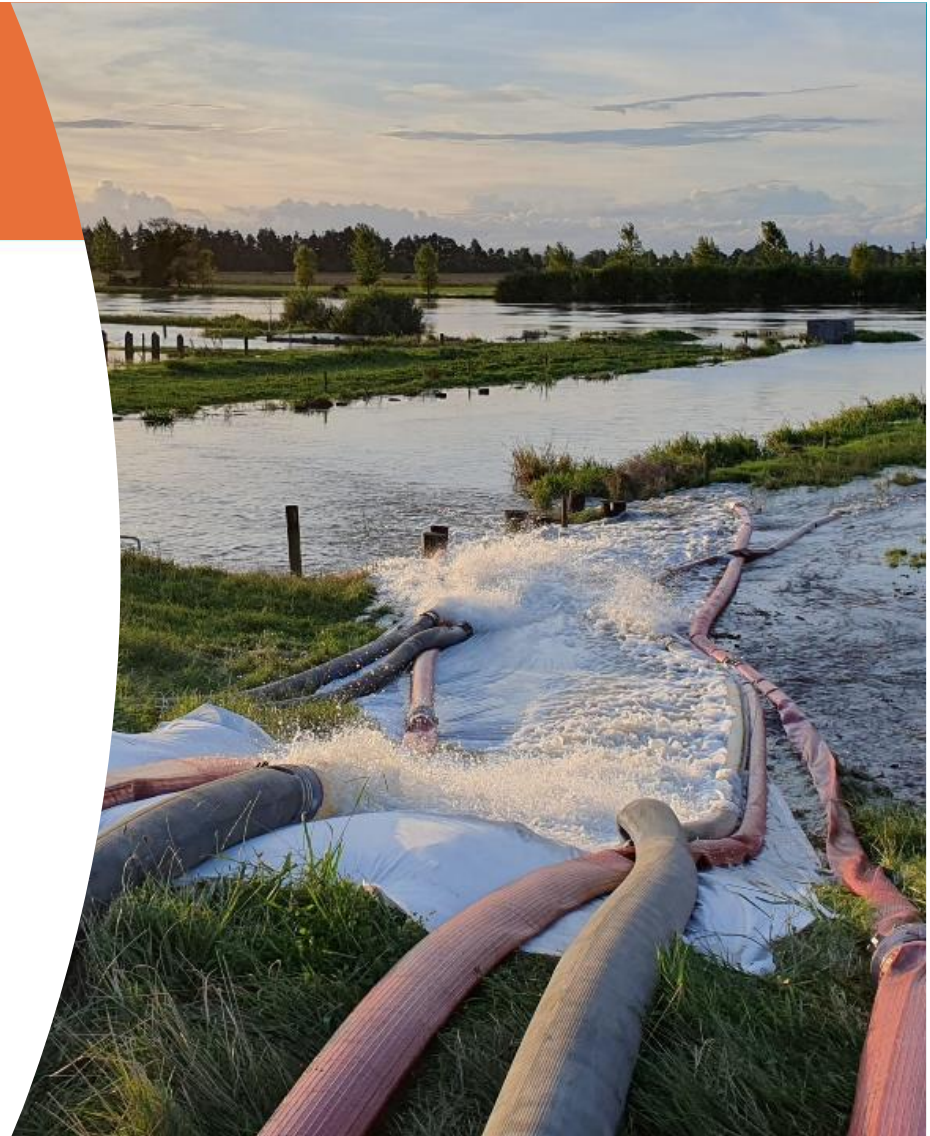
- Work with partner agencies to have an agreed region-wide biodiversity accord in place.
- Progress a prioritised strategic pathway for our region that protects and restores biodiversity out to 2050 and beyond.
- Work with others to protect ecosystems, human health and economic activities through effective pest management.
- Support and empower people to protect and restore the natural environment and taonga species by integrating their efforts with councils and other agencies.



Regional resilience

Goals for success

- Engage communities, iwi and hapū in the development of a sustainable flood management and land drainage infrastructure strategy that considers land uses, working with nature and funding



Energy and industry

Goals for success

- Work with iwi partners and stakeholders to agree options and equitable pathways to help guide industries and communities to reduce use of fossil fuels and increase energy efficiency in our transition to a resilient, low emissions economy.
- Deliver an updated regional energy strategy and facilitate an increase in access to and use of renewable energy.
- Achieve year on year progress toward reducing the council's own corporate emissions, including through our supply chain, consistent with New Zealand's target for net zero greenhouse gas emissions by 2050



Afforestation and habitat restoration

- Promote awareness of the climate risks and landscape and farm-scale transformational changes to land use that will be needed in our region to respond to climate change and supporting land users to adapt.
- Review and update zone and catchment plans with a climate lens to address the key issues identified in this roadmap.
- Incentivise afforestation and planting programmes in priority catchments through targeted rates and in partnership with the Ministry of Primary Industries, Waikato River Authority, Department of Conservation and others. Priority will increasingly be given to native afforestation and planting programmes.
- Investigate opportunities for the council to make use of a voluntary carbon market or incentivise additional planting as a result of such a market.



Agriculture and soils

Goals for success

- Enable the Waikato region's farmers to be national leaders in the adoption of climate smart practices and technologies by aligning our farmer education and support services with those of industry bodies and central government.
- Engage with land users and iwi and hapū in the development of a sustainable flood management and land drainage infrastructure strategy for a changing climate that considers land uses, working with nature and funding



Urban form and transport

Goals for success

- Lead and encourage land-use decisions that shape sustainable, resilient transport networks to ensure communities have affordable access to services, amenities and social life.
- Improve safe, accessible and affordable low emissions passenger transport options for our communities, with a particular focus on frequency and reliability.
- Advocate for infrastructure and investment decisions that support greater climate resilience and a rapid transition to a low carbon freight and distribution network through the upper North Island.



Community funding and investment

- Follow the Principles of Responsible Investment, which embody an internationally accepted framework for investors to manage ESG issues in a manner consistent with improving long-term investment returns
- Continue to work with the council's strategic investment advisor to ensure fund investment processes and practices reflect good industry practice and remain current with emerging opportunities.
- Monitor central government's work to consider whether to extend the application of mandatory climate-related disclosures to ensure our climate reporting and disclosure practices will meet foreseeable future requirements.



Roadmap progress update

- Provide an update on progress against delivery of the roadmap quarterly.
- For the October 2023 to January 2024 period:
 - 109 commitments:
 - 67 are in progress,
 - 13 are in planning,
 - 16 are not started yet,
 - 5 are awaiting central government direction,
 - 1 is completed, and
 - 7 are awaiting updates
 - Interconnectivity
- Link to the Roadmap – [Climate Action Roadmap](#)
- For the February to April 2024 period:
 - 109 commitments:
 - 70 are in progress,
 - 13 are in planning,
 - 14 are not started yet,
 - 7 are awaiting central government direction,
 - 4 is completed, and
 - 1 are awaiting updates

Te Āki Tūroa | Nature+

- Framework using nature-based solutions to offset hard-to-reduce GHG emissions
- Focus on planting native trees and shrubs on council land, provide habitat for native birds, improve water quality and resilience to climate change
- Target to achieve WRC net carbon emissions neutrality by 2050
- Generate carbon credits and, in time, biodiversity credits.



Example planting plan

- Planting up to 9.6 per cent of the council's 2507 hectares of suitable land in native species (between 140 and 240 ha) will achieve carbon neutrality for corporate & public transport services.
 - At comparable/less cost than buying credits
 - Multiple benefits.
- Further, ability to partner with others to address and reduce other indirect sources of emissions, including from drainage infrastructure and supply chain.



CONNECT
WITH
US



@ourwaikato



ourwaikato



/Waikatoregion



waikatoregion.govt.nz