

---

# **Council**

## ***Kaunihera***

### **OPEN MINUTES**

(Long Term Plan Hearings)

---

Minutes of a meeting of the Council held in Council Chamber, Municipal Building, Garden Place, Hamilton and Audio Visual Link on Tuesday 13 April 2021, Wednesday 14 April 2021, Thursday 15 April 2021, Tuesday 20 April 2021, Wednesday 21 April 2021.

#### **PRESENT**

<b>Chairperson</b> <i>Heamana</i>	Mayor P Southgate
<b>Deputy Chairperson</b> <i>Heamana Tuarua</i>	Deputy Mayor G Taylor (via Audio Visual link)
<b>Elected Members</b>	Cr M Bunting Cr M Gallagher (via Audio Visual link) Cr R Hamilton Cr D Macpherson Cr K Naidoo-Rauf (via Audio Visual link) Cr A O'Leary (via Audio Visual link) Cr R Pascoe Cr S Thomson (via Audio Visual link) Cr M van Oosten (via Audio Visual link) Cr E Wilson

<b>In Attendance</b>	Richard Briggs – Chief Executive Lance Vervoort – General Manager Community Sean Hickey - General Manager Strategy and Communications Sean Murray – General Manager Venues, Tourism and Major Events Eeva-Liisa Wright – General Manager Infrastructure Operations Jen Baird – General Manager City Growth Rebecca Whitehead – Unit Director Business and Planning Maria Barrie - Unit Director Parks and Recreation Julie Clausen - Unit Manager Strategy and Corporate Planning Tracey Musty - Financial Controller Greg Carstens - Growth, Funding and Analytics Unit Manager Stafford Hodgson - Programme Manager - Economics and Policy Liz Tuck - Corporate Planning Manager Raewyn Napier – Business Support Coordinator James Clarke – Director of the Mayor's Office
----------------------	---

<b>Governance Team</b>	Becca Brooke – Governance Manager Amy Viggers – Governance Team Leader Carmen Fortin, Narelle Waite and Tyler Gaukrodger – Governance Advisors
------------------------	--

---

*Tame Pokaia opened the meeting with karakia.*

**1. Apologies – *Tono aroha***

**Resolved:** (Mayor Southgate/Cr Wilson)

That the apologies for absence from Cr Forsyth, and for lateness from Cr Naidoo-Rauf are accepted.

**2. Confirmation of Agenda – *Whakatau raarangi take***

**Resolved:** (Mayor Southgate/Deputy Mayor Taylor)

That the agenda is confirmed noting that:

- a) verbal submissions for Item 7 (Long Term Plan, Revenue and Financing Policy, Development Contribution Policy and Growth Funding Policy Verbal Submission Report), Item 8 (Development Contributions Policy Review 2021 – Submissions Summary Report) and Item 9 (Growth Funding Policy Review – Submission Summary Report) are to be taken simultaneously with the reports on these items to be considered/discussed at the conclusion of ALL verbal submissions;
- b) item 10 (Notice of Revocation and Motion – Maaori Wards) will be taken on Thursday, 15 April at 3pm as previously advised. Item 4 (Public Forum) will be taken at the start of this item to accommodate Elected Members of the public wishing to speak, noting that as the subject matter of this item has been discussed and considered by the Council at a recent meeting, speaking time for further public forum speakers on this matter will be limited to 2 minutes per person and may be (at the discretion of the Chairperson) restricted/prioritised to hearing from those presenting views/information not already provided by previous public forum speakers on this matter; and
- c) additional supporting information in relation to Item 10 (Notice of Revocation and Motion – Maaori Wards) was circulated/tabled as part of this item (if required) and will be attached to the minutes of the meeting as **Appendix 1**.

**3. Declarations of Interest – *Tauaakii whaipanga***

No Elected Members of the Council declared a Conflict of Interest.

**4. Confirmation of the Council 2021-31 Long Term Plan Open Minutes of 25 February 2021**

**Resolved:** (Mayor Southgate/Cr Bunting)

That the Council confirm the Open Minutes of the Council Long Term Plan Meeting held on 25<sup>th</sup> February 2021 as a true and correct record.

**5. Chair's Report**

The Chair took the report as read.

**Resolved:** (Mayor Southgate/Deputy Mayor Taylor)

That the Council receives the report.

*The following members of the public spoke to their submissions on the Item 7 (Long Term Plan, Revenue and Financing Policy, Development Contribution Policy and Growth Funding Policy Verbal Submission Report), Item 8 (Development Contributions Policy Review 2021 – Submissions Summary Report) and Item 9 (Growth Funding Policy Review – Submission Summary Report). For further information concerning content and discussion, please refer to the following recording of the meeting:*

[www.youtube.com/user/HamiltonCityCouncil/videos?view](https://www.youtube.com/user/HamiltonCityCouncil/videos?view)

**Greg Foster** (The Salvation Army) – Draft Long Term Plan

Mr Foster spoke of the Salvation Army supply of public housing and development opportunities. He spoke of Development Contribution reductions helping to encourage builds. He responded to questions from Elected Members concerning collaboration with other organisations.

**Geoff Kreegher** (Grey Power) – Draft Long Term Plan

Mr Kreegher spoke to each of his submissions and his concerns regarding the consultation process. He spoke of the increase in infrastructure funding and rates as a result. He noted that he did not agree with the proposed increase in rates and debt to revenue ratio, and stated that Development Contribution remissions are funded by the ratepayer. He responded to questions from Elected Members concerning targeted rates.

**Betty Clough** (Individual) – Draft Long Term Plan

Ms Clough spoke to her submission, the proposed charge of parking in the Hamilton Gardens and Hillcrest traffic congestion. She responded to questions from Elected Members concerning themed garden charges.

**Gerri Pomeroy** (Disabled Person's Assembly) and **Catherine Bang** (Enabling Good Lives Waikato) – Draft Long Term Plan

Ms Pomeroy and Ms Bang spoke to their submissions, outlining that 98% of New Zealand housing is not accessible to the disabled community. They supported Council describing housing for disabled people as a human right. They explained that disabled people struggled to visit other friends' homes due to the home design which lead to them being the most lonely members of society. They requested signage take into account sight disabilities when being designed. They responded to questions from Elected Members concerning disability bathroom access in public places and the removal of barriers to entering public spaces.

*Cr Naidoo Rauf joined the meeting (10:15am) during the above submission.*

**Warren Stace** (Individual) – Draft Long Term Plan

Mr Stace outlined his support for a pedestrian link from the Hamilton Gardens to Hammond Park to provide additional benefit to the local community. He responded to questions from Elected Members concerning commuter parking the central city.

**James Findlay** (Individual) – Draft Long Term Plan

Mr Findlay spoke to his submission, and outlined long term estimates of Hamilton growth over the next 30 years. He spoke to his concerns that there was a lack of choice in the Long Term Plan, and unnecessary infrastructure changes. He responded to questions from Elected Members concerning retrofitting of infrastructure, population growth effecting roading congestion and mode shift opportunities.

*Cr O'Leary left the meeting (10:25am) during the above submission.*

**Askel Bech** (Tamahere Community Centre) – Draft Long Term Plan

Mr Bech spoke to his submission and to collaboration and mutual benefit that Tamahere and Hamilton could have with one another. He responded to questions from Elected Members concerning public service usage and travel over district boundaries and gully restoration.

**John Gallagher** and **Christina Troy** (Gallagher Charitable Trust) – Draft Long Term Plan

Mr Gallagher and Ms Troy spoke to their submission, noting the increasing cost of storm water requirements. They also spoke of commuter parking challenges and future proofing public areas. They responded to question from Elected Members concerning Development Contributions, helping first time home buyers and central city development.

**Troy** (Individual) – Draft Long Term Plan

The presenter spoke to his submission, outlining the restoration of the gully in the Waitawhiriwhiri Character area and the loss of walkable pathways in the Stokes Crescent reserve due to a lack of maintenance in the reserve. He also raised support for an underpass to allow safe crossing of Ulster street, which currently does not have any crossing for 1.5 kilometers. He also recommended an increase in spending on invasive species eradication in gully spaces. He responded to questions from Elected Members concerning eradication of invasive species and Ulster street access.

**The meeting was adjourned from 11.08am to 11.32am.**

**Colin Jones** (Individual) – Draft Long Term Plan

Mr Jones spoke to his submission and noting that in his opinion there were factual inaccuracies in the Long Term Plan. He explained his concerns that the Draft Long Term Plan has taken low population growth modelling into account, while the future proof plan is using a high population growth model. He responded to questions from Elected Members concerning Development Contribution costs effecting rates and the additional steps Council would need to take in order to have enough information to adopt the current Long Term Plan.

**Madelien Scholten and Erin Griffins** (Waikato Screen) – Draft Long Term Plan

Ms Scholten and Ms Griffins spoke to their submission, noting that Waikato does not have a regional film office, and Waikato has not penetrated this billion dollar industry. They outlined the various economic opportunities that are provided as a result of the film industry. They responded to questions from Elected Members concerning setup costs, other funding partners and the film industry.

*Cr O'Leary re-joined the meeting (11:49am) during the above submission.*

**Jessica Weaver** (Individual) – Draft Long Term Plan

Ms Weaver spoke to her submission, requesting that a compostable nappy company be invested in by the Council. She responded to questions from Elected Members concerning other compostable sanitary products and the expansion of the rubbish collection service.

**Jessica Adams** (Individual) – Draft Long Term Plan

Ms Adams spoke to her submission and to how the proposed commuter parking project would impact local residents in high density housing. She also noted that there was a lack of accessibility parking in the central city. She responded to questions from Elected Members concerning accessibility parking opportunities, solutions that Council could provide and additional disability services.

**Mark Servian** (The Riff Raff Public Art Trust) – Draft Long Term Plan

Mr Servian introduced his submission, which was in support of the upgrade to Embassy Park and noted his concerns that the current funding is solely for earthworks to get the park functional. He responded to questions from Elected Members concerning the redevelopment of Embassy Park and incorporating the current theme of the park.

**Peter Southwick** (Waikato Community Lands Trust) – Draft Long Term Plan

Mr Southwick spoke to his submission and noted his thanks on behalf of the Trust for the continued support from the Council. He explained that the Trust would like to continue working with the Council and was seeking further funding for administration purposes. He responded to questions from Elected Members concerning the additional funding requested, partnership with other organizations, socialized housing, submissions to other local councils, Waikato wellbeing projects and policies that the Council could use to enable development.

**The meeting was adjourned from 12.55pm to 1.55pm.**

*Cr Macpherson left the meeting during the above adjournment.*

**Judy Macdonald** (Individual) - Draft Long Term Plan

Ms Macdonald spoke to her submission and her concerns that transport infrastructure was not going to be undertaken soon enough to ensure the safety of the public. She noted that further funding from Central Government was required to meet the requirement for walking and biking infrastructure. She responded to questions from Elected Members concerning Brooklyn Road access, Central Government funding, and access signage for the underpass to the Hamilton Gardens.

**Phil Evans** (Individual) - Draft Long Term Plan

Mr Evans spoke to his submission noting that he felt that there was a demand for more cycling infrastructure and infrastructure that was connected to other cycling paths. He requested that the Council undertake implementation of cycle wands on all cycle lanes in the city to ensure cyclists can use the roads safely. He responded to questions from Elected Members concerning the incidents he had been in while cycling on the roads since the beginning of the year.

**Chris Rollitt** (Individual) - Draft Long Term Plan

Mr Rollitt spoke to his submission noting that he was seeking safe pathways for cyclist on school routes. He requested the Council undertake repairs of the Steele Park Pavilion and not fund the proposal for a seasonal dome over the outdoor pool at Waterworld. He responded to questions from Elected Members concerning the Municipal Pools and Steele Park Pavilion.

**Vanessa Williams and Mike Neale** (Hamilton Central Business Association) - Draft Long Term Plan

Ms Williams outlined their submission noting their support of increasing the quality of the central city and their request for funding to renew the street furniture in Garden Place. They responded to questions from Elected Members concerning charging for commuter parking in the CBD rather than the fringe areas, renewal the street furniture in Garden Place and accessibility for the public to the CBD.

**Tania Simpson and Frank Te Wani** (Gourmet in the Gardens) - Draft Long Term Plan

Ms Simpson spoke to their submission noting that based on feedback that they received that there would be negative impact on Gourmet in the Gardens should the proposal to charge for parking at the gardens was undertaken. They suggested that if there was to be power at the rhododendron lawn there would be increase event opportunity at the Gardens which could be a revenue stream for Council. They responded to questions from Elected Members concerning the cost to install power at the rhododendron lawn and alternative charging options at the Hamilton Gardens.

**Dan Tairaki** (River Riders) - Draft Long Term Plan

Mr Tairaki outlined their submission and the opportunities that would occur if there were more connections of the current cycleways in the city. He noted their support of the development of the jetty at the Hamilton Gardens. He responded to questions from Elected Members concerning the potential economic impact of cycle tourism.

**Tracey Lee** (Individual) - Draft Long Term Plan

Ms Lee spoke to her submission concerning the delay in connecting Borman road and how it would increase congestion in the area due to parents safety concerns. She asked that the Borman Drive extension be undertaken as soon as possible. She responded to questions from Elected Members concerning the deferral of the Borman road Connection project, her safety concerns and how to fund the project.

**Jacobus Eielen** (NZ Suicide Prevention Trust and Families for Justice United) - Draft Long Term Plan  
Mr Eielen spoke to his submissions highlighting the need to balance safety, expansion of libraries in particular archival history and other projects. He responded to questions from Elected Members concerning his support of the proposed creative sector funding trial.

**Katy Cockerton** (Individual) - Draft Long Term Plan

Ms Cockerton spoke to her submission in opposition of paid parking around the fringe of the central city and outlined how it would effect herself, her colleagues and potentially businesses in the area.

**Vicky Haden-Jones and Liz Yorston** (Citizens Advice Bureau) - Draft Long Term Plan

Ms Yorston spoke to their submission which was seeking an annual \$45,000 non-contestable grant for the purpose of building stronger connections with the community and introduction of the mobile unit. They responded to questions from Elected Members concerning a potential unit in Rototuna.

**The meeting was adjourned 3.40pm to 4.00pm.**

**Mary Jensen** (Individual) - Draft Long Term Plan

Ms Jensen spoke to her submission in opposition of inducing paid commuter parking around the fringe of the central city. She responded to questions from Elected Members concerning the potential effect that paid parking on her street would have on residents and visitors in the area and potential alternative options such as resident permits.

**Carla Shailer** (Individual) - Draft Long Term Plan

Ms Shailer spoke to her submission in opposition of paid parking around the fringe of the central city and how it would effect herself and her team. She responded to questions from Elected Members concerning alternative parking or commuting options.

*Cr O'Leary left the meeting (4.14pm) during the above submission.*

**Kimo DeCaires** (Individual) - Draft Long Term Plan

Mr DeCaires spoke to his submission that was seeking funding for a pump track and skate park in Temple View. He responded to questions from Elected Members concerning partnering with the community to fund the project.

**Ash Hewitt** (Individual) - Draft Long Term Plan

Mr Hewitt spoke to his submission concerning paid parking around the fringe of the central city and the potential negative financial impact it would have on families, those that live in the area and the businesses in the area. He also noted his opposition of paying for parking at the Hamilton Gardens. He responded to question from Elected Members concerning alternative parking opportunities and potential financial impact.

Following the above verbal submissions, Elected Members requested the following information and matters be included in the Deliberations report:

- Borman Road Extension Project including impact, or alternative projects that achieve the best outcome for residents;
- cycle bridge connection costs and if they are included in the current project;
- confirmation of the Growth Modelling (NIDEA Low or NIDEA Medium);
- data concerning usage of assets based on geography;
- feasibility of Residential parking technology;
- cost to administer paid parking around the fringe of the central city
- cost to supply power at the Rhododendron Lawn;

- creative sector funding feedback;
- ability to change bus timetable to assist commuters, and timetable for buses to the Gardens;
- timeline to upgrade temple View playground and other amenities;
- timing for upgrade to Steele Park;
- clarity of the scope of underground central city train in the HCBA submission;
- cost of the renewal of the street furniture;
- opportunity to charge for access to the Themed Gardens;
- pedestrian access the Hamilton Gardens;
- additional information concerning walkway and cycleway links, including a potential Ulster street connection;
- consideration towards a investigating introduction of Compostable nappies;
- changing places bathroom charging;
- cost to introduce cycle wards throughout the city;
- feasibility of an annual \$45,000 non-contestable grant to Citizens Advice Bureau or alternative ways to support to Citizens Advice Bureau ;
- Frankton Train Station;
- swap loses in the consultation documents;
- Mobility Parking near accessible homes; and
- confirmation of other Councils funding of the Community Lands trust administration.

*Cr Naidoo-Rauf left the meeting (4.43pm) during the above discussion.*

**The meeting was adjourned from 5.07pm on Tuesday 13 April 2021 until Wednesday 14 April 2021 10.00am.**

*Cr Hamilton left the meeting during the above adjournment.*

*Crs O’Leary, Macpherson and Naidoo-Rauf re-joined the meeting during the above adjournment.*

**The meeting resumed Wednesday 14 April 2021 10.04am.**

**Brian White** (Edwards White Architects) – Development Contribution Policy

Mr White spoke to his submission, and encouraged the Council to provide Development Contribution remissions for developers that maximize parking spaces. He responded to questions from Elected Members concerning ideas for additional parking and ownership of amenities.

**Lucy de Latour** (The Adare Company Limited) – Development Contribution Policy

Ms de Latour spoke to their submission, noting that they did not agree with the increase in Development Contribution costs, believing that developers were paying more than their share of the growth costs in the city. She also noted that the lack of certainty in the current Development Contribution is concerning and that the proposed policy may make future development and growth cells unviable. She responded to questions from Elected Members concerning the cost to ratepayers, Council schedule of assets, consulting with developers in creation of the process, regional infrastructure funding and Peacocke subdivision costs.

**Peter H Bos** (Individual) – Development Contribution Policy and Draft Long Term Plan

Mr Bos spoke to his submission in support of refurbishing and renewing of the Founders Theatre and Municipal pools and of Development Contribution remissions to social housing, and against high rise buildings. He responded to questions from Elected Members concerning other examples of heritage building destruction, restoration of the Municipal Pools and Founder Theatre, and additional costs associated with high rise buildings.

**The meeting was adjourned from 10.41am to 11.00am**

**Carolyn McKenzie** (Individual) – Draft Long Term Plan

Ms McKenzie spoke to her submission, the population age in Hamilton and the strain put on young parents by needing to take public transport. She felt that it would create additional struggle for working mothers if cars were completely taken off the road. She responded to questions from Elected Members concerning commuter parking.

**Sejal and Shalen** (Individuals) – Draft Long Term Plan

The presenters spoke to the submission, the potential impact of changing to angled parking to parallel parking in front of their stores and expressed concern that the reduction in carparks would hurt their business. They responded to questions from Elected Members concerning parking in the area, pedestrian crossings, other business owners and parking changes effecting business.

**Simon Banks** (Individual) – Draft Long Term Plan

Mr Banks spoke to his submission, noting current traffic congestion in the city and how it could be better managed with additional public transport and bike racks on buses. He also spoke in support of creating a plastic recycling facility in Hamilton. He responded to questions from Elected Members concerning regional public transport and alternative transport options.

*Cr O’Leary left the meeting (11.28am) during the above submission.*

**Martin Toop** (Individual) – Draft Long Term Plan

Mr Toop spoke to his submission to the priority five of the Draft Long Term Plan. He outlined his solution to global warming which was to increase the planting of trees and noted that he felt more needs to be done to slow global warming. He recommended that the Council employ additional staff to plant trees throughout the city and the nurseries in the city be expanded to support this project.



**Tony Dixon** (Individual) – Draft Long Term Plan

Mr Dixon spoke to his submission in opposition in the rates increase and the increase in debt. He noted that he felt the previous Long Term Plan should be more closely followed to stick to that plan, and that the \$401 million spend in infrastructure should not be spent on bike lanes. He responded to questions from Elected Members concerning Claudelands bridge bike usage, the Gordonton road intersection upgrade and unfunded micro mobility objectives.

**Sanjay Joshi** (Individual) – Draft Long Term Plan

Mr Joshi spoke to his submission, noting that in his opinion that the lack of quality homes was causing housing unaffordability. He requested an action group be formed with the Mayor, Councillors and Developers to find solutions to housing issues. He also suggested that the Te Huia train services be increased and a faster train introduced.

**Gerald Bailey** (St Aiden's Anglican Church) – Draft Long Term Plan

Mr Bailey spoke to his submission, in particular the western area of the proposed commuter parking around the Claudelands event centre, church and mosque in the area. He felt that charging for parking for people attending the event centre or buildings of faith would not be appropriate and suggested the current commuter parking zone and policy be kept, while extending the area of the two hour free parking area. He responded to questions from Elected Members concerning alternative parking options.

**Marleina Ruka and Anna Casey-Cox** (Te Ohu Whakaita) – Draft Long Term Plan

Ms Ruka and Ms Casey-Cox spoke to their submission, noting that they felt the principles of the draft He Pou Manawa Ora strategy were not reflected in the Draft Long Term Plan. They requested the Council consider funding more community cultural events. They responded to questions from Elected Members concerning the cost of Matariki and other cultural events, commuter parking charges and alternative event funding.

**Charlotte Isaac** (Hamilton Gardens Development Project Governance Group) – Draft Long Term Plan

Ms Isaac spoke to their submissions and recommended that the Council increase funding to the Hamilton Gardens in line with the Hamilton Garden Management Plan that has previously been accepted. She responded to questions from Elected Members concerning entrance charge investigations, previous consideration of paid parking, charging for themed garden creating sponsorship risk, development timeline changes effecting Hamilton Garden budgets and reputational risk.

**Marleina Ruka, Mareline Yoman and Virginia Graham** (The Friends of Hamilton Gardens) – Draft Long Term Plan

Ms Ruka, Ms Yoman and Ms Graham spoke to their submission in opposition of charging for parking at the Hamilton Gardens. They noted that the Friends of Hamilton Gardens believed that it would harm the number of people using the gardens for recreation and exercise purposes. They advised that volunteers and workers at the gardens were concerned that they would be penalised for their place of work. They responded to questions from Elected Members concerning the history of the Friends of the Hamilton Gardens, cost of parking enforcement, removal of targeted rates and the timeline of implementing charges for themed gardens.

**The meeting was adjourned from 12.39pm to 2.01pm.**

*Crs Hamilton and O'Leary re-joined the meeting during the above adjournment.*

**Hamish Anderson** (The Adare Company Limited) – Draft Long Term Plan

Mr Anderson spoke to his submission, noting the collaborative relationship the Adare Company had with Council in the Peacocke growth cell. He responded to questions from Elected Members concerning Development Contribution effect on development prices, Peacocke infrastructure, Council revenue, developer costs, District Plan changes, housing density and the amenities.

**Karen Koti, Era Peihopa and Renee Poihakena Jackson** (Te Papanui Enderly Community Trust) – Draft Long Term Plan

The presenter spoke to their submission, noting their support for cultural values being included in the Long Term Plan and requested additional financial support for the community. They responded to questions from Elected Members concerning Te Papanui Enderly demographics, the Community Trusts operating location refresh, Council's collaboration with iwi, road safety and community self-management.

*Cr Bunting left the meeting (2:41pm) at the conclusion of the above submission.*

**Jane Wood and Scott Tipeny** (Pukete Neighbourhood Association Incorporated)

Ms Wood and Mr Tipeny spoke to their submission, noting their current limited available space. They responded to questions from Elected Members concerning collaboration with schools and the requirement for additional or new facilities.

**Ross Macleod** (Individual) – Draft Long Term Plan

Mr Macleod spoke to his submission in support of additional cycleway connection investment in the Long Term Plan to increase safety on roads. He responded to questions from Elected Members concerning quick solutions that could be implemented.

**Wayne Bates and Sam Wilkinson** (Melville United AFC) – Draft Long Term Plan

Mr Bates and Mr Wilkinson spoke to their submission, noting their request for additional lighting on football fields to enable more community use of the space. They responded to questions from Elected Members concerning additional lighting.

**Darren Mills** (Waikato River Explorer) – Draft Long Term Plan

Mr Mills spoke to his submission and suggested mooring poles be placed at Memorial park instead of the \$1.2 million currently budgeted to build a commercial jetty at the Hamilton Gardens. He responded to questions from Elected Members concerning alternative jetty and mooring options, and the proposal of charging fees for mooring use.

**David Waine** (Chartwell Scout Association) – Draft Long Term Plan

Mr Waine spoke to his submission concerning additional infrastructure investment in the Chartwell area, restoration collaboration and roading network. He responded to questions from Elected Members concerning the development of a gully restoration plan.

**Alison Hitchens** (Individual) – Draft Long Term Plan

Ms Hitchens spoke to his submission to the increase in traffic congestion on Gordonton road in recent years. She recommended additional safety measures for right hand turns along Gordonton road be implemented within the first three years of the Long Term Plan. She responded to questions from Elected Members concerning working with Council staff to implement additional safety measures.

**The meeting was adjourned from 3.27pm to 3.55pm.**

*Cr Pascoe left the meeting during the above adjournment.*

*Cr Bunting re-joined the meeting during the above adjournment.*

**Ron Pengelly** (Individual) - Draft Long Term Plan

Mr Pengelly spoke to his submission and his concern the increase in rates was larger than the increase in the average income of ratepayers. He responded to questions from Elected Members concerning essential Council services and infrastructure investment.

**Thomas Gibbons and Natalia Tropotova** (Waikato Branch of Property Council New Zealand) – Draft Long Term Plan and Development Contribution Policy

Mr Gibbons and Ms Tropotova spoke to their submission, noting the need for additional growth funding, their support of charging for water. They noted that in their opinion those that are driving growth should be pay their fair share of growth costs. They expressed concern that the consenting and costs of building six story buildings may not justify building that high despite the Development Contribution remissions and that businesses had been driven to build warehouses outside of Hamilton due to Development Contribution prices. They responded to questions from Elected Members concerning the Infrastructure Funding and Financing Act, adjustment of rates over years, Development Contribution increases in comparison to increased land value, increased infrastructure usage as a result of residential growth, and privatized infrastructure risks and opportunities.

**Marie Gordon, Mary Ellen and Lale Ieremia** (Hamilton Girls' High School) – Draft Long Term Plan

Ms Gordon, Ms Ellen and Mr Ieremia spoke to their submission, noting that their current facilities were inadequate to provide proper physical education. They outlines the redevelopment of the school's grounds that may occur to allow for the school to grow with the city and integrate with the West town belt. They responded to questions from Elected Members concerning collaboration with Hamilton Boys High School, public access to recreation space on school grounds, collaboration with the Ministry of Education, timelines for development and funding by the Ministry of Education.

*Cr van Oosten left the meeting (4.46pm) during the above submission.*

*Cr Naidoo-Rauf left the meeting (4.51pm) during the above submission.*

*Cr O'Leary left the meeting (4.59pm) at the conclusion of the above submission.*

**Jeremy Mayall** (Creative Waikato) – Draft Long Term Plan

Mr Mayall spoke to his submission, in support of the Councils commitment to funding the arts and explained how the arts increased community wellbeing and made Hamilton a place people want to move to and which boosted the economy. He spoke of the Hamilton Arts navigator framework, which could be used as a tool to create a thriving cultural and artistic centre. He responded to questions from Elected Members concerning collaboration with local arts agencies.

*Cr Macpherson left the meeting (5.03pm) during the above submission.*

**Ross Kennedy and Grant Taylor** (Waikato Guild of Woodworkers) – Draft Long Term Plan

Mr Kennedy and Mr Taylor spoke to their submission in support of Council funding Art projects. They expressed gratitude to Hamilton's arts and accessibility objectives, noting these help improve mental health. They responded to questions from Elected Members concerning cost of upgrading arts centres.

**Catherine Smith** (Friends of the Waikato Museum of Art and History Inc.) – Draft Long Term Plan

Ms Smith spoke to their submission, noting support for the proposed upgrades to the Museum and the positive outcomes that they would create such as increased visibility. She responded to questions from Elected Members concerning the addition of an entrance to museum from the river side.

*Cr Naidoo-Rauf re-joined the meeting (5.15pm) during the above submission.*

**Linda Clay** (Individual) – Draft Long Term Plan

Ms Clay spoke to her submission, expressing concern for the increase in traffic in Moonlight Drive. She noted that she felt the road was not fit for purpose and that an upgrade was required. She responded to question from Elected Members concerning the road quality, material and additional roundabout changes.

**Kelli Pike** (Individual) – Draft Long Term Plan

Ms Pike spoke to her submission in support of cycleway funding and historical site funding. She noted of the opportunity for Beale Cottage to be converted into community meeting space or museum. She responded to questions from Elected Members concerning working on setting up events with Council, signage of gullies, using the Frankton restoration plan and cycleway locations.

**The meeting was adjourned 5.30pm on Wednesday 14 April 2021 until Thursday 15 April 2021 9.30am.**

*Cr Bunting left the meeting during the above adjournment.*

*Crs van Oosten, Pascoe, O'Leary and Macpherson re-joined the meeting during the above adjournment.*

**The meeting resumed Thursday 15 April 2021 at 9.34pm.**

**Peter Finlay** (Individual) - Draft Long Term Plan, Development Contribution Policy, Growth and Funding Policy, and Revenue and Financing Policy.

Mr Findlay spoke to his submissions on the Draft Long Term Plan, Development Contribution Policy, Growth and Funding Policy, and Revenue and Financing Policy. He responded to questions from Elected Members concerning debt to revenue ratio, the NIDEA growth model, the proposed Government Compliance Targeted rate and a transport master plan.

**Robert Dol** (Northern United Sports Club) – Draft Long Term Plan

Mr Dol spoke to their submission noting the success of Kirokiro Park. He requested the completion of the Kirokiro Park development as per the master plan in particular the clubhouse. He responded to questions from Elected Members concerning Council partnering with the Northern United Sports Club to fund the development of a clubhouse and its potential design.

**Jennifer Palmer, Simon Perry and Sarah Ulmer** (Perry Charitable Trust) – Draft Long Term Plan

Mr Perry spoke to their submission and the various projects that they supported in the Draft Long Term Plan. They outlined the Te Awa Lakes Leisure and Recreation Park Development, how they would like to partner with Council and requested a \$10 million contribution to the development. They responded to questions from Elected Members concerning the potential council contribution, bus access, the development timeline and how the development would enable it to be a year round attraction.

**Tony McLauchlan and Bill Mitchelmore** (Chedworth Properties, Brymer Heights, Empire Corporation Limited, Tristar Group Waimana Holdings, Porter Properties and Bill Mitchelmore) – Draft Long Term Plan and Development Contribution Policy

Mr McLauchlan and Mr Mitchelmore spoke to the various submissions to the Draft Long Term Plan and Development Contribution Policy. They responded to questions from Elected Members concerning points raised in their verbal and written submissions.

**The meeting was adjourned 11.22am to 11.37am.**

*Cr Bunting re-joined the meeting during the above adjournment.*

**Leonard Gardner** (Foster Constructions Group and Hamilton Gardens Development Trust) – Draft Long Term Plan, Development Contributions Policy, Growth and Funding Policy

Mr Gardener spoke to his submissions and congratulated the Council on proposed five long Term Plan Priorities. He responded to questions from Elected Members concerning charging for access to the Themed Gardens once the Visitor Centre was complete and points raised in the submission to the proposed Development Contributions Policy.

**Jeane Derome** (Individual) - Draft Long Term Plan

Ms Derome spoke to her proposal to make Hamilton the city of sustainable innovation and responded to questions from Elected Members concerning the scope of the project.

**Margaret Southgate** (Individual) - Draft Long Term Plan

Ms Southgate spoke to her submission and requested that the Council partner with the Hamilton East Community to install a half basketball court at Steele Park. She responded to questions from Elected Members concerning the proposed location of a half court.

**Nickie-Leigh Heta** (Individual) - Draft Long Term Plan

Ms Heta spoke to her submission in particular her support for community houses and their related projects. She responded to questions from Elected Members concerning funding community houses and paid commuter parking.

**Marilyn Yeoman and Gail Pittaway** (Garden History Research) - Draft Long Term Plan

Ms Yeoman spoke to their submission noting that in their opinion charging for the parking at the Gardens would deter visitors to the Hamilton Gardens and overall have a negative impact.

**Vicki Ravlich-Horan** (Waikato Food Inc) - Draft Long Term Plan

Ms Ravlich-Horan spoke to their submission, thanked the Council for the funding they had previously received and asked that the support continued. She responded to questions from Elected Members concerning funding from other Councils and alternative funding options.

**Niall Baker** (Individual) - Draft Long Term Plan

Mr Baker spoke to his submission, the consultation process and noted his support of many of the projects. He responded to questions from Elected Members concerning walkway signage and the proposed pedestrian bridge.

*Cr O'Leary left the meeting (12.44pm) during the above submission.*

**Jason Wade** (Clarence Street Theatre Trust) - Draft Long Term Plan

Mr Wade spoke to their submission, requesting capital funding form community facilities and equipment. He responded to questions from Elected Members concerning options for funding equipment, and a proposed land levy.

Following the above verbal submissions, Elected Members requested the following information and matters be included in the Deliberations report:

- the proposed Government Compliance Targeted rate;
- 'quick wins' concerning feedback on the Development Contributions Policy;
- Steele Park Pavilion development including the proposed half basketball court;
- clarity of landscaping and ongoing maintenance of berms expectations;
- Community Theatre Land Levy;
- charging for Hamilton Gardens Themed Gardens once the Visitor Centre is completed, the timeline and impact;
- analysis of where local roading improvements have been undertaken;
- consultation with 'David's corner' shops in relation to school links;
- cost to 'hit sticks' along Pukatehea road and Gordonton Road;
- Development Contribution remission for Parklets;
- the theatre sound equipment funding proposal;
- clarity of the assumed verses actual demand Development Contribution credits;
- DC Cost allocation issue and DIA guidelines raised by Mitchmore;
- funding for proposals raised by the community during consultation;
- consideration towards overnight moorings an rephased jetty spend;
- Hamilton East Plan, what has been achieved verses what is still to be completed;
- previous agreement with Clarence Street Theatre and other community Theatres;
- Community Housing Funding opportunities in the areas of high deprivation and revitalisation of the houses;
- schedule of assets issues raised in relation to Development Contributions;
- funding of a Matariki event;
- lighting of soccer pitches, timeline and funding;

- Kingitanga exhibition timeline; and
- impediments to rebranding the Museum.

*Cr Wilson left the meeting (1.04pm) during the above discussion.*

*Cr Naidoo-Rauf left the meeting (1.07pm) during the above discussion.*

**The meeting was adjourned 1.29pm to 3.01pm.**

*Crs Wilson, O’Leary and Naidoo-Rauf re-joined the meeting during the above adjournment.*

Following the above adjournment the meeting resumed with Item 4 (Public Forum) and Item 10 (Notice of Revocation and Motion – Maaori Wards) prior to proceeding with the remaining Long Term Plan hearings to accommodate members of the public in attendance for these two items.

*The meeting resumed with a Karakia from Tame Pokaia and a mihi/welcome from Mayor Southgate. A response was given by Sonny Karena.*

**4. Public Forum – Aatea korero**

**Benjamin Doyle** spoke to item 10 (Notice of Revocation and Motion - Maaori Wards) in support of Maaori Wards and partnership. He felt that the introduction of Maaori Wards would enable the voices of Hamilton’s to be heard and could only have a positive outcome.

**Joe Trinder** spoke to item (Notice of Revocation and Motion - Maaori Wards) support of Maaori Wards and to the history of Hamilton.

**Dr Jacquelyn Elkington** spoke in support of item 10 (Notice of Revocation and Motion - Maaori Wards) noting the history of Maaori land ownership and representation.

**Brett Erceg** spoke to item 10 (Notice of Revocation and Motion - Maaori Wards) requesting full consultation with the Community on Maaori wards.

**Malaina Huaki** spoke to item 10 (Notice of Revocation and Motion - Maaori Wards) in support of Maaori Wards.

**Wiremu Puke and Hekeiterangi Broadhurst** spoke to item 10 (Notice of Revocation and Motion - Maaori Wards) in support of Maaori Wards. They suggested ward boundaries based on ancestral landmarks of importance, and requested Elected Members consider the next generation when making their decision today.

**Dr Rawiri Waretini-Karena** spoke to item 10 (Notice of Revocation and Motion - Maaori Wards) in support of Maaori Wards noting the principles of Te Tiriti o Waitangi and the requirement to partner with Maaori.

**Alvina Edwards** spoke to item 10 (Notice of Revocation and Motion - Maaori Wards) in support of Maaori Wards noting requirements of partnership outlined in the Treaty of Waitangi.

**Sandra Puru** spoke to item 10 (Notice of Revocation and Motion - Maaori Wards) in support of Maaori Wards.

**Daphne Bell** spoke to item 10 (Notice of Revocation and Motion - Maaori Wards) in support of Maaori Wards and outlined her experience when learning about the history of New Zealand.

**Rittie Kee** spoke to item 10 (Notice of Revocation and Motion - Maaori Wards) in support of Maaori Wards noting benefits it would have on future generations.

**Donna Pokere-Phillips** spoke to item 10 (Notice of Revocation and Motion - Maaori Wards) and outlined Te Tiriti o Waitangi, case law, and the need for partnership.

**Sakaio Te Whaiti-Smith** spoke to item 10 (Notice of Revocation and Motion - Maaori Wards) in support of Maaori Wards and presented a petition to the Council concerning street signs in Kirikiriroa that did not reflect integrity. He requested Council consider equal partnership at the Council table.

**Horiana Henderson** spoke to item 10 (Notice of Revocation and Motion - Maaori Wards) in support of Maaori Wards and outlined how it would meet the provision in the Local Government Act.

**Hana Maipi Rawhiti-Clarke** spoke to item 10 (Notice of Revocation and Motion - Maaori Wards) in support of Maaori Wards and to her disappointment of the decision made on 1 April 2021.

**Sandra Stoud** spoke to item 10 (Notice of Revocation and Motion - Maaori Wards) in support of Maaori Wards.

**Linda Te Aho (Tainui and Ngaati Korokii Kahukura Representative)** spoke to item 10 (Notice of Revocation and Motion - Maaori Wards) noting that Maangai Maaori were a compromise in the past but that now it was the time to introduce Maaori wards.

**Andrea Elliott-Hohepa (Te Runanga Representative)** spoke to item 10 (Notice of Revocation and Motion - Maaori Wards) outlining the support of Maaori Wards and the success of Maangai Maaori. She suggested that the previously debated option 3 of Maaori Wards and Maangai Maaori should be adopted.

**Warren Williams (Ngaati Maahanga Representative)** spoke to item 10 (Notice of Revocation and Motion - Maaori Wards) in support of Maaori Wards. He noted the feedback from Ngaati Maahanga was that Maaori wards should be approved and that Maangi Maaori continue to be Elected Members of Councils Committees.

**Sheryle and Sonny Matenga (Ngaati Tamainupo Representative)** spoke to item 10 (Notice of Revocation and Motion - Maaori Wards) in support of Maaori Wards. They noted the importance of maaori sit at the decision making table and their support of points raised by previous speakers.

**Eric Pene (Ngaati Wairere Representative)** spoke to item 10 (Notice of Revocation and Motion - Maaori Wards) in support of Maaori Wards being established under today's Council, their disappointment of the previous decision and the requirement for partnership.

**Hone Thompson and Mokoro Gillett (Ngaati Hauaa)** spoke to item 10 (Notice of Revocation and Motion - Maaori Wards) in support of Maaori Wards and the historic moment for change.



Written submission from Dave Colquhoun (Chairperson Commission for Justice, Peace, and Aroha), Brett Erceg, and Stevie Sansfield were circulated to Elected Members prior to the meeting and attached to the minutes as **Appendix 2**.

**The meeting was adjourned 4.45pm to 5.00pm.**

**10. Notice of Revocation and Motion - Maaori Wards**

Mayor Southgate spoke to the notice of Motion and outlined a proposed change to the wording of the notice of motion. Staff responded to questions Elected Members concerning the proposed consultation process and timeline.

**Resolved:** (Mayor Southgate/Cr Hamilton)

That the Council **revokes** the following resolution pertaining to consideration of Maaori Wards and Maaori Representation that was previously approved at the 1 April 2021 Extraordinary Council meeting:

*That the Council:*

- a) approves to continue its commitment to strengthen meaningful representation and participation of Maaori across all levels of Council activity (including consideration of Maaori wards, strengthening the role of Maangai Maaori and/or other means) following the adoption of He Pou Manawa Ora and consistent with the direction of the strategy; and*
- b) commits to maintain collaboration and engagement with iwi and the community throughout the process.*

**Deputy Mayor Taylor and Cr Pascoe Dissenting.**

**Resolved:** (Mayor Southgate/Cr Hamilton)

That the Council:

- a) considers the establishment of Maaori Wards for the 2022-25 triennium, **with** wider community engagement to take place from 16 April 2021 until 10 May 2021;
- b) approves that an Extraordinary Council meeting will be convened for the purpose of consideration of the consultation in a) above, and deciding on the final outcome of the proposal in a) above on 19 May 2021; and
- c) notes that a final decision on establishing Maaori wards for the 2022-25 triennium must be made prior to 21 May 2021.

**Deputy Mayor Taylor and Cr Pascoe Dissenting.**

*The meeting was adjourned with a Karakia Whakamutunga.*

**The meeting was adjourned 6.01pm Thursday 15 April 2021 until Tuesday 20 April 2021 9.30am.**

*Cr O'Leary left the meeting during the above adjournment.*

**The meeting resumed Tuesday 20 April 2021 at 9.34am with Long Term Plan hearings.**

**Adrienne Grant** (Waikato Enviroschools, Waikato Regional Council) – Draft Long Term Plan  
Ms Grant spoke to her submission, noting her request for Council to take rubbish from Hamilton schools to decrease their carbon footprint. She spoke in support of alternative transport options, gully restoration and school work on environmental restoration initiatives. She responded to questions from Elected Members concerning schools recycling and the amount generated by schools.

**Chris McLay and Russ Rimmington** (Waikato Regional Council) – Draft Long Term Plan  
Mr McLay and Mr Rimmington spoke to their submission noting their support for commuter parking charges, an additional transport hub to be created at Rototuna village, increased infrastructure initiatives and additional funding for housing. They responded to questions from Elected Members concerning bus stop locations, cat de-sexing funding, additional public transport funding, working with Waka Kotahi to fund alternative transport, public transport usage, the timeline of infrastructure development and biodiversity initiatives.

**Simon Leadley** (TWoTA Trust) – Draft Long Term Plan  
Mr Leadley spoke to their submission and to the Fairfield hall development that was scheduled to take place. He outlined of the support that the hall could provide to help alleviate social economic struggles of the neighbouring communities, including providing music, arts, sports, and health services. He responded to questions from Elected Members concerning the timeline for redevelopment and confirmed that TWoTA Trust moving into the new building.

**Maurine Pierce, Alison Young and Tina Boyd** (Kiwi Property and Stride Investment Management Ltd) – Draft Long Term Plan  
Ms Arthur-Young outlined their submission, noting their opposition to the introduction of a Government Compliance targeted rate and the feedback from tenants that they may need to reduce staff or leave the region in response to the increase in rates. They responded to questions from Elected Members concerning targeted rates, Three Waters compliance rates, previous decreases in rates, Local Government Act requirements and changes to targeted rate charges per year.

*Cr Leary re-joined the meeting (10:29am) during the above submission.*

**Geoff Booth, Emma, Cooper, Tyla and Flynn** (Puketaha School) – Draft Long Term Plan  
Mr Booth and students from Puketaha School spoke to their submission, noting that the current Gordonton and Puketaha intersection was unsafe and suggested a roundabout would decrease congestion and make the road safer. They responded to questions from Elected Members concerning users of this intersection and confirmed that they would make submissions the other Councils Long Term Plans.

**Jay Komene and Darran Walker** (Waikato Bomb Club)  
Mr Walker and Mr Komene spoke to their submission, noting the current danger of walking down to the Wellington beach and requested installation of a stairway and safety measures at the site such as floatation devices. They responded to questions from Elected Members concerning additional swimming facilities, Wellington beach upgrades, water safety measures and bombing facilities.

**Patricia O'Neill** (Individual) – Draft Long Term Plan  
Ms O'Neill spoke to her submission in opposition to the proposal to charge for parking at the Hamilton Gardens. She expressed concern that lower earning ratepayers would not be able to justify attending the gardens and other would avoid it if the proposed parking charge was introduced. She responded to questions from Elected Members concerning charging non-residents for access to the themed gardens and alternative transport to the gardens.

**The meeting was adjourned from 11:16am to 11:33am**

**Richard Wymer** (Individual) – Draft Long Term Plan

Mr Wymer spoke to his submission in support of private businesses being able to use the river for commercial purposes, charging for entry to the gardens and the introduction of bus only lanes. He responded to questions from Elected Members concerning bus priority lights.

**Annabel Walsh** (Rototuna Senior High School) – Draft Long Term Plan

Ms Walsh spoke to their submission noting that infrastructure in Rototuna could not keep up with demand and needed to be upgraded sooner. She suggested that the proposed parking charge be replaced by a charge to enter the themed gardens. She responded to questions from Elected Members concerning alternative transport to schools and road safety.

**Troy Radovancich** (Rad Surveying Ltd) – Draft Long Term Plan

Mr Radovancich outlined his submission and noted that in his opinion that the Council needed to bring additional land into the city by shifting boundaries and rezoning land for residential housing. He responded to questions from Elected Members concerning affordability of housing, infrastructure cost and development.

**Peter Dornauf** (Individual) – Draft Long Term Plan

Mr Dornauf spoke to his submission and concern that there was a person living on cemetery grounds. He responded to questions from Elected Members regarding his concerns.

**Russelle Knaap** (Individual) – Draft Long Term Plan

Ms Knaap spoke to her submission, noting that her opinion the proposed increase of rates was affordable and would require people to decrease their quality of living to afford the increases. She also noted her opposition to the Peacocke east-west arterial route due to the land quality making it unsuitable to build on. She spoke of the lack of engineering reports looking into this issue. She responded to questions from Elected Members concerning geotechnical reports on the location of the Peacocke east-west arterial route.

**Mark** (Individual) – Draft Long Term Plan

The presenter spoke to his submission, noting his disapproval of the increase in rates and debt proposed in the Draft Long Term Plan and suggested that the Council have decreased both debt and rates had it taken advantage of decreasing interest rates. He responded to questions from Elected Members concerning fixed interest rates.

**Roger Stratford** (Individual) – Draft Long Term Plan

Mr Stratford spoke to his submission in opposition to the increase in rates and noted that gully restoration should instead be reduced to gully management.

**Holly Snape** (Community Waikato)

Ms Snape spoke to her submission, noting the degeneration of community facilities reducing public morale. She spoke in favour of alternate transport initiatives and Maaori wards.

**Robin Hood** (Individual) – Draft Long Term Plan

Mr Hood spoke to his submission noting that he was in to proposal to cover the outdoor pool with a dome. He suggested instead that the Municipal Pools be regenerated instead.

*Cr Hamilton left the meeting (12:40pm) during the above submission.*

**Susan Woodhouse** (Individual) – Draft Long Term Plan

Ms Woodhouse spoke to her submission, the lido pool dome and instead suggested that the money to be used to renew the Municipal pools which would create a world first 'water quarter' with linkage to the river. She responded to questions from Elected Members concerning cost of regeneration of the Municipal pools and pool heating.

**Ursula Carlson** (Individual) – Draft Long Term Plan

Ms Carlson spoke against the proposed commuter parking charges. She responded to questions from Elected Members concerning exemptions for residents and commuter charging locations.

**Paul Bradley** (Hamilton Arts Trust)

Mr Bradley spoke to their submission in support of an increase in funding to the arts community, and requested the proposed fund be increased to \$1 million. He outlined the positive reputation that the arts provides, and explained that the fund would support the four wellbeings and Hamilton's economy. He responded to questions from Elected Members concerning national and private arts funding.

**Nancy Caiger** (Individual) – Draft Long Term Plan

Ms Caiger spoke to her submission, noting her support in the increase in arts funding. She outlined a proposal for a Arts endowment fund to be created to support the Arts in the future. She responded to questions from Elected Members concerning the depreciating value of funding the Hamilton Gardens.

*Cr Naidoo-Rauf left the meeting (1:07pm) during the above submission.*

**The meeting was adjourned from 1.11pm to 2.03pm.**

*Deputy Mayor Taylor, Crs Macpherson and Bunting left the meeting during the above adjournment.*

**Dame Peggy Koopman-Boyden** (Hamilton Age Friendly Steering Group)

Dame Koopman-Boyden spoke to their submission noting Hamilton's Age-Friendly City honour, older-person representation in the Long Term Plan, the older-person population, population diversity, the cycling and walking bridge, Hamilton City Gardens, parking, and city parks. She responded to questions from Elected Members concerning micro-mobility pathways and age-friendly cities.

*Cr Bunting re-joined the meeting (2.11pm) during the above submission.*

*Deputy Mayor Taylor and Cr Hamilton re-joined the meeting (2.14pm) during the above submission.*

*Cr Naidoo-Rauf re-joined the meeting (2.16pm) during the above submission.*

*Cr Macpherson re-joined the meeting (2.18pm) during the above submission.*

**Jason Dawson** (Hamilton & Waikato Tourism)

Mr Dawson spoke to their submission in support of the walking and cycling bridge, the Boat Jetty at Hamilton Gardens, and entry charges for the themed Hamilton Gardens. He responded to questions from Elected Members concerning Hamilton Gardens parking and entry charges.

**April Johnson and Catherine Trezona** (Life Unlimited)

Ms Johnson and Ms Trezona spoke their submission noting the need for a greater focus on disability support, training opportunities, and libraries. They responded to questions from Elected Members concerning workplace accessibility and mode-shift.

**Rawiri Bidois and Sonny Karena (THaWK)**

Mr Bidois spoke to their submission noting their support for historical storytelling across the city including the Hamilton Gardens and Horsham Downs, the walking and cycling bridge, and their opposition to commuter parking charges. They responded to questions from Elected Members concerning historical storytelling.

**Anna Casey-Cox and Te Kopa King (Kirikiriroa Restoration Forum)**

Ms Casey-Cox and Mr King spoke to their submission in particular environmental and gully restoration, mana whenua representation and historical storytelling. They responded to questions from Elected Members concerning predator free Waiwhakareke, storytelling at Paa and Urupaa sites.

**Anna Casey Cox and Wiremu Puke (RESTORE)**

Ms Casey-Cox and Mr Puke spoke to their submission noting Hamilton's historical ecology and wetlands, and reintroduction of native wildlife. They responded to questions from Elected Members concerning constructing wetlands, and wildlife reintroduction.

**The meeting adjourned from 3.24pm to 3.38pm.**

*Deputy Mayor Taylor and Crs Bunting and Hamilton left the meeting during the above adjournment.*

**Jo Wrigley (Go Eco)**

Ms Wrigley spoke to their submission in particular carbon emissions, climate change, environmental impact of roading and stormwater, and their support for multi-modal transport, micro-mobility pathways, and gully restoration. She responded to questions from Elected Members concerning climate change.

**Brian Main (Individual) – Draft Long Term Plan**

Mr Main spoke to his submissions noting the estimated Long Term Plan budget and Hamilton Gardens parking charges. He responded to questions from Elected Members concerning alternative Hamilton Garden's revenue opportunities.

*Cr Hamilton re-joined the meeting (3.51pm) during the above submission.*

*Deputy Mayor Taylor re-joined the meeting (3.54pm) during the above submission.*

**Bruce Clarkson (Individual) – Draft Long Term Plan**

Mr Clarkson spoke to his submission in favour of the restoration of gullies noting the bio-diversity decline in the city. He suggested adaptive management processes, prioritisation of gully projects, and partnership with gully groups. He responded to questions from Elected Members concerning measuring bio-diversity improvements.

*Cr Bunting re-joined the meeting (3.57pm) during the above submission.*

**Tim Macindoe (Individual) – Draft Long Term Plan**

Mr Macindoe spoke to his submission noting his support for safer roads and improvement of intersections. He responded to questions from Elected Members concerning roundabouts, public feedback, and costing.

**Roderick Aldridge (Individual) – Draft Long Term Plan**

Mr Aldridge spoke to his submission, in particular his support for infrastructure.

*Cr O'Leary left the meeting (4.19pm) during the above submission.*

**Timi Barabas** (Individual) – Draft Long Term Plan

Ms Barabas spoke to her submission noting her support for climate change action, the prioritisation of cycle and walkways development, gully restoration and public transport. She responded to questions from Elected Members concerning public transport.

**Tim Young and Peter van Hooven** (Individuals) – Draft Long Term Plan

Mr Young and Mr van Hooven spoke to their submission noting the need for inclusive playgrounds and accessibility, accessibility data to indicate areas of need, and development contributions. They responded to questions from Elected Members concerning the Magical Bridge Playground.

**Maurice Flynn** (CCS Disability Action)

Mr Flynn spoke to his submission in support of multi-mode transport initiatives including micro-mobility pathways, and public transport upgrades including accessibility improvements of bus stops. He responded to questions from Elected Members concerning accessible housing.

**Blair McAlister** (Individual) – Draft Long Term Plan

Mr McAlister spoke to his submission in opposition to the cost of Long Term Plan budget, Council debt, and the innovating streets project. He responded to questions from Elected Members concerning inter-generational borrowing.

**Jamie Strange** (Individual) – Draft Long Term Plan

Mr Strange spoke to his submission in support of infrastructure to support population growth including development of northern corridors, Eastern Pathways School Link, lighting sport fields and the pedestrian bridge proposal. He responded to questions from Elected Members concerning rating increases, Ministry of Education facilities and transport funding, Central Government funding for Hamilton City Council's multi-modal projects, the housing acceleration fund and roading budgets.

*Cr Bunting left the meeting (5.06pm) during the above submission.*

*Cr Naidoo-Rauf left the meeting (5.07pm) during the above submission.*

**Cliff Thomas** (Waikato Historical Society)

Mr Thomas spoke to their submission and requested the Council fund the development of a new book detailing Hamilton's history. He responded to questions from Elected Members concerning the wider history of Kirikiriroa, costings and digital copies.

**The meeting adjourned from 5.19pm Tuesday 20 April 2021 to 9.30am Wednesday 21 April 2021.**

*Crs Pascoe and Macpherson left the meeting during the above adjournment.*

*Crs Bunting and Naidoo-Rauf re-joined the meeting during the above adjournment.*

**The meeting resumed 9.30am Wednesday 21 April 2021.**

**Christina Campbell and Isabell Campbell** (Individual) – Draft Long Term Plan

Ms Campbell and Ms Campbell spoke to their submission in opposition to the demolition of the Municipal Pool, noting swimming's health benefits.

**Neil McInnes** (Water Safety New Zealand) – Draft Long Term Plan

Mr McInnes spoke to their submission noting the importance of water safety awareness, previous partnerships between the organisation and Council, and the potential opportunities for future partnerships. He responded to questions from Elected Members concerning partnership pools, school pools, fresh water safety, surf life-saving and te awa kaitiaki.

*Cr Pascoe re-joined the meeting (9.43am) during the above submission.*

*Cr Macpherson re-joined the meeting (9.45am) during the above submission.*

**Margaret Evans, Jacquie Keelan, Raymond Mudford, Andrew Bydder, Bob Short, Rudi dePlooy and Russelle Knaap** (TOTI) – Draft Long Term Plan

The presenters spoke to their submission in support of gaining Central Government funding for school buses, environmental restoration projects, greater public access to swimming pools, a river swimming action plan, the walk-cycle bridge, a multi-modal transport plan, a governance review, and in opposition of the targeted Three Waters rate, and District Plan review. They spoke in support of providing affordable housing, and asked for additional time for TOTI to develop a plan to refurbish the Founders Theatre. They responded to questions from Elected Members concerning river safety, Three Water reform planning, Founders Theatre retention, and representation.

*Cr O'Leary re-joined the meeting (10.15am) during the above submission.*

**Gemma Major** (Seed Waikato) – Draft Long Term Plan

Ms Major spoke to their submission and advocated for greater youth engagement, increased youth worker support projects, partnership, collaboration and advisory opportunities with Council. She responded to questions from Elected Members concerning Council actions to support Hamilton youth.

**Kelvyn Eglinton and Ross Hargood** (Momentum Waikato) – Draft Long Term Plan

Mr Eglinton and Mr Hargood spoke to their submission noting the need for a regional endowment fund to fund community and iwi objectives. They noted support of the arts fund proposal, the walking and cycling bridge and funding the regional theatre. They responded to questions from Elected Members concerning the community land trust, collaborative creative sector funding and social housing solutions timeline.

**The meeting adjourned from 10.56am to 11.15am**

*Cr Thomson left the meeting during the above adjournment.*

**Kat Waswo** (GRRRL Fest Kirikiriroa) – Draft Long Term Plan

Ms Waswo spoke to her submission in support of increased creative arts funding, a dedicated arts strategy, noting Hamilton's Most Beautiful Large City award and an exodus of local talent. She responded to questions from Elected Members concerning the creative sector funding, northern suburb's transport infrastructure, re-allocation of funding, creative venues, and existing Council creative funding.

*Cr Thomson re-joined the meeting (11.19am) during the above submission.*

**Blair Currie** (Aranui User Group) – Draft Long Term Plan

Mr Currie spoke to his submission requesting funding for a consolidated sports hub in Ferrybank, and noted the proposals alignment with the Long Term Plan's five priorities. He responded to questions from Elected Members concerning funding alternatives, community support, relationship to Council's previous river plan proposal, community consultation and Waikato-Tainui funding opportunities.

**Don Good** (Waikato Chamber of Commerce) – Draft Long Term Plan

Mr Good spoke to their submission in support of prioritising infrastructure projects, and requested a focus on asset management. He responded to questions from Elected Members concerning user-pays visitor attraction models, territorial authority amalgamation, the difference between key infrastructure and "nice-to-haves" and congestion charging.

*Cr Macpherson left the meeting (11.50am) during the above submission.*

**Amy Marfell and Matthew Cooper** (Sport Waikato) – Draft Long Term Plan

Ms Marfell and Mr Cooper spoke to their submission in support of the cycleway and aquatic projects in the Long Term Plan. They responded to questions from Elected Members concerning aquatic projects and community need, community-school facility partnerships, the unfunded parks-connection programme and previous Ferrybank proposals.

**Richard Coventry and Lale Ieremia** (Te Awa Lakes) – Draft Long Term Plan

Mr Coventry and Ieremia spoke to their submission in support of strategic town planning in Hamilton's Northern suburbs. They responded to questions from Elected Members concerning existing development plans.

**Lynne Garnham and Betty Collins** (Tui 2000 Inc) – Draft Long Term Plan

Ms Garnham and Ms Collins spoke to their submission in support of greater funding to Waiwhakareke, their proposal to bring forward the education centre project, the Nature in the City strategy, and the Gully Restoration programme. They responded to questions from Elected Members concerning paid entry to Waiwhakareke.

*Cr Hamilton left the meeting (12.27pm) during the above submission.*

*Cr Wilson left the meeting (12.33pm) at the conclusion of the above submission.*

**Mischele Rhodes** (Individual)

Ms Rhodes spoke to her submission concerning property ownership and individual wealth and rates increases.

**Tom** (Individual)

The Presenter spoke to his submission in support of a management restructure at Council, and community consultation. He responded to questions from Elected Members concerning community consultation.

**Tony Armstrong** (HRRRA Hamilton Residents Ratepayers Association)

Mr Armstrong spoke to their submission in opposition of the cycleway projects and innovating streets, noting Hamilton resident's lifestyles and needs. He responded to questions from Elected Members concerning cycling, congestion reduction and infrastructure requirements.

*Cr Wilson re-joined the meeting (12.46pm) during the above submission.*



**Charm Skinner** (Individual) – Draft Long Term Plan

Ms Skinner spoke to her submission noting the importance of storytelling and the history of Kirikiriroa and mana whenua engagement throughout the Long Term Plan programmes.

**The meeting adjourned at 1.04pm to 2.00pm**

*Cr Macpherson re-joined the meeting during the above adjournment.*

**Kevin Hodges** (Individual) – Draft Long Term Plan

Mr Hodges spoke to his submission in opposition of the walk and cycle bridge, and outlined his proposal that use the existing rail infrastructure. He responded to questions from Elected Members concerning his proposal including weight restrictions, design and KiwiRail engagement.

**Kim Skilton** (Individual) – Draft Long Term Plan

Ms Skilton spoke to her submission and requested an increase disability access to aquatic facilities. She responded to questions from Elected Members concerning the aquatic facilities.

**Lloyd** (Individual) – Draft Long Term Plan

The presenter spoke to his submission in support of the Gully Restoration programme be extended and include improvement of Waikato River Walk. He responded to questions from Elected Members concerning treescapes.

**David Menkes** (Individual) – Draft Long Term Plan

Mr Menkes spoke to his submission in opposition of the demolition of the Municipal Pools and outlined the benefits of outdoor aquatic facilities in comparison to indoor facilities.

**Katherine Luketina** (Swim in the City) – Draft Long Term Plan

Ms Luketina spoke to their submission in opposition to the demolition of the Municipal Pools noting Historic Heritage, the Waikato River plan and partnership pools. She responded to questions from Elected Members concerning partnership pools.

*Cr Hamilton re-joined the meeting (2:24pm) during the above submission.*

**Gail Jonson** (Individual) – Draft Long Term Plan

Ms Jonson spoke to her submission in opposition to the demolition of the Municipal Pools. She responded to questions from Elected Members concerning cycleways and partnership pools.

**Amanda Liddington** (Individual) – Draft Long Term Plan

Ms Liddington spoke to her submission in support of improving the intersection at Grey Street-Wellington Street and requested an increase to the number of bus shelters across Hamilton City. She responded to questions from Elected Members concerning bus shelters and solutions for the Grey Street-Wellington Street intersection.

**Charlotte Muggeridge** (YWCA) – Draft Long Term Plan

Ms Muggeridge spoke to their submission concerning affordable accommodation and inclusionary zoning. She responded to questions from Elected Members concerning Council support, central city resident parking and affordable accommodation.

**Richard Porter** (Bike Waikato) – Draft Long Term Plan

Mr Porter spoke to their submission in support of more safer micro-mobility routes noting previous successful projects, safe cycle routes, cycling as a mode of transport, and changing attitudes. He responded to questions from Elected Members concerning Bike Waikato's mode-share targets, separate cycle paths, connectivity of cycleways, previous cycle projects and user uptake, cycleway safety standards, mode-share, fundraising initiatives including Waka Kotahi, temporary measures and cycling road-user data.

*Crs Pascoe and Bunting left the meeting (3.11pm) during the above submission.*

**Jason Cargo** (BTW Company Ltd) – Draft Long Term Plan

Mr Cargo spoke to his submission in support sporting centres and play infrastructure for all ages, the walk-cycle pedestrian bridge, and additional cycle infrastructure including parking. He responded to questions from Elected Members concerning bike locks and related infrastructure and Council support for sports centres.

**Alison Hamilton** (Individual) – Draft Long Term Plan

Dr Hamilton spoke to her submission in opposition to the demolition of the Municipal Pools noting the positives of outdoor pools, water safety, the Te Rapa pools projects and opportunities to re-develop the Municipal Pools.

**Anuradha Fitzwalter** (Individual) – Draft Long Term Plan

Ms Fitzwalter spoke to her submission in support of the Long Term Plan's five priorities, noting the 20 minute city strategy, climate change action, micro-mobility, and promoting mode-shift. She responded to questions from Elected Members concerning community education, timeline for mode-shift projects, electric vehicles and school travel plans.

*Crs Pascoe and Bunting re-joined the meeting (3.48pm) during the above submission.*

**George Lusty** (Individual) – Draft Long Term Plan

Mr Lusty spoke to his submission in support of the Gully Restoration noting environmental impacts of residential infill. He responded to questions from Elected Members concerning Significant Natural Areas (SNAs).

**Hayley Hamilton** (Individual) – Draft Long Term Plan

Ms Hamilton spoke to her submission concerning safety improvements to Discovery Drive pedestrian crossing. She responded to questions from Elected Members concerning planned traffic projects in the area.

**Darren Anderson and Don Law** (Hamilton Central Rotary Club) – Draft Long Term Plan

Mr Anderson and Mr Law spoke to their submission in support of the walk-cycle pedestrian bridge project noting Hamilton as a tourist destination, connections to the cycleways, architectural landmarks, road safety, the University link, and mode-shift. They responded to questions from Elected Members concerning budget and community fundraising.

**Jane Landman** (Waimarie: Hamilton East Community House) – Draft Long Term Plan

Ms Landman spoke to her submission in particular noting support of climate change action, cycleways, public transport, paid access to the Hamilton Gardens and gully restoration, and in opposition to Embassy Park, Stadium upgrades, and the targeted Hamilton Gardens rate. She noted the importance of well-designed and green infill housing developments.

Written submission from Roderick Aldridge, PJ Findlay, Bruce Clarkson and KJ Hodges were circulated to Elected Members prior to the meeting and will be attached to the minutes as **Appendix 3**.

**The meeting adjourned from 4.28pm to 4.41pm**

*Deputy Mayor Taylor and Crs Naidoo-Rauf and O’Leary left the meeting during the above adjournment.*

**6. Long-Term Plan, Revenue and Financing Policy, Development Contribution Policy and Growth Funding Policy Verbal Submission Report**

The report was taken as read.

**Resolved:** (Cr Wilson/Cr Macpherson)

That the Council:

- a) receives the report;
- b) notes that the verbal submissions will be heard on the 13-15 April 2021; and
- c) notes the submissions will be considered during the deliberations on the Long-Term Plan and the Draft Revenue and Financing Policy on the 4-6 May 2021 Council meeting.

**7. Development Contributions Policy Review 2021 - Submissions Summary Report**

The report was taken as read.

**Resolved:** (Mayor Southgate/Cr Hamilton)

That the Council:

- a) receives the report;
- b) notes that feedback will be considered during the deliberations on the Draft Development Contributions Policy 2021/22 at the 4 to 5 May 2021 Council meeting; and
- c) notes that the Development Contribution Policy 2021/22 is scheduled to be adopted at the 24 to 25 June 2021 Council meeting, effective 1 July 2021.

*Cr Naidoo-Rauf re-joined the meeting (4:42pm) during the above item. She was present when the matter was voted on.*

*Cr O’Leary re-joined the meeting (4:44pm) during the above item. She was present when the matter was voted on.*

**8. Growth Funding Policy Review - Submission Summary Report**

The report was taken as read. Staff responded to questions from Elected Members concerning the population growth figures.

**Resolved:** (Cr Macpherson/Cr Bunting)

That the Council:

- a) receives the report;
- b) notes that submissions will be considered during the deliberations on the Draft Growth Funding Policy at the 4-5 May 2021 Council meeting; and
- c) notes that a Growth Funding Policy is scheduled to be adopted at the 24-25 June 2021 Council meeting.

**Following the conclusion of the verbal submissions, Elected Members requested the following information and matters be included in the Deliberations report** (noting that further questions were emailed directly to staff following the hearings):

- confirmation that the Embassy Park upgrades will provide accessible access to the Waikato Theatre;
- options to re-institute a youth advisory group;
- engagement with the Ferrybank group to discuss alignment with the Riverbank plan;
- funding for water safety initiatives around the river;
- exploring partnership pool opportunities with ministry of education assets and other outdoor pools;
- examine options for bus bollards;
- investigate Significant Natural Areas as support for gully protection, and private/public land;
- aquatic disability access to facilities;
- river swimming safety features;
- Priority bus lanes at Fairfield;
- Clarity regarding Council interest rates;
- Best practice guidelines for Gully restoration;
- Heavy/Boundary road intersection, confirmation of priority;
- Te Awa Lakes development contributions options;
- Data concerning accessibility of bus stops and playgrounds for baseline targets;
- user-pay opportunities;
- school travel plan opportunities;
- investigate river swim opportunities; and
- inner-city treescapes.

*Cr Naidoo-Rauf retired from the meeting (4:53pm) during the above discussion.*

*Cr O'Leary retired from the meeting (5:01pm) during the above discussion.*

*Deputy Mayor Taylor re-joined the meeting (5:07pm) during the above discussion.*

*Cr Wilson retired from the meeting (5:09pm) during the above discussion.*

***The meeting was closed with Karakia from Cr Hamilton.***

**The meeting was declared closed at 5.12pm on Wednesday 21 April 2021.**

[cover page]

## Share your voice on Maaori wards and other means of achieving Maaori representation

Tukuna mai I ooou whakaaro moo te kaupapa Waari Maaori me eetehi atu huarahi ki te whakatutuki whakaahuahanga Maaori

Hamilton City Council is committed to making sure Maaori are best represented in our decision-making process, and is looking to establish Maaori wards from 2022 to achieve this. We want your views on establishing Maaori wards and any other ideas you have for Maaori representation. More information on why this is important and about Maaori wards is laid out here. Please have a read before giving us your feedback.

Give us your views by 10 May 2021.

## Background

Hamiltonians who identify as Maaori make up 23.7% of our city's population (in 2018). This is projected to increase to around 30% by 2038.

Under Te Tiriti o Waitangi/The Treaty of Waitangi, the Local Government Act and other legislation, all councils have a duty to provide opportunities for Maaori to contribute to the local government decision-making process, as well as other commitments to Maaori. Given the size of the Maaori population in Hamilton Kirikiriroa, and the unique status of Maaori under Te Tiriti, Hamilton City Council recognises its requirement to give a voice to this significant sector of our community.

Making sure Maaori are best represented in Hamilton City Council's decision making is not just about complying with Te Tiriti or legislative obligations – it's also an opportunity to make sure that our relationship with Maaori meets the needs of that community and is one that all Hamiltonians can be proud of and benefit from.

### Te Tiriti o Waitangi/The Treaty of Waitangi

The principles of partnership, participation, and protection underpin the relationship between the government and Maaori under Te Tiriti o Waitangi/The Treaty of Waitangi.

Partnership involves working together with iwi, hapuu, maataa waka (Maaori who live in Hamilton, but whose traditional rohe is elsewhere) and Maaori communities reasonably and with good faith on major areas of common interest.

Participation encourages and requires Maaori to be involved at all levels of government, including in the decision-making, planning, development, and delivery of services.

Protection involves the Government working to ensure Maaori have the same level of opportunity and access to services as non-Maaori, and safeguarding Maaori cultural concepts, values and practices.

Read more about Te Tiriti o Waitangi/The Treaty of Waitangi here: <https://archives.govt.nz/discover-our-stories/the-treaty-of-waitangi>

### Local Government Act and other legislation

The Local Government Act (LGA) and other legislation is how central government requires councils to recognise and respect Te Tiriti o Waitangi/The Treaty of Waitangi obligations. This means local government acknowledges the unique perspective of Maaori on decisions that relate to people, land, assets, and resources. Specifically, the LGA requires councils to provide opportunities for Maaori to contribute to the decision-making process and consider ways to enhance Maaori capacity to contribute to decision-making.

The Local Electoral Act requires councils to enable fair and effective representation for individuals and communities. It is up to each council to choose the most appropriate and effective form of Maaori representation for their population - taking into account the needs and preferences of their Maaori partners and the wider community.

### He Pou Manawa Ora

Hamilton City Council is in the process of finalising He Pou Manawa Ora - Pillars of Wellbeing, a strategy which outlines our vision for a city that celebrates its whole history, including its unique Maaori heritage and ensures everyone has a voice in developing its future.

**APPENDIX 1**

Council Long-Term Plan 2021-31 Hearings Open Agenda - 13 April 2021 - DRAFT Maaori representation - consultation document

Developed in consultation with key Maaori stakeholders, this strategy, once adopted, would inform how Council will use the pillars of history, unity, prosperity and restoration to build a proud and inclusive city for the wellbeing of all its people.

The unity pillar (he pou toorangapuu) in particular aims to increase Maaori input into Council decision making, through Maaori participation in Council engagement processes, Maaori representation on Council and its committees, and through considering the role of Maatauranga Maaori (Maaori knowledge) in the work Council undertakes.

Public consultation on the draft He Pou Manawa Ora strategy was open in February 2021 and received more than 1000 submissions. Community feedback on He Pou Manawa Ora and the updated strategy will be considered by Council's Community Committee on 18 May 2021.

Read the draft He Pou Manawa Ora strategy here:

[https://haveyoursay.hamilton.govt.nz/communications/he-pou-manawa-ora/user\\_uploads/he-pou-manawa-ora-draft-strategy.pdf](https://haveyoursay.hamilton.govt.nz/communications/he-pou-manawa-ora/user_uploads/he-pou-manawa-ora-draft-strategy.pdf)

## What's in place now?

Hamilton City Council currently has the following arrangements to support Maaori representation and participation in decision-making:

### **Waikato-Tainui/Hamilton City Council Co-Governance Forum**

The Co-governance Forum supports Waikato-Tainui and Council to build a strong and mutually beneficial relationship, provide opportunities for collaboration that promote better wellbeing outcomes through agreed projects, and meet obligations to restore and protect the Waikato River.

Read Waikato-Tainui's strategic plan, Whakatupuranga 2050, here: <https://waikatotainui.com/wp-content/uploads/2020/11/FINAL-Five-Year-Plan.pdf>

### **Te Haa o te Whenua o Kirikiriroa (THaWK)**

A collective mandated to protect the views and interests of their respective hapuu (Ngaati Maahanga, Ngaati Tamainupoo, Ngaati Wairere, Ngaati Korokii Kahukura and Ngaati Hauaa) which have traditional connections to the land and waterways within Hamilton Kirikiriroa. Council's partnership with THaWK gives mana whenua input into decision making relating to the management of Hamilton's natural and physical resources.

### **Te Runanga o Kirikiriroa (TeROK)**

Formally established in 1988 and under the direction of the late Maaori Queen, Te Atairangikaahu, and the Mayor of the time, the late Sir Ross Jansen, TeROK represents maataa waka and Pasifika peoples living in Hamilton Kirikiriroa. TeROK provides information and advice and represent the views of maataa waka in the development of Council strategies, policies and plans.

### **Maangai Maaori**

In 2018, Council pioneered the Maangai Maaori model (meaning 'voice of Maaori') to represent iwi and maataa waka on Council committees. Maangai Maaori are nominated by iwi and maataa waka organisations based on skill, knowledge and experience and provide a valuable role representing the views of key Maaori partners and stakeholders. Maangai Maaori have speaking and voting rights at their respective committees but do not sit on full Council.

### **Te Ngaawhaa Whakatupu Ake**

Te Ngaawhaa Whakatupu Ake includes members of Waikato-Tainui, THaWK and TeROK, who provide expert and knowledgeable cultural advice, foster and promote the relationship between Council and Maaori, and support collaboration with public, private sector, and central government.



## Maaori wards

While there are some mechanisms already in place for Maaori to have input into Council decision making, none of the measures ensure Maaori representation in decisions by having speaking and voting rights at full Council meetings.

Maaori wards are one way to achieve this, and Council has agreed in principle to introducing Maaori wards from the 2022 local government elections.

Maaori wards allow for Elected Members of Council to be voted in by electors on the Maaori roll. Maaori ward members are obligated to represent the interests of all Hamiltonians, not just the interests of Maaori.

Recent changes to legislation mean councils can establish Maaori wards for the 2022 elections without the potential for a binding poll generated by just 5% of electors. To introduce Maaori wards from 2022, Council needs to make that decision by 21 May 2021.

Iwi, mana whenua and other members of the Maaori community have indicated strong support for the establishment of Maaori wards in time for the 2022 elections.

If Council was to introduce Maaori wards, the number of Maaori ward seats (and General ward seats) would be determined as part of a wider representation review later this year. Based on current population, it is likely that Hamilton would have two Maaori seats. The review would also determine if Maaori ward seats are in addition to or in place of General ward seats.

**Post this form to: Freepost 172189, Hamilton City Council, Communication and Engagement Team, Maaori representation, Private Bag 3010, Hamilton, 3240.**

**Consultation closes at 5pm on Monday 10 May 2021.**

Please give us your views on Maaori wards and other means of achieving Maaori representation.

DRAFT

57

## APPENDIX 1

## Council Long-Term Plan 2021-31 Hearings Open Agenda - 13 April 2021 - DRAFT Maaori representation - consultation document

## ABOUT YOU:

This section tells us a bit more about you. By capturing this information, we will be able to better understand who is, and isn't, providing feedback.

## Privacy statement:

The Local Government Act 2002 requires submissions to be made available to the public. Your name and/or organisation will be published with your submission and made available in a report to elected members and to the public. Other personal information supplied will be used for administration and reporting purposes only. Please refer to Council's Privacy Statement at [hamilton.govt.nz](http://hamilton.govt.nz) for further information.

## WHERE DO YOU LIVE?

I live in Hamilton, my suburb is: \_\_\_\_\_

I live outside Hamilton:

☐ Waipa ☐ Waikato ☐ Elsewhere in New Zealand ☐ Overseas

## CONTACT DETAILS (please print clearly)

We will use this to get in touch with you if you would like the opportunity to talk to us about your submission in person.

Name: \_\_\_\_\_

Organisation (if responding on behalf of) \_\_\_\_\_

Phone: (day) \_\_\_\_\_ (evening) \_\_\_\_\_

Email: \_\_\_\_\_

## WHAT IS YOUR AGE GROUP? (at your last birthday)

☐ Under 16 ☐ 16-19 ☐ 20-24 ☐ 25-29 ☐ 30-34  
☐ 35-39 ☐ 40-44 ☐ 45-49 ☐ 50-54 ☐ 55-59  
☐ 60-64 ☐ 65-69 ☐ 70-74 ☐ 75-79 ☐ 80+

## WHICH ETHNIC GROUP DO YOU IDENTIFY AS? (select all that apply)

☐ NZ European ☐ Māori ☐ Indian ☐ Chinese ☐ Samoan  
☐ British ☐ Filipino ☐ Tongan ☐ South African ☐ Cook Island Māori  
☐ Other \_\_\_\_\_

## WHICH LANGUAGE(S) DO YOU PREFER TO COMMUNICATE IN? (select all that apply)

☐ English ☐ Te Reo Māori ☐ Hindi ☐ Sinitic ☐ North Chinese  
☐ Tagalog ☐ French ☐ Afrikaans ☐ Yue ☐ Punjabi  
☐ Samoan ☐ Spanish ☐ Other \_\_\_\_\_

## WHICH OF THE FOLLOWING BEST DESCRIBES YOUR HOUSEHOLD SITUATION?

In some cases, you may want to find out about a respondent's household situation. If so, follow this layout.

☐ Living alone ☐ Living with others that are not family  
☐ Family or couple with dependants (children or other family) ☐ Family or couple with no dependants

*Hamilton City Council uses double vowels in te reo Māori to represent a long vowel sound as it is the preference of Waikato-Tainui.*

## Māori Wards

NZ was an uninhabited country, no one lived here, Then the first migrants came by waka, these migrants then gave birth to children and those children became the first native people of this country, Māori. Later on, other migrants arrived by ship and plane. These people also gave birth and their NZ born children also have become natives of New Zealand. Every person's ancestors in NZ have come from overseas.

And this is the problem. The lack of recognition of the more recent NZ born native people. So, I accuse the Council, Iwi and The NZ Government of racism by exclusion and favouritism based on where a person's ancestors have come from when setting policy.

Maori wards is an example of this. Imagine the calls of racism from Maori if we had the policy such as “by Europeans only, for Europeans only”, and only European wards.

But I do support Māori having a guiding hand, a strong culture and Language. I believe having a unique NZ Māori Language builds NZs identify, That what Māori are seeking is a right of birth, But not by excluding other NZ born people's right to self-determination. Unfortunately, the government sold us all out in 1972 by giving non-Citizens the right to vote.

So what's the answer. I Don't know, Maybe

For the council to do real consultation evenly, not just with one group for months and lip service to others.

For the government and council to recognise our identity and not to discriminate against its own citizens based on ancestry.

And lastly for Citizens only to have the right to vote for council and government.

Thank you

Brett Erceg

Kia Ora Councillors,

My name is Stevie Ransfield and I am a wahine maaori that currently resides within the HCC boundary and is registered to vote. I am 32 years old and am a young professional.

The context of my submission is to support a decision to allow Maaori Wards within this rohe to be accepted and passed without further consultation.

The evidence that supports this is that it does not detrimentally impact the system. It is merely an opportunity to allow a more robust vehicle for maaori to be represented and it will be up to Maaori to activate this space.

Secondly, it is incredibly insulting that HCC honour Te Tiriti, but apply the principles when it suits the councils narrative. There is a sense of Tokenism in the air. Take a look around the HCC offices, social media platforms and website. There is a beautiful bi lingual collaborative approach however not consistent at the decision making table.

Thirdly, from the consensus reports in 2018, 23% of the region identify as Maori, that is a large portion of this population that also should be represented accordingly.

In this contemporary age there is no room for archaic views of the past and urge all councillors to be BOLD in the pursuit of equality in its truest form. Honouring the founding documents that is apart of this nations fabric and unwritten constitution is the first step in this space.

Revolutionise and mobilise our wonderful communities and lead by example.

Mauri Ora!!

Stevie Ransfield

# CATHOLIC DIOCESE OF HAMILTON



## SUBMISSION TO THE HAMILTON CITY COUNCIL ON THE ESTABLISHMENT OF MĀORI WARDS.

The Commission for Justice, Peace, and Aroha of the Catholic Diocese of Hamilton supports the establishment of Māori wards for the Hamilton City Council.

The introduction of Māori wards is in accord with and fulfills the principles of Te Tiriti O Waitangi. It also meets our understanding of and respects all peoples' innate dignity and their right to participate at all levels of government.

Te Tiriti calls on Māori and Pākehā to work together and value each others gifts and talents. In our Pākehā dominant society, there is currently less opportunity for issues of particular importance to Māori to be addressed by Māori for Māori. Māori wards will help redress this situation. It will allow Māori voices to be heard, Māori opinions to be valued. Māori wards will help support and protect Māori knowledge, tikanga, mana – ngā mātauranga Māori.

The establishment of Māori wards meets the criteria of the Catholic Social Teaching principle of subsidiarity, which argues that social problems are better understood and addressed by people who are close to the problems themselves. Subsidiarity means that families, community groups, neighbourhood associations should be fostered to promote more effective problem solving and local control over decision-making. Wards by Māori for Māori will ensure that rights are protected and people's common good is advanced.

The common good is central to the Catholic vision of social life. Pope John XXIII defines it as 'the sum total of all those social life conditions that enable individuals, families, and organisations to complete and effective fulfillment (MM#74). Māori wards support Te Tiriti O Waitangi's articles according tino rangatiratanga to Māori, which provides for Māori self-determination and mana motuhake in the design delivery, and monitoring of Hamilton City Council's services. They support Māori and all of society to 'complete and effective fulfillment' and work towards a true partnership, building a positive and proactive relationship between tangata whenua and all tauwi.

Dave Colquhoun  
Chairperson  
Commission for Justice, Peace, and Aroha

51 Grey St, Hamilton East, Hamilton, 3216. PO Box 4353, Hamilton 3247  
P. 07-856-6989 E. [reception@cdh.org.nz](mailto:reception@cdh.org.nz)

**APPENDIX 3 – Draft Long Term Plan Written Submissions**

**PJ Findlay**

**Presentation to Council Hearing on 15 April 2021**

**Growth Funding Policy 2021**

1. I support all Growth Funding Policy Proposals itemised in A-E in the feedback form for consultation purposes as this suite of policy proposals helps direct Council's decision-making for growth projects and associated infrastructure not aligned with Council's Long-Term Plan. The policy proposals referred to include:
  - a. Infrastructure Funding and Finance Act 2020 proposals.
  - b. Reference to the NPS-UD and related Unfunded Growth Projects.
  - c. Reference to the four 'wellbeings' of communities in the present and for the future, namely social, economic, environmental and cultural wellbeing.
  - d. Update references from the "Proposed District Plan" to the "Operative District Plan".
  - e. For Growth Funding Policy to direct infrastructure investment decision-making in a way that aligns with this strategic planning.

**Development Contributions Policy 2021**

2. I support retention of the CBD remission for development in the central city for a further three years.
3. Additional criteria could be introduced to be eligible for this remission.
  - a. At a minimum this should include design criteria but could extend to a mix of:
    - i. an empowered design panel that has more flexibility as to the parties eligible to sit on that panel,
    - ii. the scale of development & additional capacity (e.g. housing units/commercial space), whether aggregation of land has occurred and its resulting size ( $\geq 1,000\text{m}^2$ ),
    - iii. the contribution to CBD renewal (e.g. earthquake prone/non-compliant/decrepit buildings/contribution to amenity and wellbeing),
    - iv. proximity to significant transport infrastructure and public transport.
4. I support the introduction of 100% DC remission for development of six or more storeys in the CBD and its extension to include the Residential Intensification Zone (as shown in the attached zoning diagram) for a 3-year period based on the following rationale and qualifications:
  - a. The policy commitment is for a short period, the effectiveness of which can be measured and reviewed over the 3yr life of this policy.
  - b. It encourages development of scale.
  - c. Population growth in both the CBD and the city fringe is encouraged and complementary, and likely to contribute to its resilience, diversity, amenity, and wellbeing over time.

**APPENDIX 3 – Draft Long Term Plan Written Submissions****PJ Findlay**

- d. Inclusion of the Residential Intensification Zone is consistent with the NPS-UD where greater density of development and scale is sought in areas within a walkable distance of the CBD, and further, with HCC's aspiration for a walkable and liveable city.
- e. The Inclusion of development in the Residential Intensification Zone/ adjacent to Strategic Transport corridors within a walkable distance of the CBD is qualified as follows:
  - i. a minimum of 4 levels of development occurs,
  - ii. for sites  $\geq 1,000\text{m}^2$  (including by aggregation) to encourage development of scale and aggregation.
- f. The NPS-UD directs Council to consider/allow greater height and density of development in the Residential Intensification Zone that is more consistent with the CBD. I suggest incentives such as height, density, and site coverage (i.e. bonus floor area) be deployed subject to urban design, built form (e.g. quality/enduring materials), amenity and wellbeing criteria being met.
- g. For the avoidance of doubt, I request this policy apply to adjacent and commonly owned properties at 1140 Victoria St and  $2,747\text{m}^2$  and  $1,358\text{m}^2$  respectively (as shown in the attached). Examples of residential development typologies and yield that could be achieved at these sites are as follows:

Scenarios	Gwynne St	Victoria St	Total Residential Units
Currently	2	1	3
Operative District Plan (minimum)	6 townhouses/houses	1	7
ODP (medium density)	18 duplex, townhouse, 2 and 3 level	9	27
Operative DP (with higher density)	Apartments over 4 levels, with 1 underground level of 70 car parks + above ground parks.  Based on 50 two-bedroom duplex, 10 three-bedroom duplex		60
Operative DP informed by NPS-UD	Apartments, 60 + 15 per additional level  Basement and above ground car parks		75-90

**5. Social housing remission.**

I support 100% remission on residential DCs for registered social housing providers and charitable trusts providing social housing subject additional criteria being met e.g. design, build quality, longevity of materials used, scale of development & additional housing



capacity provided, amenity, proximity to transport infrastructure and public transport represent additional criteria that could be used to determine eligibility.

6. The introduction of development caps on non-residential DC charges is supported. Revenue sacrifice associated with the introduction of caps may be mitigated over time from the ongoing revenue stream from rates arising from such development.

#### LTP 2021-2031

Population growth forecasts are based on NIDEA low population forecasts<sup>1</sup>.

7. My concern is adoption of a low growth scenario may unnecessarily lead to a 'disconnect' between CAPEX and its causal nexus to growth if this growth scenario undershoots growth that is underway or that can reasonably be expected, leading to the understatement of capital expenditure.
8. Before the LTP is finalised and adopted, my preference is for the 'current run rate of growth' to be measured against the NIDEA low, medium, and high growth scenarios, historical and forecast growth, with the veracity of growth rate adopted independently verified.

#### Transport

9. I support more safer routes for biking and micro-mobility together with the 10-year investment of \$55 million over the next 10 years provided:
  - a. Funding assistance is optimised from NZTA, central government and others.
  - b. Existing bridge structures being fit for purpose. On this point, having lived alongside the Whitiara Bridge for nearly 40 years, my view is the current configuration is not safe for all modes of transport, particularly for pedestrians and micro-mobility users and urgently requires attention. There is simply not room for all users. No suicide prevention infrastructure exists. No barrier exists above the level of the current walkway adjacent to the westbound traffic lane. Further, capacity issues are posed, particularly for westbound traffic.
  - c. Consequently, my request is to move Whitiara Bridge Capacity improvements at a net cost of \$4.393M from 'unfunded' to 'funded'. In my view, leaving 'as is' inconsistent with the delivery of Council's 20-minute and multimodal transport strategy.
  - d. At the very least Bridge Capacity Improvements need to be designed and 'implementation ready' to capture NZTA and Central Government funding if and when it becomes available.

#### 10. Ohaupo Rd Corridor from Normandy Ave to Dixons Rd roundabout

No intersection upgrades can be identified in funded and unfunded capital programmes on this corridor. Some allowance should be made to activate and trigger consideration of SH3 safety and other improvements from Normandy Ave to Raynes Rd by NZTA and Waikato Regional Council if HCC is serious about existing congestion, level of service issues, out of boundary growth in a NPS-UD and Hamilton-Waikato Metro Spatial Plan context, particularly for Hamilton south and discussions underway with Waipa DC concerning extending the boundary of Hamilton City up to the city side of Southern Links.

---

<sup>1</sup> 'Shaping Hamilton Kirikiriroa together' document, page 10.

11. Southern Links

I would like to see HCC more regularly promote the remaining phases of the Southern Links package generally and with central government, and to seek regional support to elevate its priority to one of equivalence with or ahead of Cambridge-Piaraere. This would enable completion of this project in its entirety, cater for additional housing growth and achieve optimal efficiency in the movement of freight and people.

12. Introduction of Paid Commuter Parking around the fringe of the central city to fund alternative transport initiatives is not supported for the following reasons:

- a. A Master Plan of Transport Initiatives has yet to be produced that provides the blueprint for an integrated approach to manage, limit or decongest current and planned transport corridors. Any master plan would need to be peer reviewed by suitably qualified independent transport planners, urban designers and be subject to public consultation.
- b. Expected to be included in the Master Plan of Transport Initiatives are:
  - i. locations of park'n ride facilities around the CBD, shuttle services to and from the CBD co-designed with public transport, alternative modes of transport and routes necessary to realise the 20-minute city aspiration.
  - ii. locations for storage of micro mobility transportation would need to be identified.
  - iii. Techniques would need to be developed and articulated for current and anticipated development within the 'Fringe Area' that maintains current amenity. That is, 24-hour parking for existing and new residents, their visitors, and users with disabilities.
- c. Currently, the multi-modal transport network and park'n ride facilities are not sufficiently well developed and mature to displace the need for such parking.
- d. The adequacy of alternative off street parking would need to be demonstrated on a regular and ongoing basis.
- e. For households in the 'fringe' area, 24-hour resident, visitor and disability parking does not appear to be a well-developed policy capable of prompt implementation to mitigate the effects of such a policy and encourage greater density of development around the fringe of the CBD.
- f. It is counterintuitive to the realisation of intensification objectives close to the CBD. I fail to see practical alternatives that would be available to residents and visitors to park 'without cost' as would occur outside the area identified. Further, if on-site car parks are no longer intended, where are the cars supposed to park if not on the street.
- g. I note that the property I own at Gwynne Place is included in the commuter parking proposals. It is a perfect example of an area where no practical alternative to off street parking exists for residents and visitors alike. Further, irrespective of the 'commuter parking proposal', 24-hour resident, visitor and disability parking

**APPENDIX 3 – Draft Long Term Plan Written Submissions**

**PJ Findlay**

is appropriate for Gwynne Place as no practical alternative offsite parking is available in close proximity to the site.

- h. If adopted, a distinct group of landowners/ratepayers will bear the brunt of a policy designed to fund alternative transport initiatives for the benefit of all ratepayers.
- i. It was not that long ago that the health of the CBD was in a difficult place. I am not convinced the CBD is 'out of the woods' sufficiently to discourage/avoid the migration of workers, business and residents out of the CBD and its fringe if such policy was to be implemented. The effects of development of the Base, the GFC and Covid-19 linger, and remain both fresh and relevant.

**13. New walking and cycling bridge across the Waikato River (option 1) is supported subject to:**

- a. being able to convey service and emergency vehicles,
- b. being at a gradient that allows ease of use by mobility scooters and wheelchair users,
- c. the chosen location complementing the capacity and function offered by other bridges nearby, rather than competing or unnecessarily duplicating their functionality and usage.

**14. Subregional wastewater treatment plant<sup>2</sup>**

- a. Notes to the capital programme suggests Council start investing now, otherwise Waipa DC is likely to have to proceed with standalone solution at Cambridge and we will miss this opportunity. However, I note implementation of the subregional wastewater treatment plant is 'unfunded' works for 2028 to 2029. The imperative to act appears inconsistent with the action as revealed in the LTP.
- b. At the very least, my preference is for implementation of the subregional wastewater treatment plant to immediately move to the 'funded' LTP should 'Peacocke funding' be moved to 'off balance sheet' to a SPV or Waipa DC commit to subregional wastewater plant.

**15. Second boat jetty at Hamilton Gardens in 2021-23 or 2026-28**

I am not in strong support of either option. I suggest other uses/jetty locations be investigated to determine whether these monies could be better deployed.

**16. Hamilton Gardens parking**

I support keeping free parking as is to enable patronage to be grown/rebuilt following Covid-19, and to review this proposal in for the 2024-25 LTP. That said, I would support charging tourist buses and tourists (i.e. not NZ residents) if ticketing systems can be economically implemented.

**PJ Findlay**

---

<sup>2</sup> 2021-31 Long-Term Plan – Unfunded Capital Programme - Priority 2 (A City Where Our People Thrive), last line item.

**APPENDIX 3 – Draft Long Term Plan Written Submissions**

**Bruce Clarkson**

Teena Koutou Koutou

Your worship Mayor Paula and Elected members. Thank you for the opportunity to comment on the Long Term Plan (2021-2031) proposals. My focus today is entirely on Kirikiriroa/Hamilton Gullies specifically LTP Priority Five "A Green City". I want to congratulate Council for significantly shifting the priorities outlined in previous iterations of the LTP to a greater focus on environmental matters. I speak as a ratepayer, a professional restoration ecologist, author of the Gully Restoration Guide and gully restorer, and chair of the Australasian chapter of the Society for Ecological Restoration. There could be no better time to be considering our contribution to biodiversity restoration: the UN Decade of Ecological Restoration began on 30 March 2021. The UN embarked on the programme in recognition of the urgent need to reverse biodiversity decline and environmental degradation. Not just for biodiversity but because the multiple benefits that will accrue including the amelioration of climate change, building social and cultural capital along with natural capital, and because human wellbeing and survival ultimately depend on global limits.

Council is on the cusp of a decision, which could place Kirikiriroa on the national and global map in reviving its native biodiversity from about 2% of the original to about 5% by the time the 10 year cycle of the LTP is complete. This will still leave some work to do to achieve the Indigenous Biodiversity National Policy Statement goal of a minimum of 10% in the urban and periurban zones but will put us firmly on the right trajectory.

The submission template asked whether the recommended \$29M should be invested largely in the latter 5 years (Councils preferred option) or by investing more in the first 5 years (option 2). No doubt there are reasons other than ecological which have a bearing on the two options provided. But I have carefully considered the pro and cons of the two options and would like to suggest a third (intermediate) option. That is to start earlier but with the proviso that the first year or year and one half is devoted mainly to the planning and capability development needed to make sure this investment is fully realised. By that, I mean ensuring that the work results in restoration, which is as resilient and enduring as possible and that an adaptive management approach is implemented.

The excellent Nature in the City Strategy now needs to be complemented by a staged implementation plan of similar quality. While some skeletal thoughts on prioritisation are contained in the Nature in the City Strategy and the Local Indigenous Biodiversity Strategy report released by the Waikato Regional Council some more robust analysis to support the prioritisation and work plan is needed. In addition, since the Significant Natural Area schedule was incorporated in the District Plan more biodiversity information has become available, more cases have been to the Environment Court and more research focussed on Hamilton indigenous ecosystems has been published. Further, the iwi and community restoration ecosystem has evolved and new innovative models of restoration delivery have appeared.

To give just one example of how the information base has expanded, I attach a map of plant, bird, insect and fungi records for Hamilton from iNaturalist. In total 1309 species are included and 4,441 observations. The vast majority were recorded during and post lockdown further underscoring the importance of nature in our city. I also give below a brief list of key points/actions for consideration in developing an implementation plan and starting the restoration. I am available to discuss any of these points in detail or provide published references if required.

To conclude, thank you again for the level of support indicated in the LTP for gully restoration. As always, I am available to help in any way I can to support this important initiative towards making Kirikiriroa a green city.

Noo Reira Teena Koutou, Teena Koutou, Teena Koutou Koutou.

Bruce Clarkson



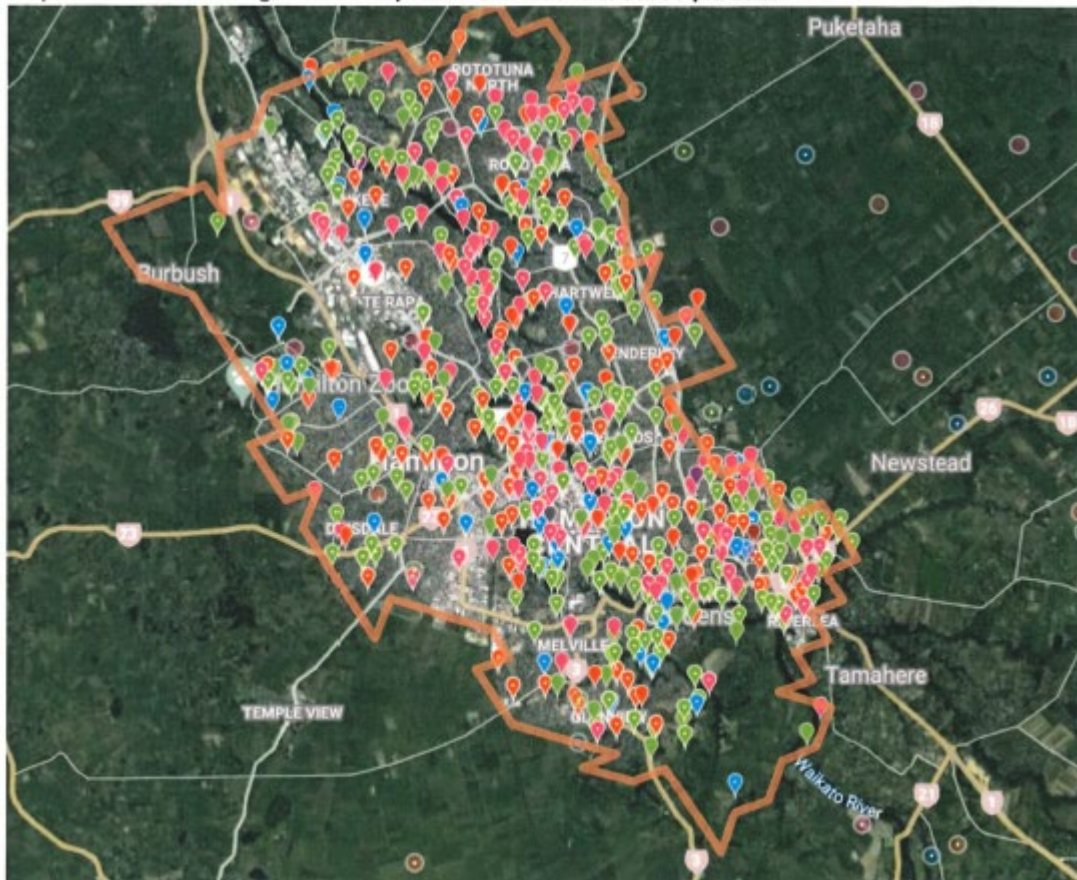
**APPENDIX 3 – Draft Long Term Plan Written Submissions**

**Bruce Clarkson**

**Key points/actions to ensure effective investment in gully restoration**

1. Prioritisation of where to invest including balancing reconstruction of new habitat with maintenance and enrichment of established restoration plantings and/or significant natural areas
2. Applying best practice: e.g. Society for Ecological Restoration National Restoration Standards and baselines including sharing and documenting results by suitable ecological monitoring and reporting.
3. Development of capability: ensuring the work force is trained or upskilled in ecological restoration principles and practice.
4. Technical Advisory Group: reaching out to those with expertise in gully restoration and seeking feedback on plans and implementation.
5. Maximising iwi and community involvement including balancing the different delivery models from in house to new models, which link job creation to restoring nature, and voluntary community action.

**Map of Kirikiriroa showing iNaturalist species observations as at 20 April 2021**



## **Hamilton City Council Long Term Plan Submission - Supporting document 1/04/2021**

I am Roderick Aldridge. I have lived in Hamilton for more than 30 years.

I make my submission as a concerned resident of Hamilton City

I thank the Council for this opportunity to suggest how we can build the kind of city that we all want to live in.

I have some specific suggestions, but I want to concentrate on ways to changing the system in a coordinated way.

### **Analysis**

The way we have built our cities is unsustainable. It has only been possible so far by using unsustainable amounts of energy from cheap fossil fuels. It has enabled us to design and build energy-intensive housing, businesses and transport systems – indeed a whole energy-intensive way of life. For example; if you told a task force to design the most energy-intensive transport system possible they would have had a hard time coming up with anything more energy-intensive than the current system of roads with their noisy fossil-fuel-guzzling vehicles and toxic emissions.

Similarly it has enabled energy-intensive low density housing to extend for greater distances, covering greater areas - in the process burying much of our most productive land and causing much environmental damage.

The predominant single dwelling per section low density housing has many disadvantages. If the density is halved:

- Twice the area is buried under houses and roads and has its ecology damaged.
- Services such as water, stormwater, sewerage, power and communication networks have to go 70% further - and their connections back to the service centres or Central Business District have to be upgraded.
- Public transport is not viable without subsidy.

Another less obvious but important disadvantage is that it makes strong local communities difficult to develop and maintain. Social or community hubs are likely to be further apart – schools, playgrounds, libraries, work, shopping, halls and theatres, are unlikely to all be within ten or even twenty minutes of each other – or within easy access of a large enough number of people to establish a successful club or organisation. In older communities with denser housing communities tended to form spontaneously but in low density areas it has to be planned for and encouraged.

Using cheap fossil fuel has enabled many New Zealanders to have their dream of owning their own home and garden, but at the expense of the environment and social wellbeing. But, as the Covid19 lockdown showed us, our own little home can become our own little prison unless we have a supporting community.

Local authorities all over New Zealand and beyond are finding that our systems are already uneconomic and unsustainable. The further the urban area extends the worse the problem – witness Auckland.

Roderick Aldridge

Our present unsustainable system is the result of many decisions favouring short term expediency over long term sustainability.

For these and other reasons – for example: reducing Greenhouse Gas emissions, resilience against the effects of climate change, protecting indigenous biodiversity – we need to change much faster to a sustainable lifestyle that promotes wellbeing, preferably in a planned way before a crisis forces a disruptive change or system collapse.

I urge Councillors to look at these problems as opportunities to change to something better.

## **Some thoughts on the best ways to change**

It is much easier to design the right infrastructure at the start. Retrofitting it afterwards is disruptive and expensive and sometimes impossible.

For example: the problems and compromises of the Eastern Pathway project, or infilling housing which typically results in increased loads on all services – particularly stormwater (because of the increase in impermeable surfaces) but also all the others - water supply, sewerage, electricity, communication services, recycling etc.

Similarly acting before problems arise or when they are first noticed is much easier, less disruptive and more effective than postponing action until there is a crisis.

Taking a whole of system or holistic perspective can reveal ways of meeting multiple goals which would be difficult or expensive to achieve separately. For example: denser housing, safe transport networks for all modes of transport from pedestrians to cycles, and e-vehicles from scooters to buses, and providing social hubs (libraries, halls, playgrounds reserves , natural areas, etc.) saving prime agricultural land for food production – these can all work together.

## **Some specific points**

I have made many points using the Have Your Say survey which I won't repeat here.

These are some that I couldn't see an easy way of making via the survey.

### **Risk/Environment**

Flood protection should be treated as an ecological issue rather than an engineering problem. It should be dealt with by slowing the flow - by restoring the catchment to restore its water retention capacity and to protect against erosion - and by restoring the natural wetlands all along the river, even creating artificial ones if necessary.

Engineering to speed the flow results in a wall of water and debris sweeping down the river, damaging the environment as it goes and compounding the problem of dealing with it downstream.

### **Transport**

Transforming to a sustainable system.

Providing for transport hubs. These are needed for the energy efficient system serving the denser future city. The sites need to be protected now and planning started now for them to be ready in time for the change to a sustainable system.



Infrastructure that provides safe interaction for all modes of transport – pedestrians, cycles and e-vehicles from scooters to buses and everything in between.

Effective public transport. This needs to be provided ahead of time to be ready for the change from (mostly single-occupant) private cars.

## **Biodiversity**

This is another example of how taking a whole of system or holistic approach can meet many goals simultaneously. It is a slightly updated version of the submission I made to the Environment Committee Meeting on 10/09/2020. I believe it is every bit as relevant now as it was then.

### **My submission**

I thank the Council for this opportunity to suggest how we can build the natural environment that we all want to live in.

I was present at the two workshops mentioned in Item 9 Paragraph 5 of the Agenda (Page 40) which “covered the annual plan, long-term plan and annual report process and the opportunities for involvement during these phases” and where “The gully groups sent a very clear message that they want to see a significant increase in funding and resourcing to support Hamilton City reaching 10% of indigenous vegetation cover”.

I said then that the \$100,000 allocated to the gully groups was not even sufficient to halt the rapid loss of biodiversity caused by invasive plants and weeds so we need to quickly develop a long term biodiversity programme as envisioned in the Local Indigenous Biodiversity Strategy (LIBS).

At the meeting on the Annual Plan I suggested to be really effective the Council should look at it as an opportunity to build a Waikato-wide environmental asset (just as the old quarry has now been transformed into Hamilton Gardens). Because I was submitting on four different topics I did not have time to speak to this at the time.

Covid-19 has already disrupted our previous ways of doing things. It is worth spending extra now to move to a fairer, more sustainable future. There is unlikely ever to be a cheaper time in our lifetime to borrow or a more effective time to change to better ways of operating.

By working with the community, other Waikato authorities and the government, the Council could create a regionally significant asset linking restored ecosystems and habitat within the city (both land and water) with restored habitat in the wider Waikato.

(A fundamental principle of ecology is that a large area with diverse interlinked ecosystems which interact positively with each other will support more species long term than an equivalent fragmented area. This is a great opportunity to reverse some of the fragmentation caused by previous heedless developments.)

Waterways need to be managed in a whole of catchment basis. It is futile to protect the wetlands in the gullies in the City if they get swept away with a wall of debris, mud and polluted water in the next downpour. This also applies to the different operations in the catchment. Development which reduces the permeable surface add to this problem. Some infill development results in 70% or more of impermeable surfaces. Inappropriate land use anywhere in the catchment affects the whole interaction of the ecosystem.

Enclosing waterways causes barriers to aquatic life preventing access to much of the catchment. Ill-advised engineering works in stream beds can cause the destruction of the habitat of native fish as does the annual clearance of stream side vegetation and removal of woody debris from stream beds. Inadequate storm water management results in pollution and sediment.



Taking a whole of system approach to ensure positive interactions of all operations over the whole of each catchment will result in benefits of all kinds. The whole is much greater than the sum of the parts. This is why it is necessary for the Council to work with the whole public: other local authorities, community groups, business, the Department of Conservation and the Government ..... to achieve the maximum benefits.

### **My proposal:**

The Council could combine assisting community groups, dealing with climate change, enhancing biodiversity and developing strong communities in the one project.

Doing this produces many win-wins:

- Restoring biodiversity
- Giving all Hamilton residents easy access to experiencing nature - with benefits to physical and mental health.
- Sequestering carbon to reduce climate change.
- Increasing resilience from extreme climate events and biodiversity/environmental shocks.
- Protecting against erosion and pollution of waterways.
- Providing paths for cycling and pedestrian access throughout the city and beyond for recreation, commuting and travelling.
- Providing opportunities for the education of people of all ages on all aspects of the natural world and its value.
- Involving the public in creating their part of the citywide asset and thereby taking ownership of it.
- Providing training, qualifications, careers and employment for some of the many people looking for meaningful work. Cooperate with the Government for this.

I challenge Council and staff to think of more benefits and more ways to advance the creation of a valuable asset for the whole Waikato.

There is an obvious synergy between the deferred Nature in the City programme, the “Natural areas fund to assist community group work” programme and the included Climate Change and sustainability programme. All could form part of the positive creation of an extended Waikato Province Environmental asset.

A transformed transport system would also form part of the future we all want to live in.

Let us restore the natural and social infrastructure as well as the physical.

The Council’s decisions will set the pattern for the future. We and our descendants are going to pay for our recovery anyway. Let us build the kind of future we all want to live in.

## Summary

You may say that we cannot afford to change. I say we cannot afford **not** to change now.

There will never be a better time than now. Our lifestyle has already been disrupted by the Covid19 pandemic – which has also demonstrated that money can be found for any purpose – it is just a matter of prioritising it.

You may have heard the saying “The best time to plant a tree is 40 years ago – the next best time is NOW.

Similarly the best time to change to a sustainable lifestyle that promotes wellbeing is 40 years ago – the next best time is NOW.

Do you want to be remembered as presiding over the decline of Hamilton as a desirable place for you and your children to live or for beginning Hamilton’s renewal and regeneration? The choice is yours.

Roderick Aldridge

## Hamilton CBD to Claudelands Rail Bridge Cycling and Pedestrian Pathway

K J Hodges, Hamilton Resident and Professional Engineer, 21<sup>st</sup> April 2021

**What is the Prime Objective?...** To remove cyclists and pedestrians entirely from the congested 'Claudelands Road Bridge', a new upper structure would be built above the 'Claudelands Rail Bridge', at road level, about 6m wide, providing a safe direct connection from central Victoria Street to River Road and Claudelands, accommodating commuting and special event people movement, forming the central backbone of a pedestrian and cycling pathway.



### What are the Positives?

- **Significantly cheaper** than a new bridge, only for pedestrians / cyclists, so is **lightweight cost effective construction**
- **Established bridge connectivity** on each side of the river, utilising **existing rail bridge structure**
- **Cultural values are maintained**, as it's not a new structure
- **Convenient central location** linking Claudelands directly to Victoria Street
- **Can readily be expanded** to utilise the rail corridor in future when rail line is undergrounded to the University
- **Removes pedestrian and cycle traffic** from Claudelands Bridge, with **Safe 6m wide** pathway, with no traffic
- Easier and safer access connection to River Road Carpark and Claudelands for commuters and events pedestrians
- Ideal for addition of a mid span **river viewing platform** looking northward
- **Does not detract from views** or other activities by using the existing rail bridge, plus covers over unsightly railway
- **Award winning potential** for utilising existing infrastructure in a novel and practical way to enhance the inner city

### What are the Negatives?

**APPENDIX 3 – Draft Long Term Plan Written Submissions**

**K J Hodges**

- Isn't a shiny new bridge to attract an international award for style and elegance, because it's just practical, at the lowest cost for a new Waikato River crossing, is suitable for purpose, representing great value for the community.

The concept can be further extended, undergrounding the rail line from Claudelands to the University, where cleared ground level space becomes a cycling/pedestrian corridor (approx 25m wide, with 6m path) with plantings and lighting, reducing cyclists on roads, providing a direct 'university to city' route. This eliminates rail noise for 500+ homes on the rail corridor, allowing further cycling/pedestrian connections to this central corridor. Increased rail use between Tauranga and Hamilton will result in increased noise, and traffic/cycling/pedestrian congestion. Undergrounding entirely eliminates this, particularly at the challenging Claudelands events centre and Peachgrove Road crossings.