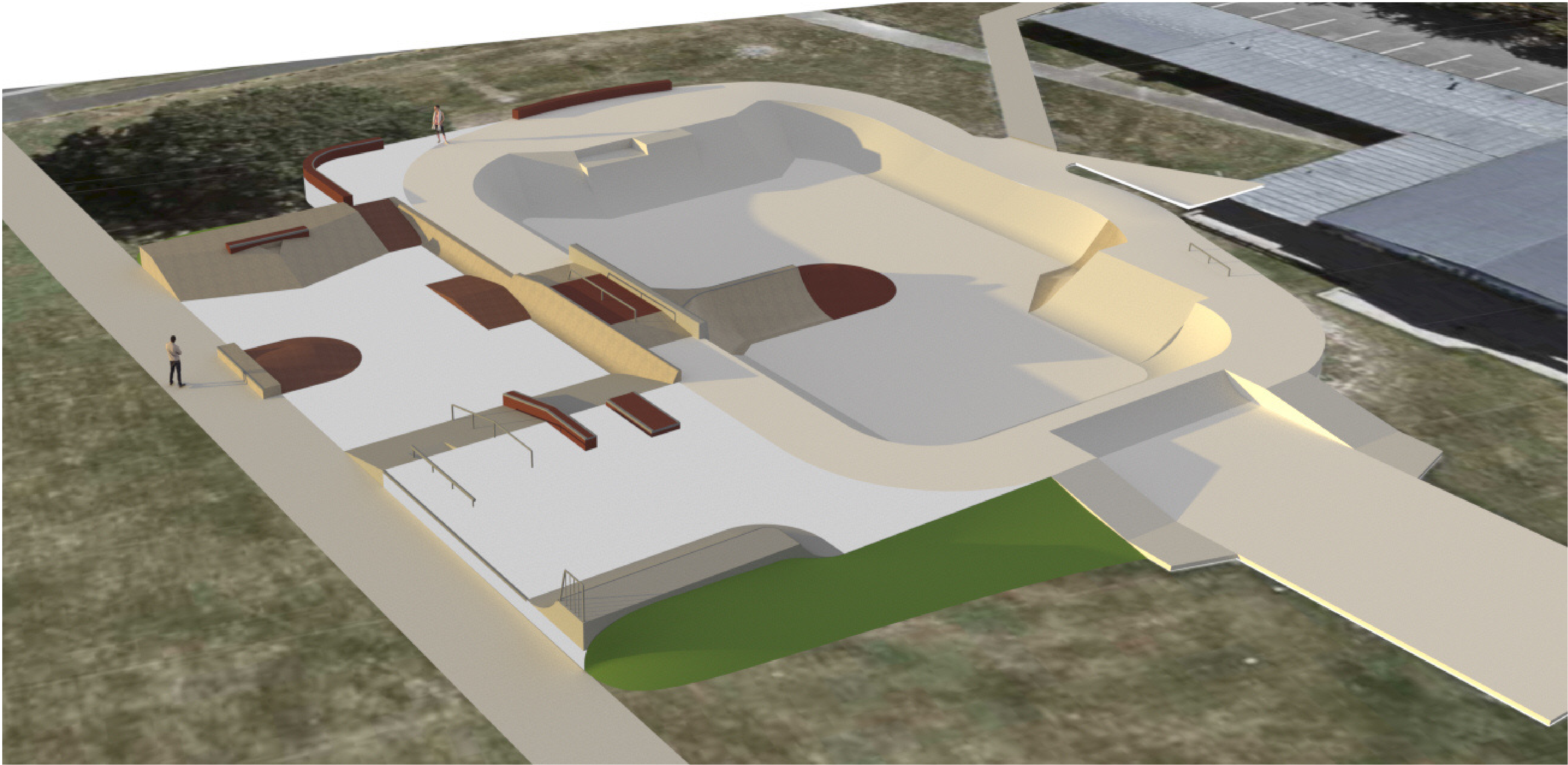


Fairfield Skatepark Concept



Artists Impression

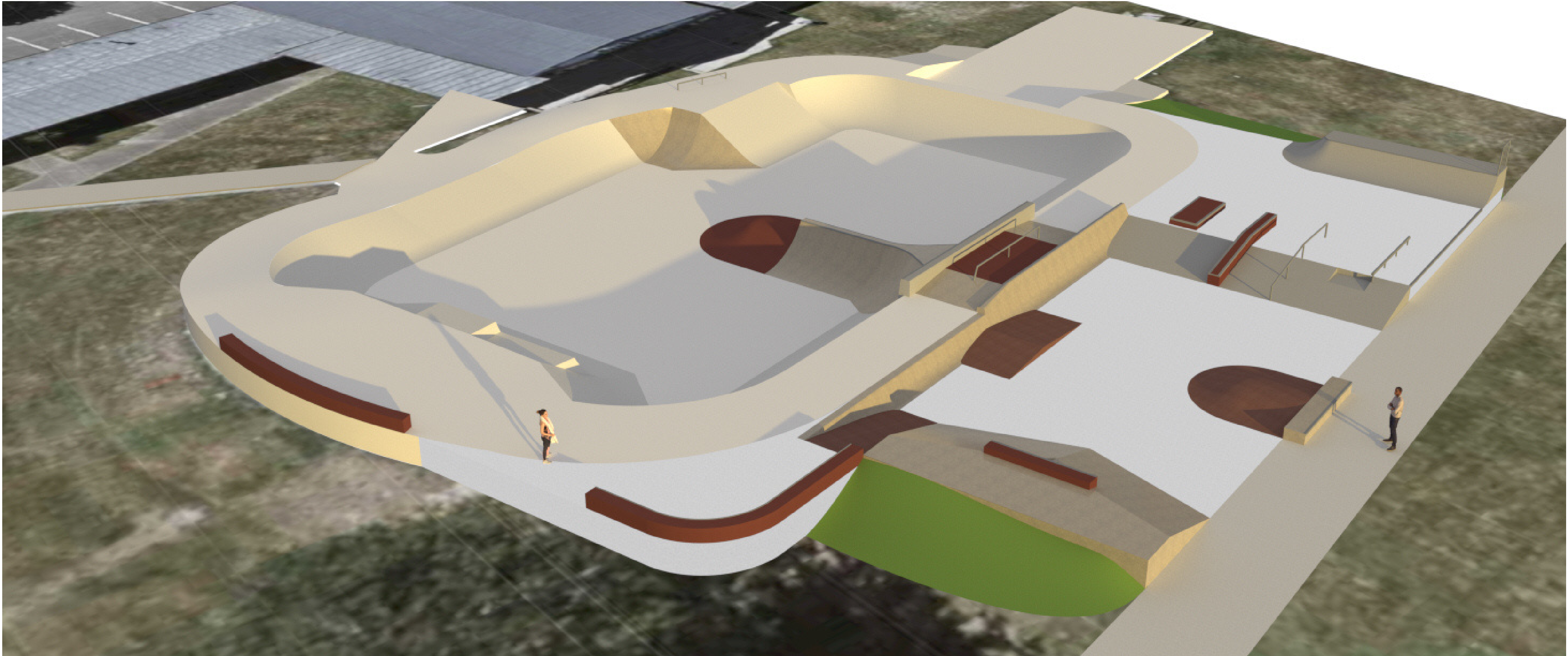
Fairfield Skatepark Concept Design

Acid NZ Ltd

18/11/2023



Fairfield Skatepark Concept



Artists Impression

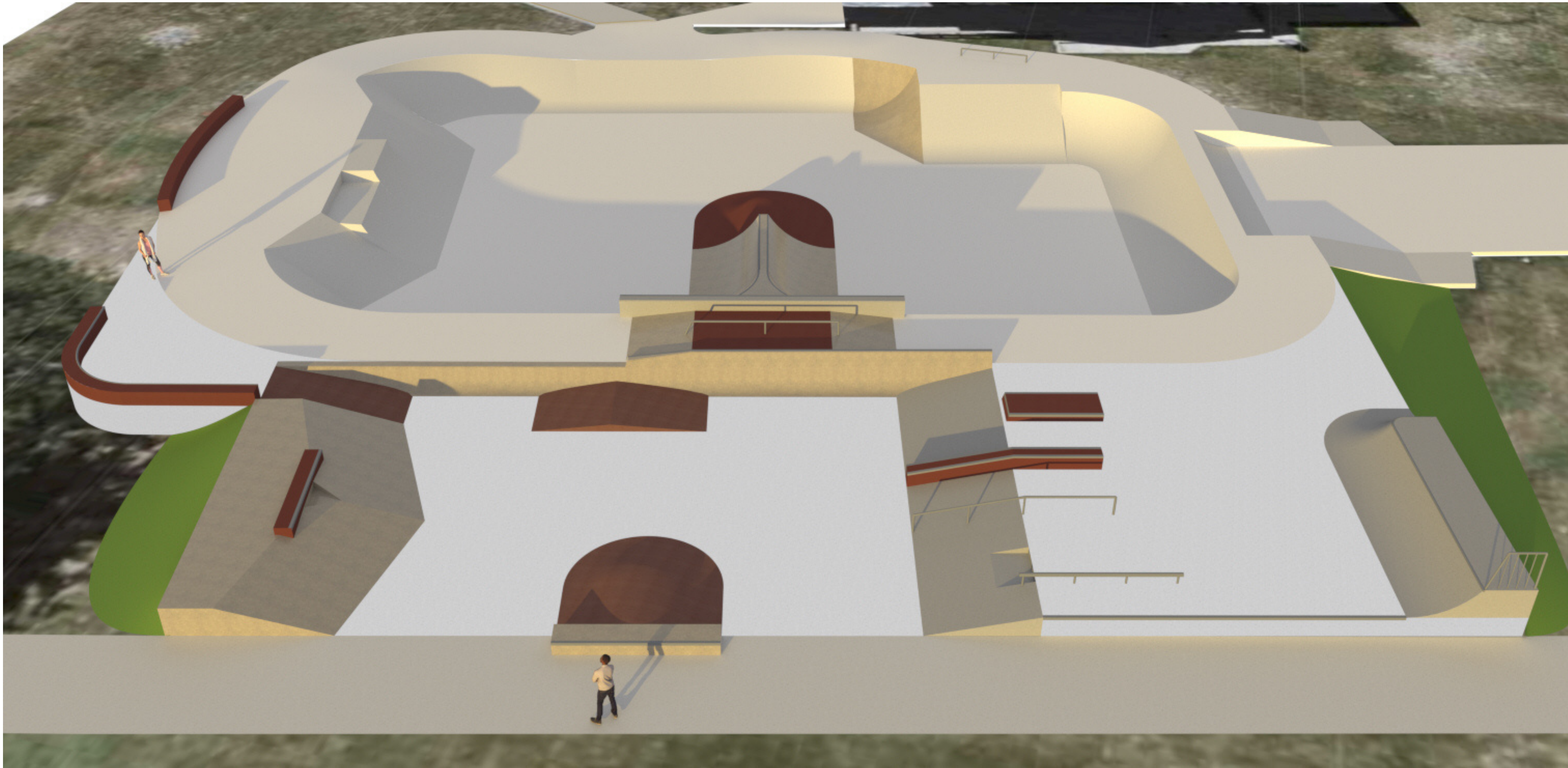
Fairfield Skatepark Concept Design

Acid NZ Ltd

18/11/2023



Fairfield Skatepark Concept



Artists Impression

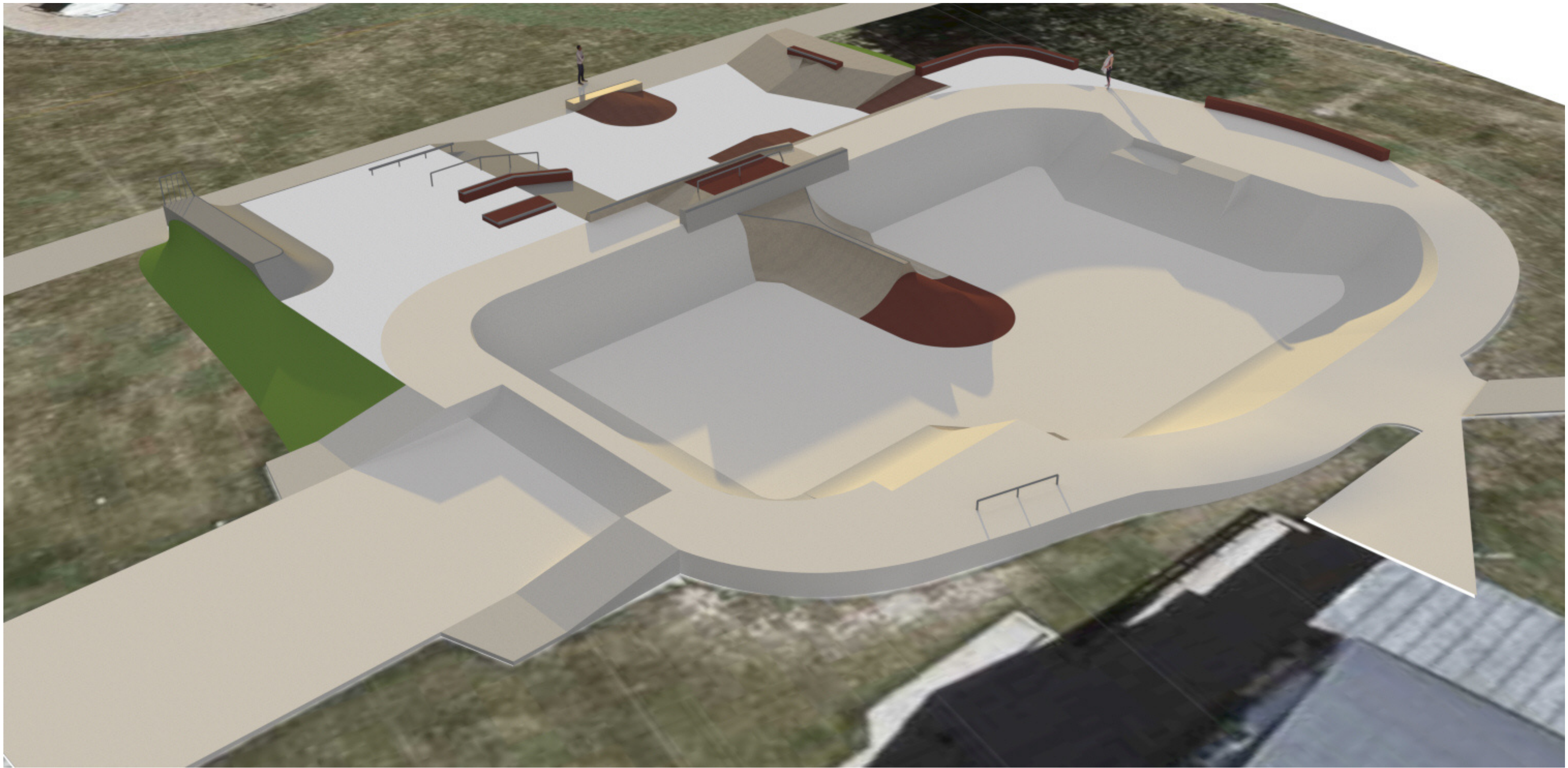
Fairfield Skatepark Concept Design

Acid NZ Ltd

18/11/2023



Fairfield Skatepark Concept



Artists Impression

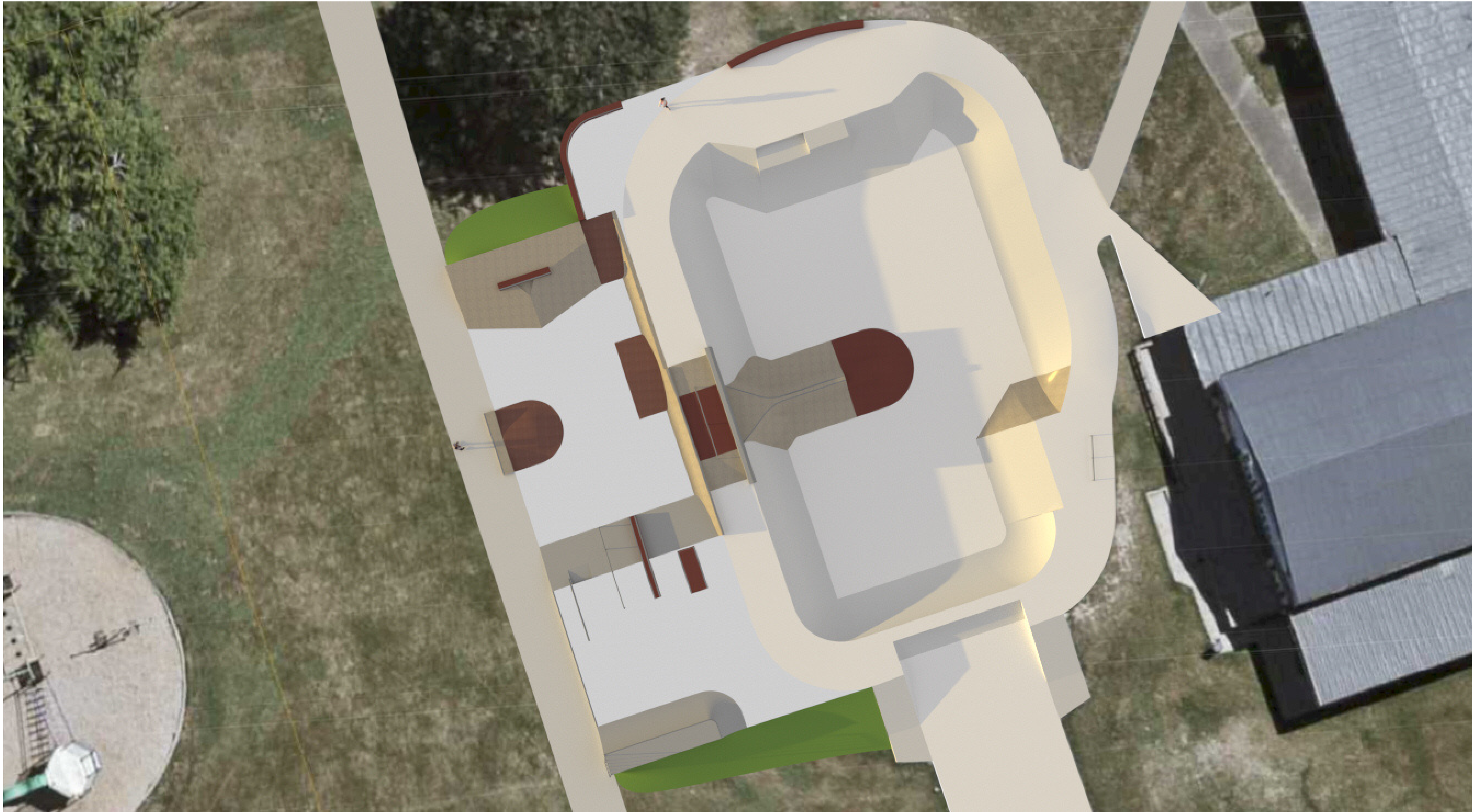
Fairfield Skatepark Concept Design

Acid NZ Ltd

18/11/2023



Fairfield Skatepark Concept



Artists Impression

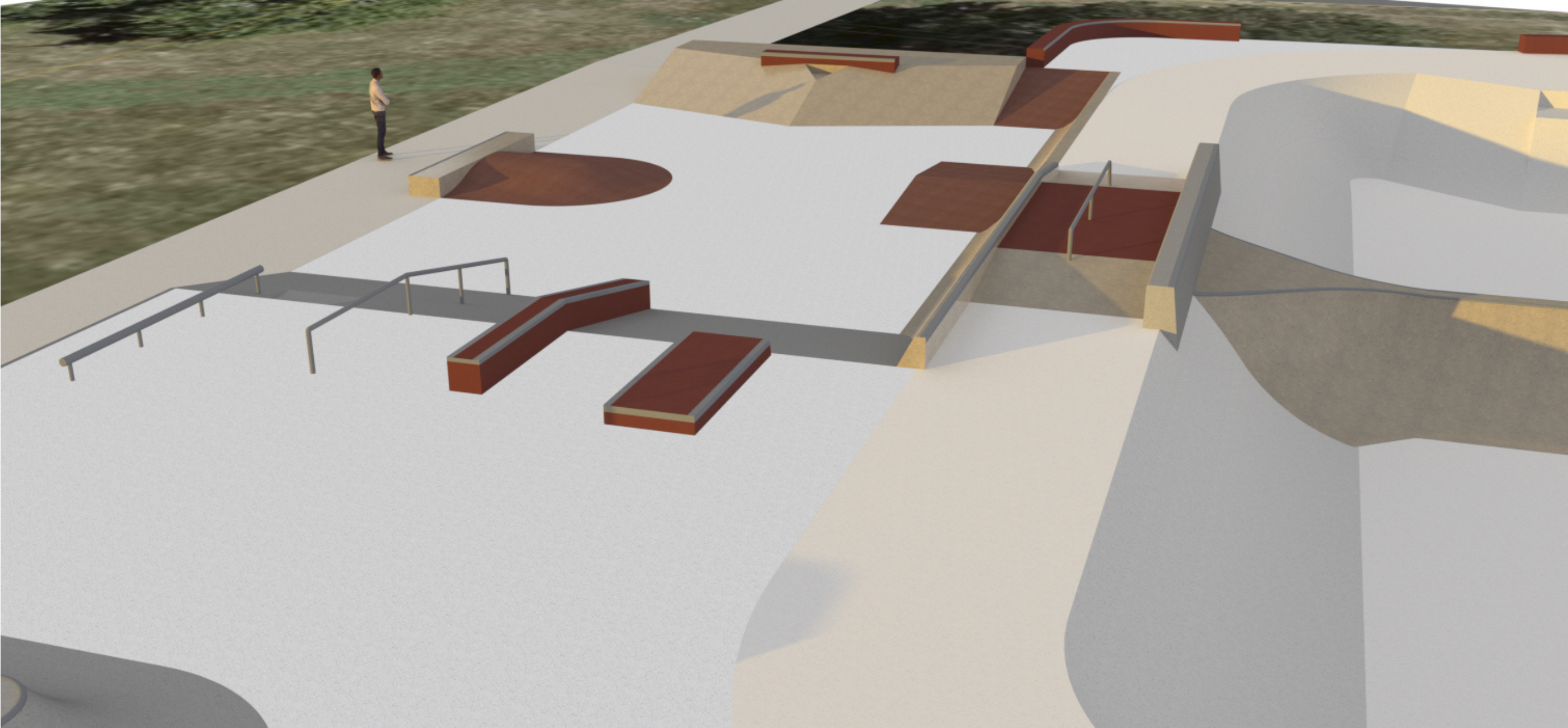
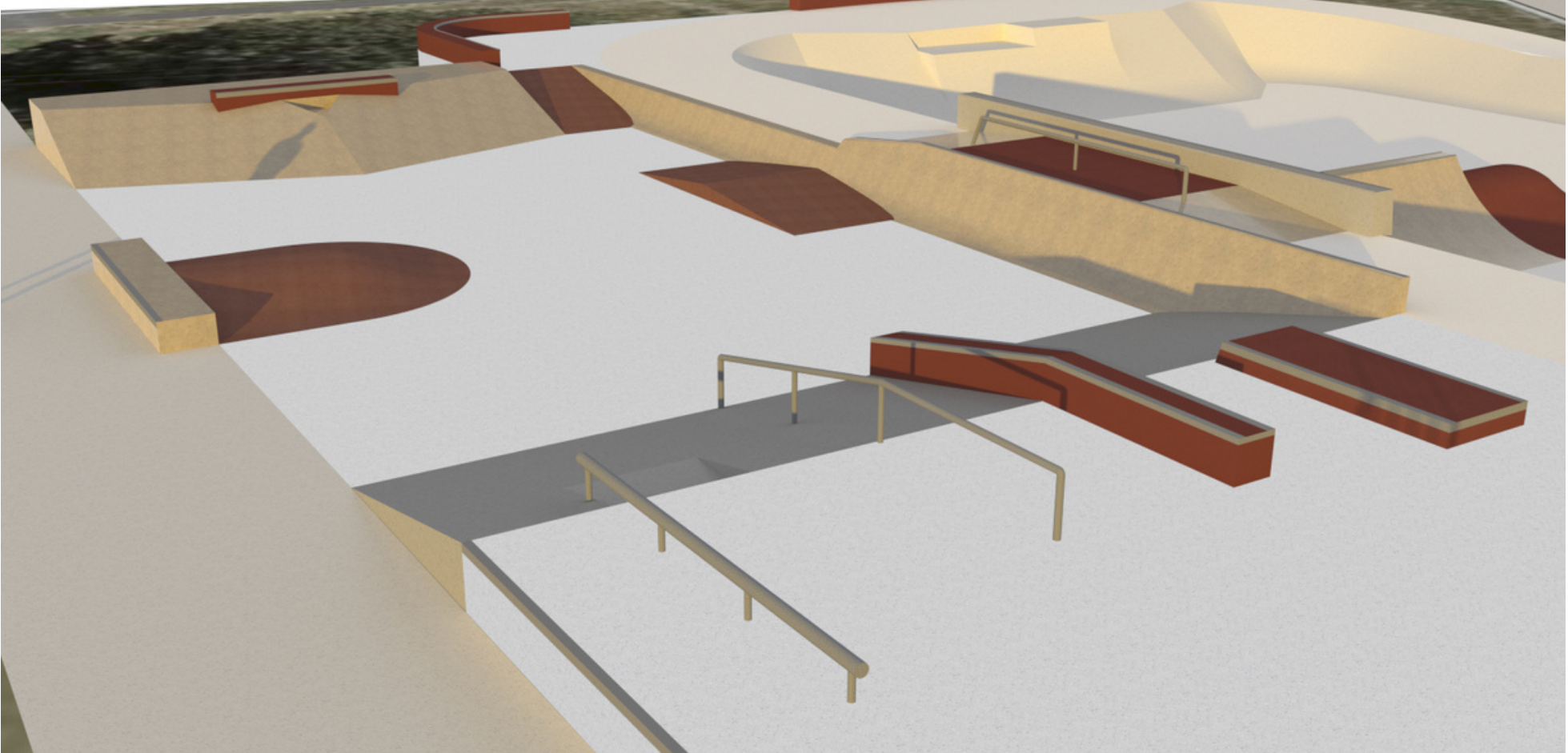
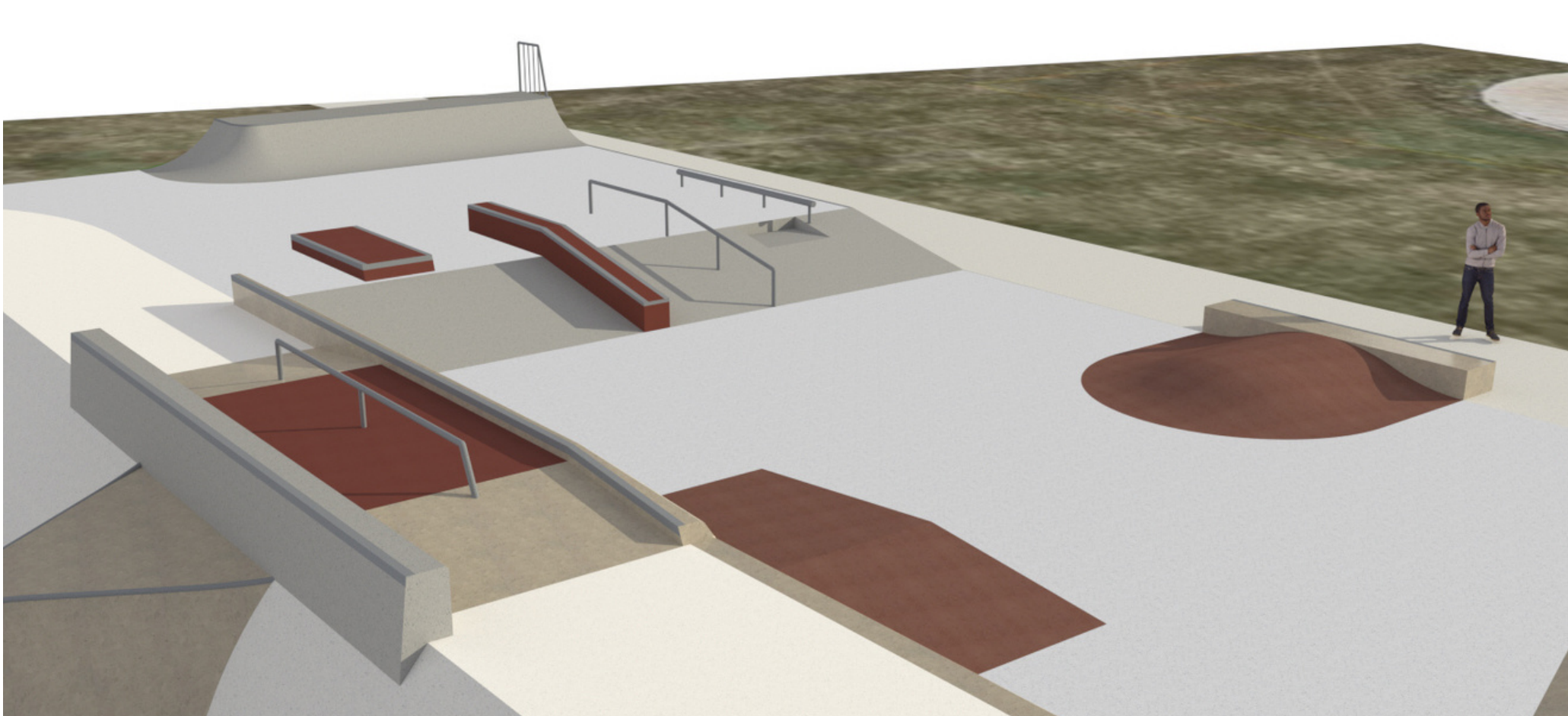
Fairfield Skatepark Concept Design

Acid NZ Ltd

18/11/2023

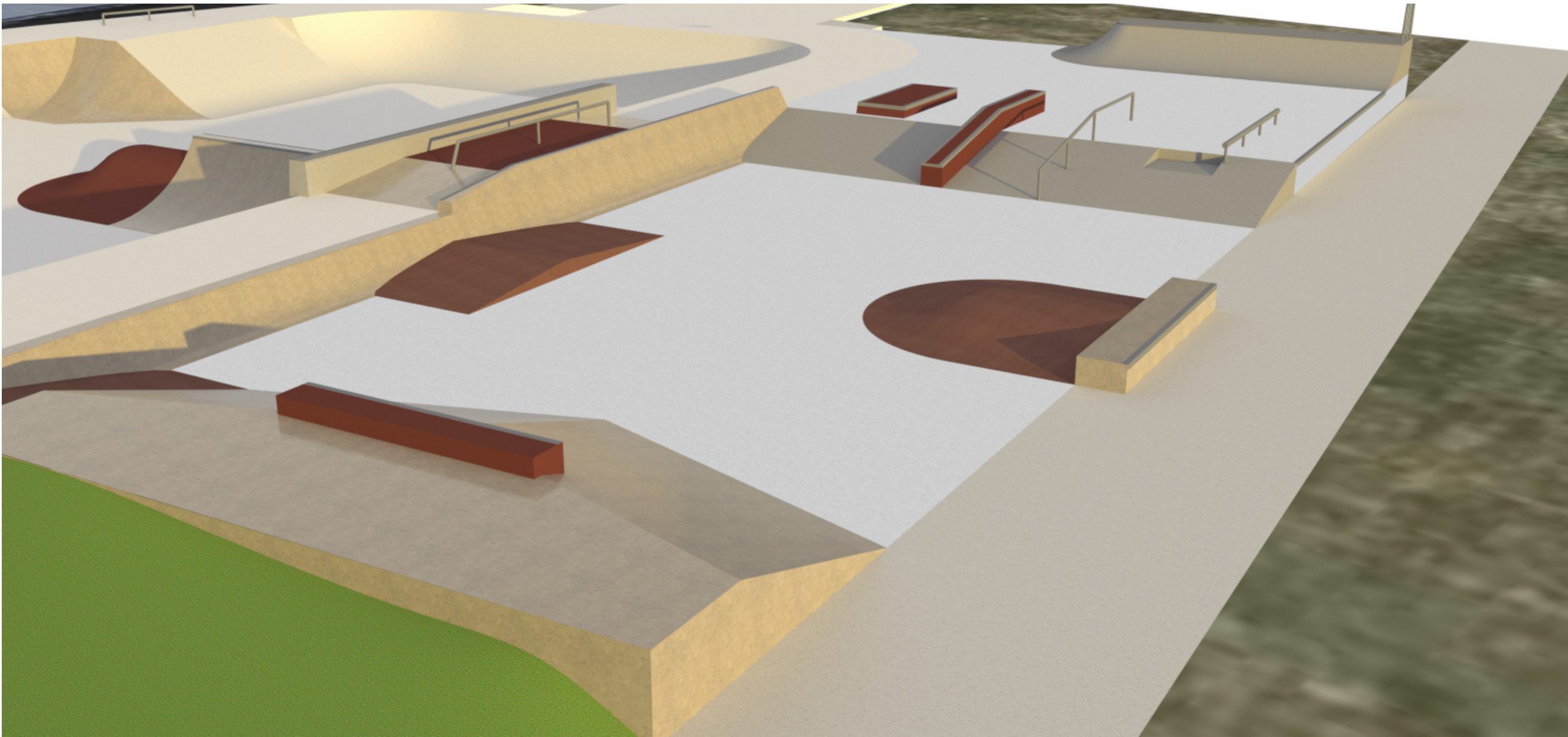
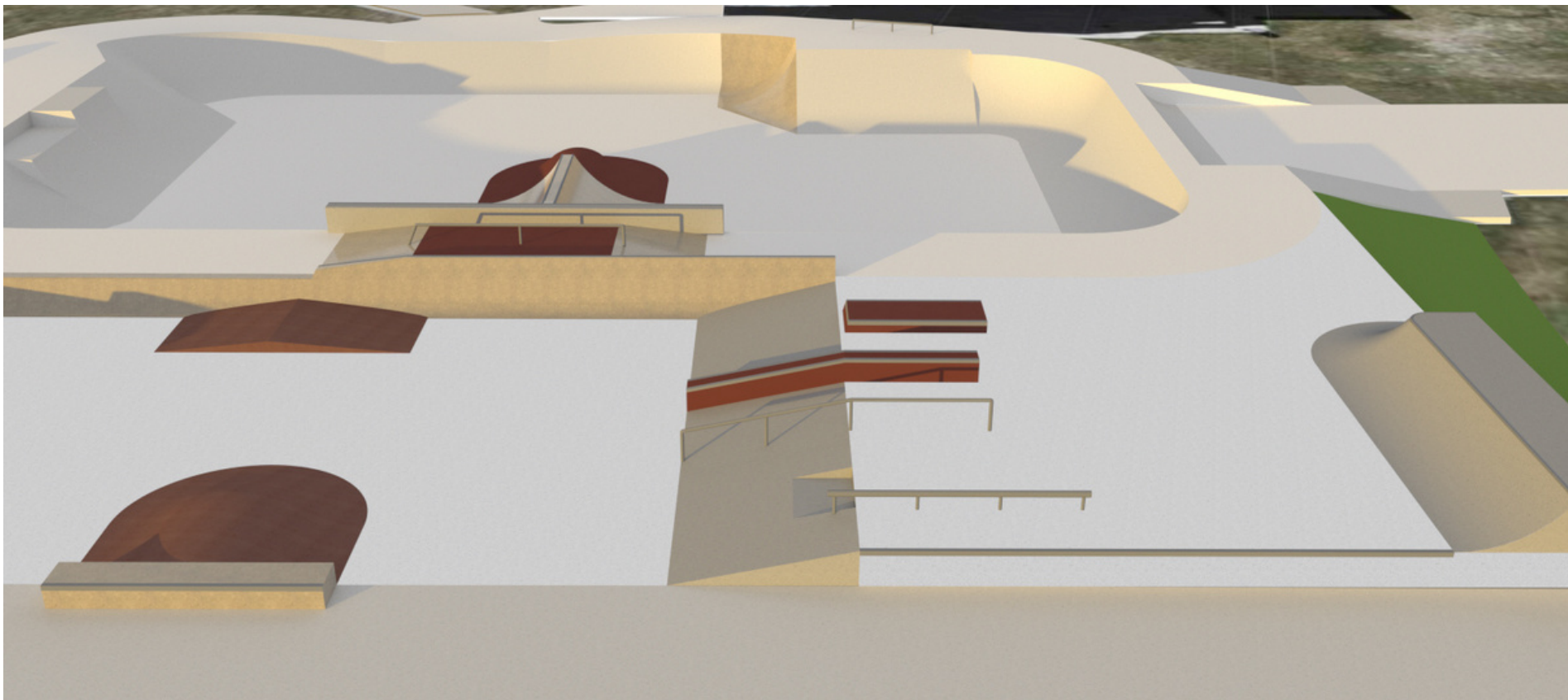
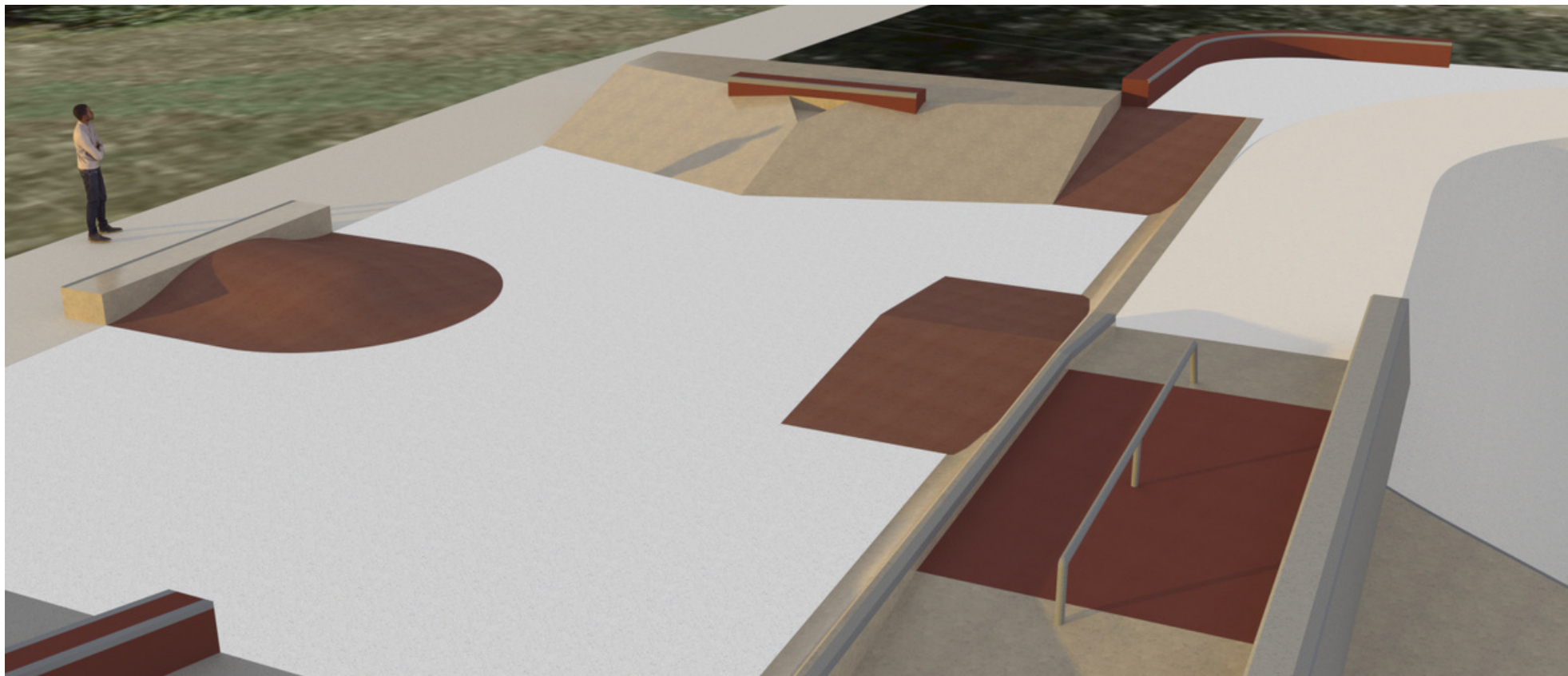


Fairfield Skatepark Concept



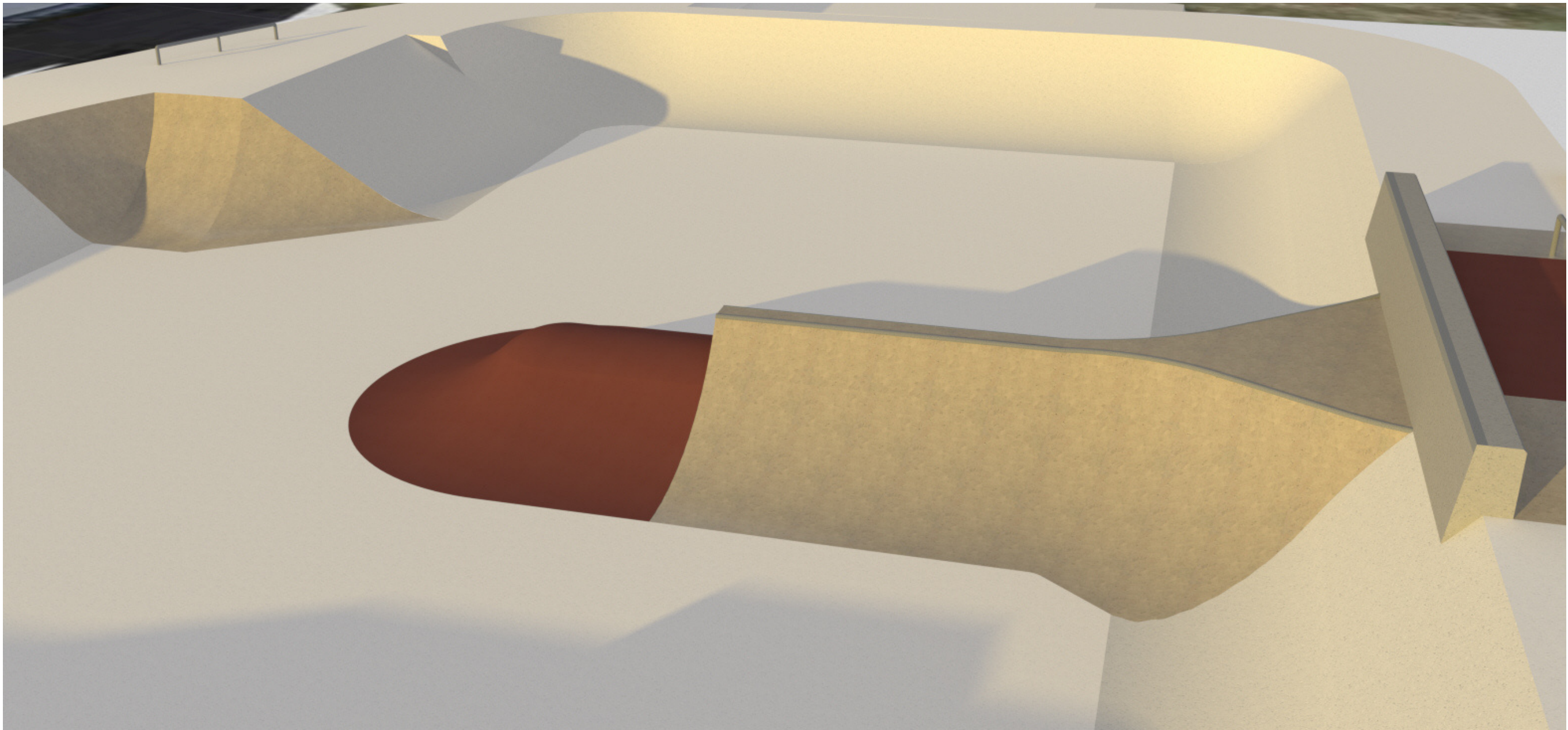
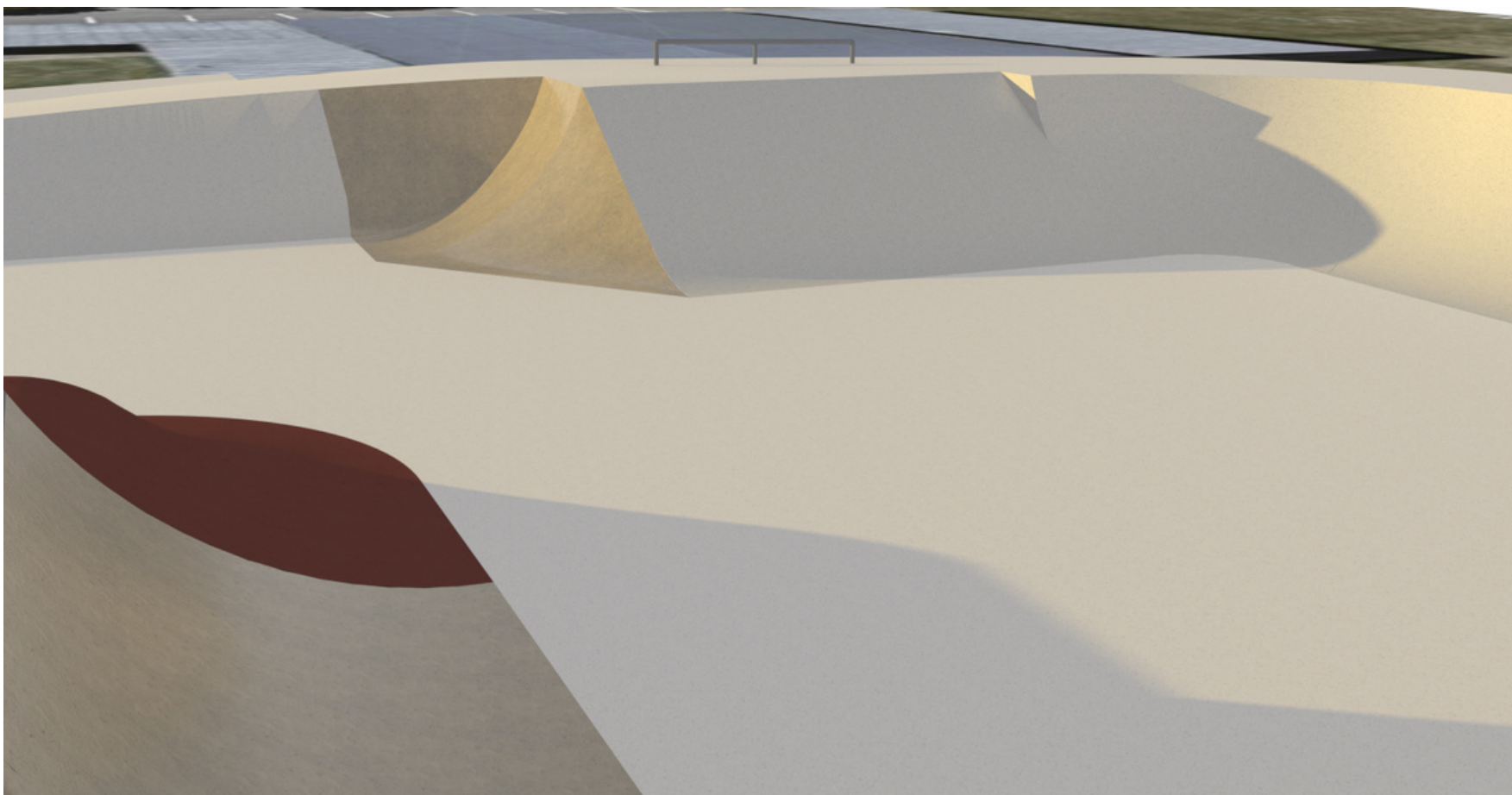
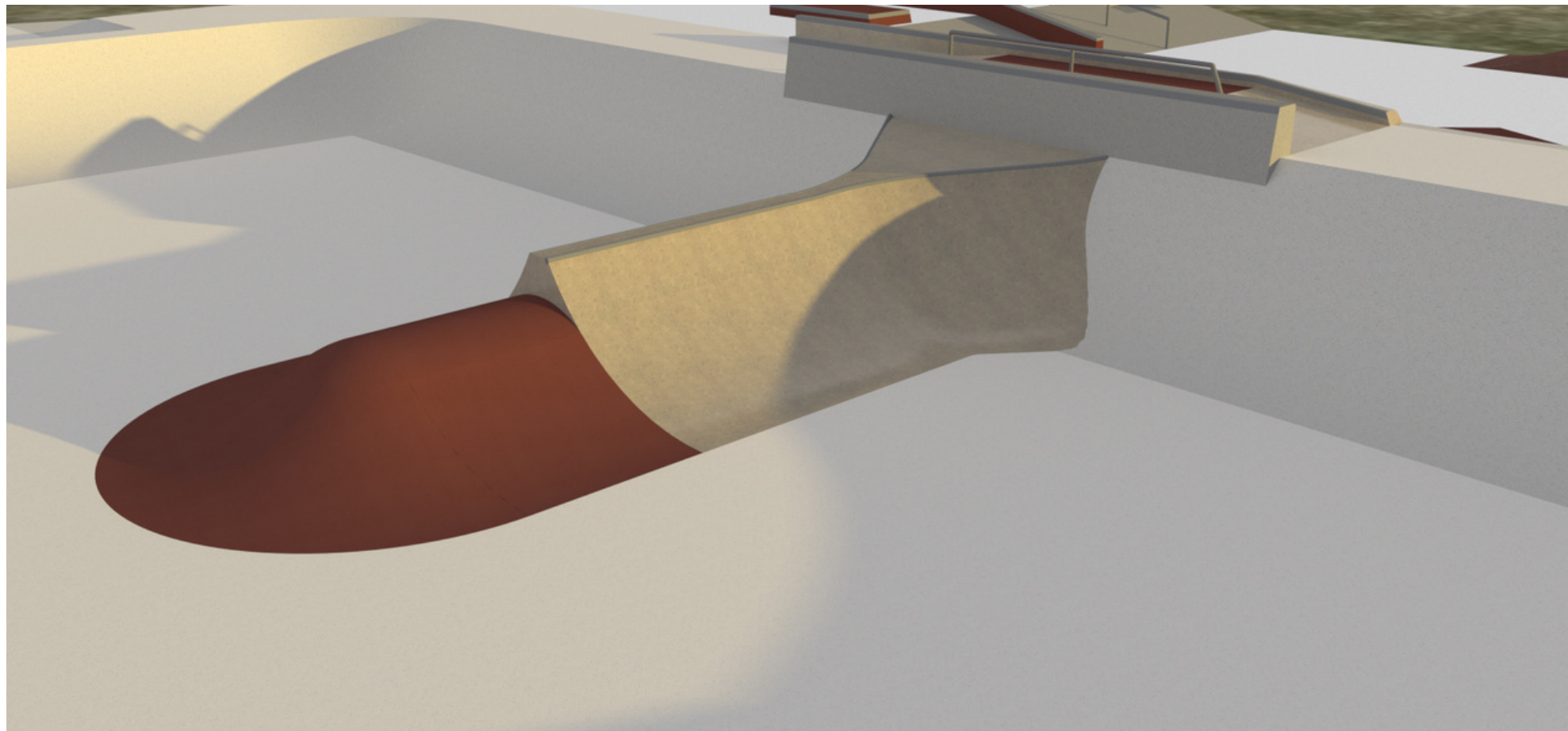
Artists Impression

Fairfield Skatepark Concept



Artists Impression

Fairfield Skatepark Concept



Artists Impression

Fairfield Skatepark Concept

Skatepark Labels

- A** 800mm High Hipped Quarter Pipe
- B** Bank to Manual Pad
- C** Flat and Down Ledge
- D** Flat and Down Rail
- E** Euro Gap and Fat Pipe Rail
- F** Pump Bump and Grindbox
- G** Wedge to Wedge
- H** Bank Feature
- I** Bank to Curved Ledge
- J** Bank Hip and Flat Ledge
- K** Funbox with Low Slappy Ledge and Rail
- L** 4.5 Ft Hip and Spine
- M** Roll Over Bump
- N** Hip Feature
- O** Flat Rail
- P** Curved Ledge

