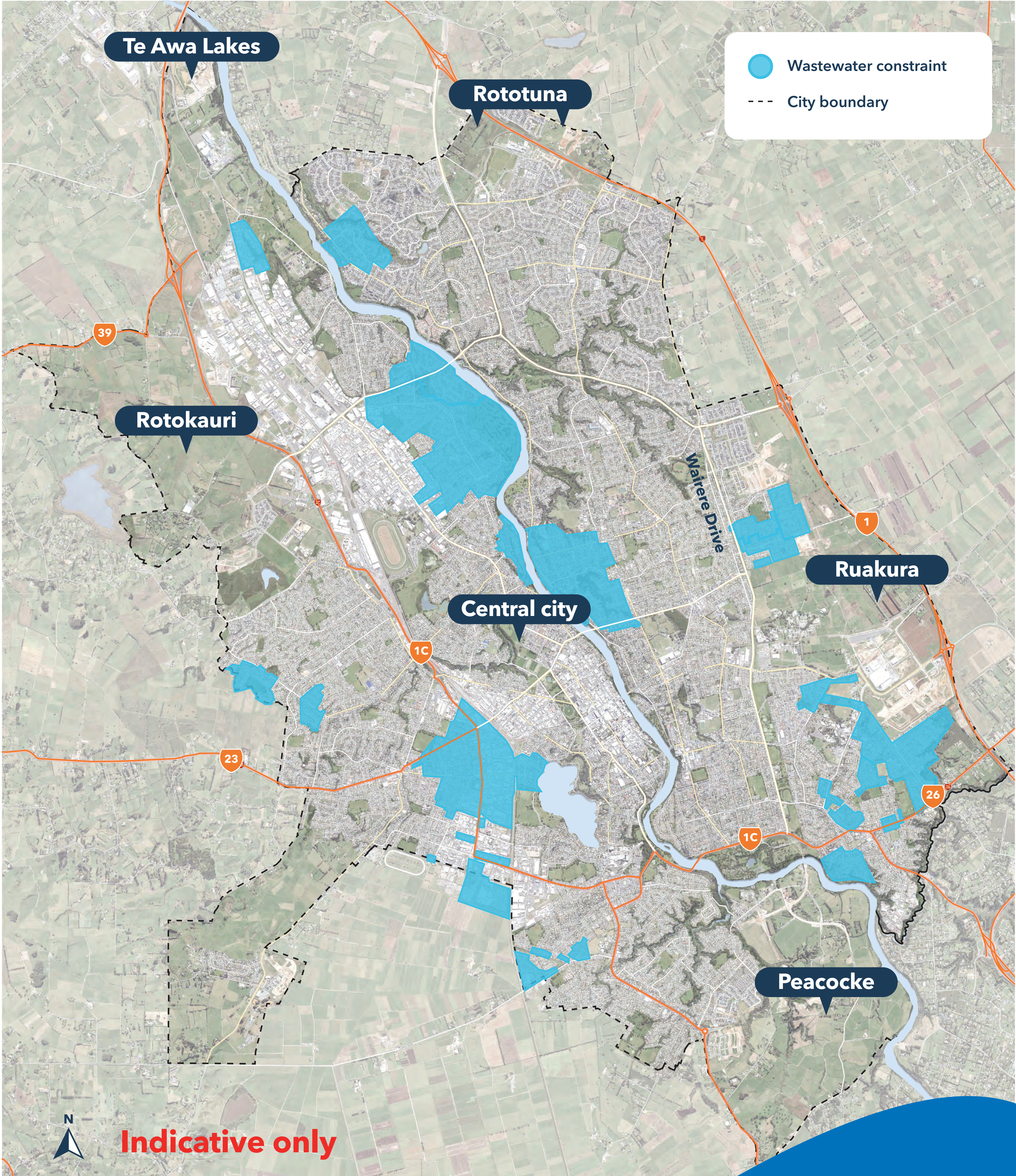


Wastewater network constraints in Hamilton after 2024-34 Long-Term Plan investments and proposed Waters CCO's investments

May 2025



Disclaimer: This map provides information on wastewater network hydraulic capacity only. Compliance with Regional Infrastructure Technical Specifications and associated design standards is not considered in the mapping. This map offers a broad overview of our wastewater network capacity and has been produced using best available information as at May 2025. Hamilton City Council will update this map regularly to reflect new information - including approved developments - and the evolving nature of network capacity. The map indicates areas which are affected by wastewater network constraints. Site specific testing for individual developments is encouraged. We encourage you to contact us early to assess the impact of your proposed development on wastewater network capacity. Wastewater network connection feasibility depends on the development's location, likely demand for our services, size, and timing. If a local network limitation is identified, you may need to upgrade the local network to develop. The residual constraint areas shown on the map are indicative only and are based on population projections used to determine Council's 2024-2034 Long-Term Plan upgrade programmes.



**Hamilton
City Council**
Te kaunihera o Kirikiriroa